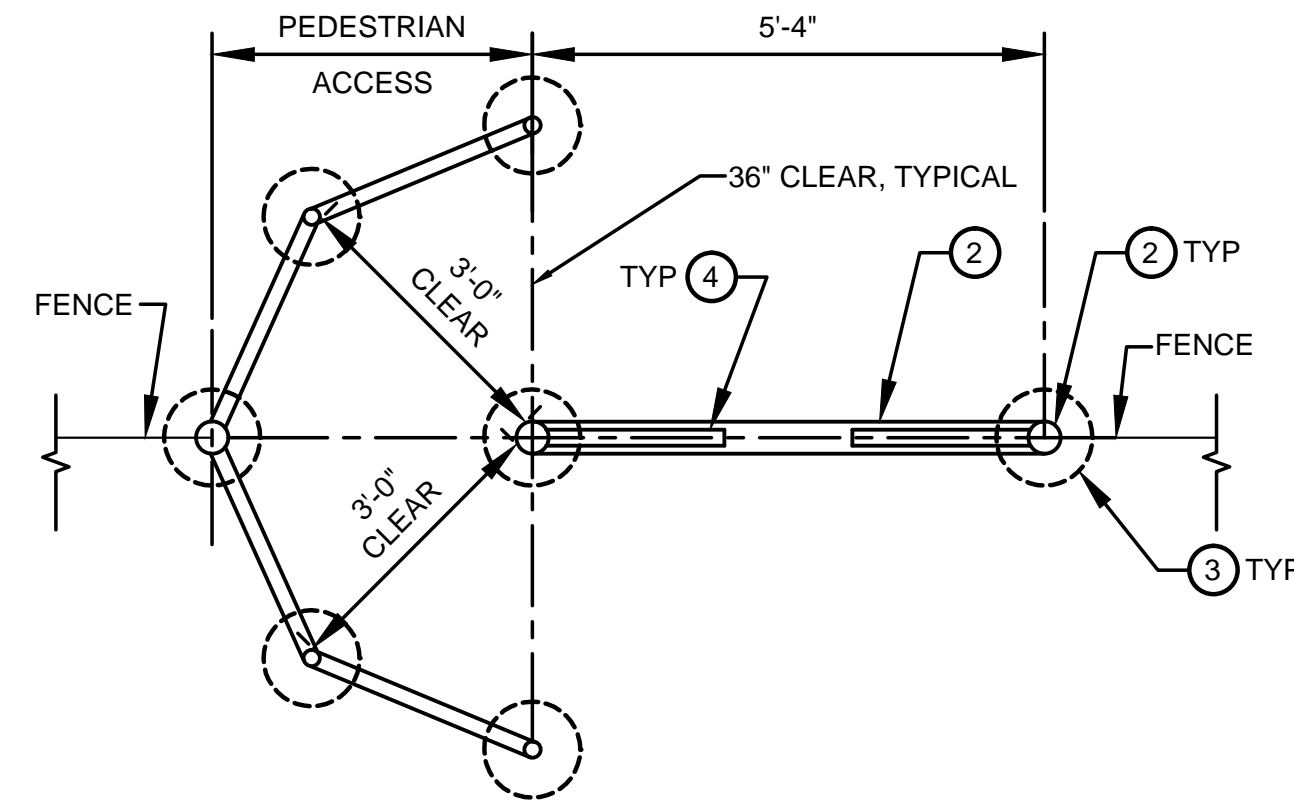


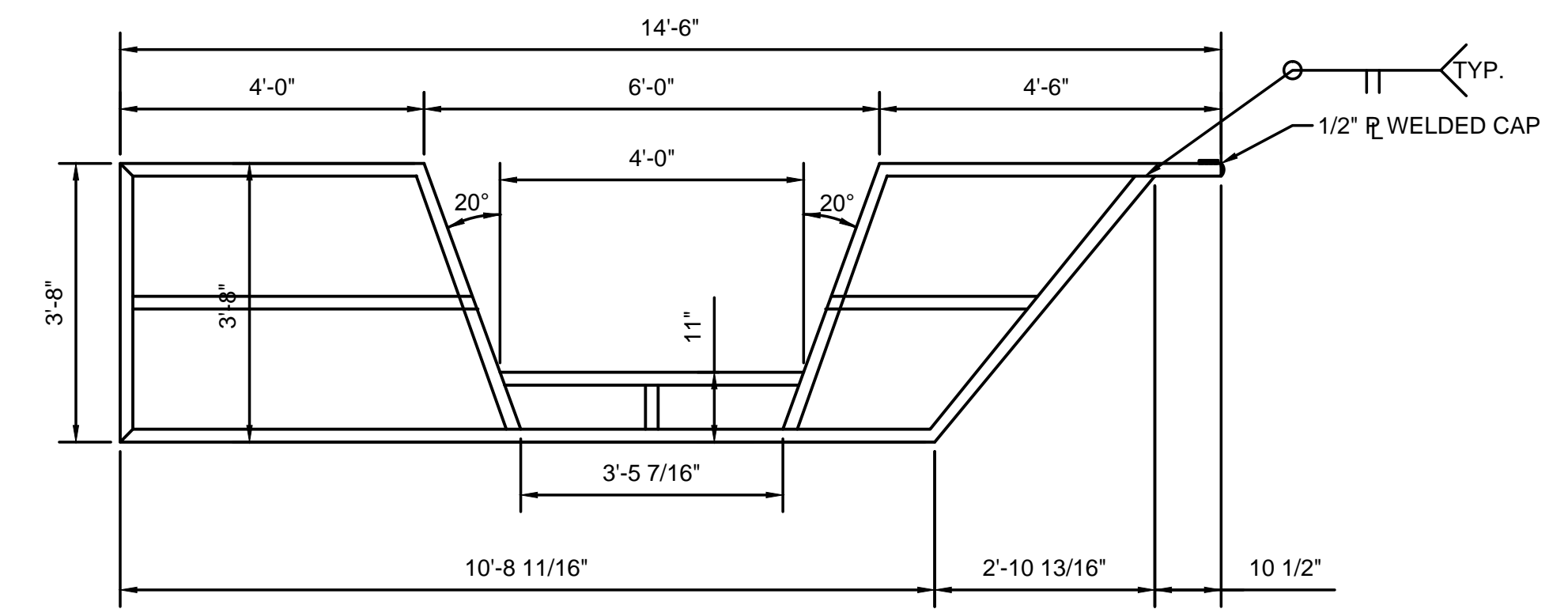
MODIFIED PEDESTRIAN ACCESS PLAN



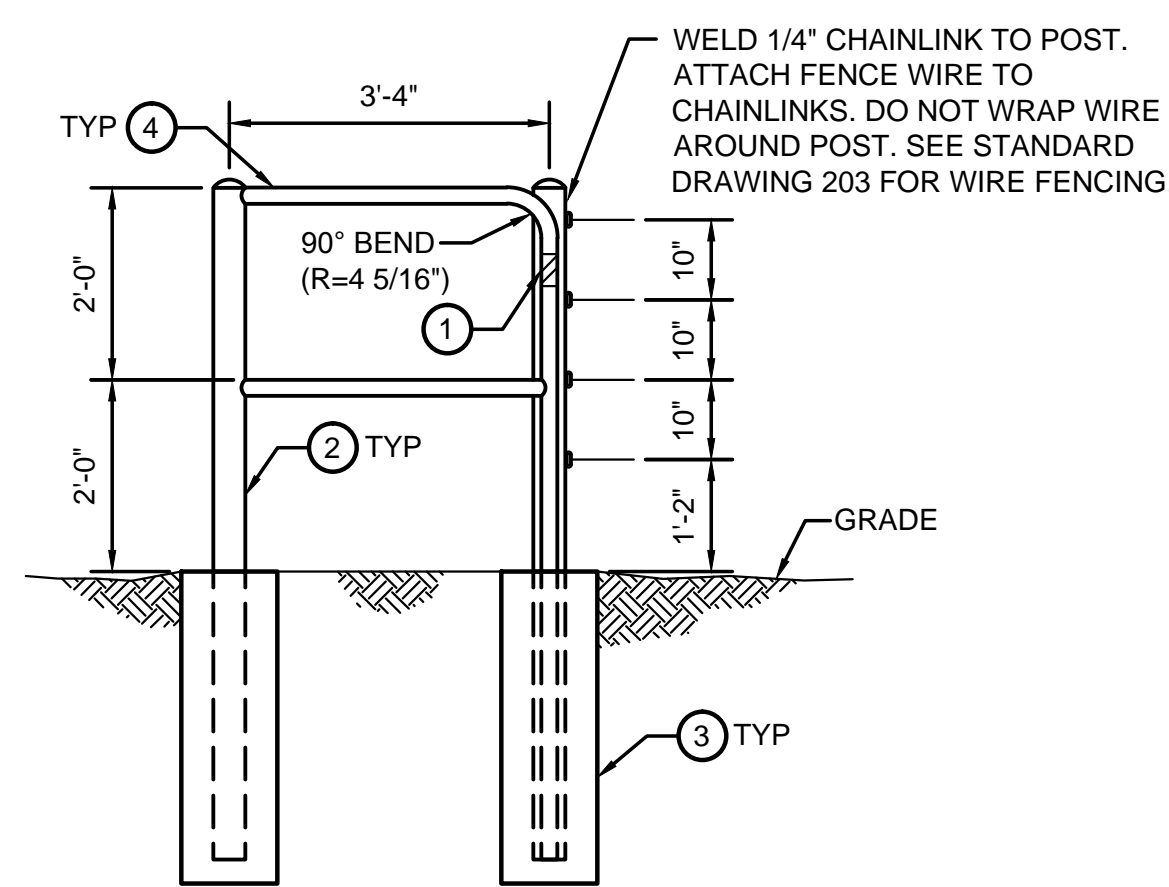
MODIFIED EQUESTRIAN ACCESS PLAN

**KEYED NOTES (AS APPLICABLE)**

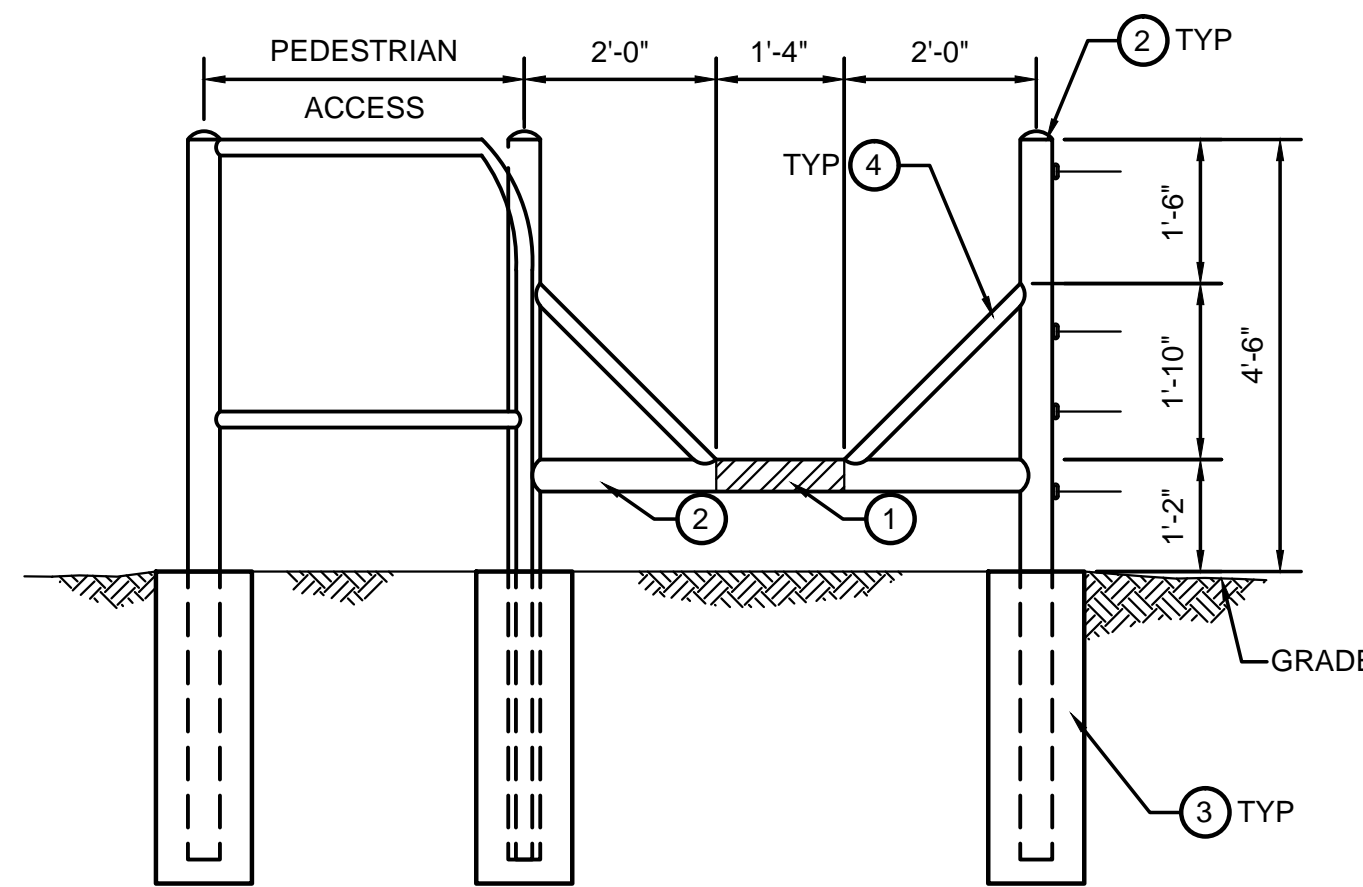
1. REFLECTIVE TAPE, AS APPROVED BY ENGINEER, LOCATE ALL AROUND PIPE AT LOCATIONS SHOWN.
2. 4" Ø SCH. 40 PIPE.
3. 12"Ø CONCRETE FOOTING.
4. 2" Ø SCH. 40 PIPE.
5. 5/8"Ø SOLID ROUND A-36 BAR.
6. HSS 2x2x1/8 TUBE FRAME.
7. 180° - 4" x 1 7/8" INDUSTRIAL HINGE (#IHP4180) BY AMERICAN FENCE COMPANY OR APPROVED EQUAL. WELDED TO POST.
8. 180° - 2 7/8" x 1 1/7" INDUSTRIAL HINGE (#IHP27180) BY AMERICAN FENCE COMPANY OR APPROVED EQUAL. WELDED TO GATE FRAME.
9. PLATE 1/4" x 2" x 2" CHAIN KEEPER W/ 1/2" WIDE x 1" DEEP NOTCH.
10. 3/8" x 24" LONG GALVANIZED CHAIN WELDED TO FRAME.
11. 1/4" x 12" LONG GALVANIZED CHAIN WELDED TO FRAME AND LOCK. LOCK SUPPLIED BY AMAFCA.



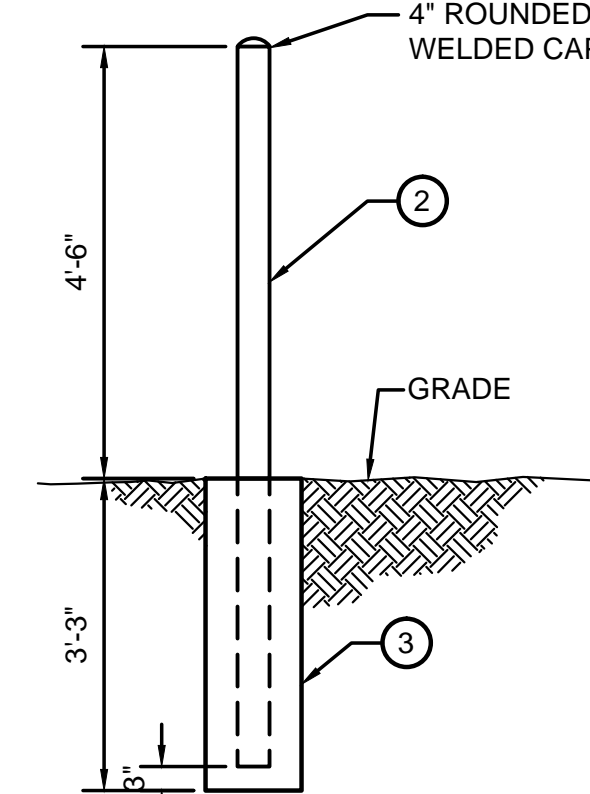
GATE PROFILE



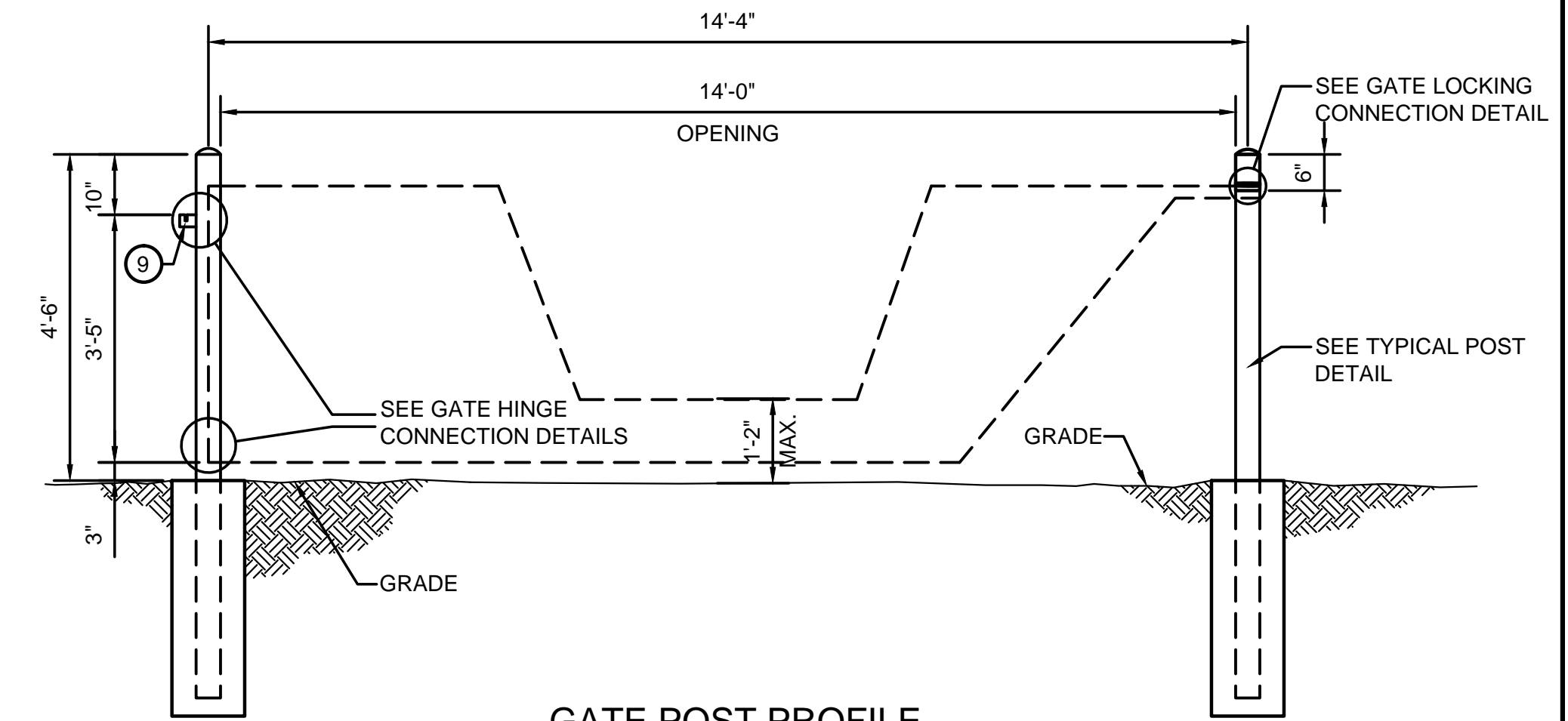
PEDESTRIAN ACCESS PROFILE



EQUESTRIAN ACCESS PROFILE

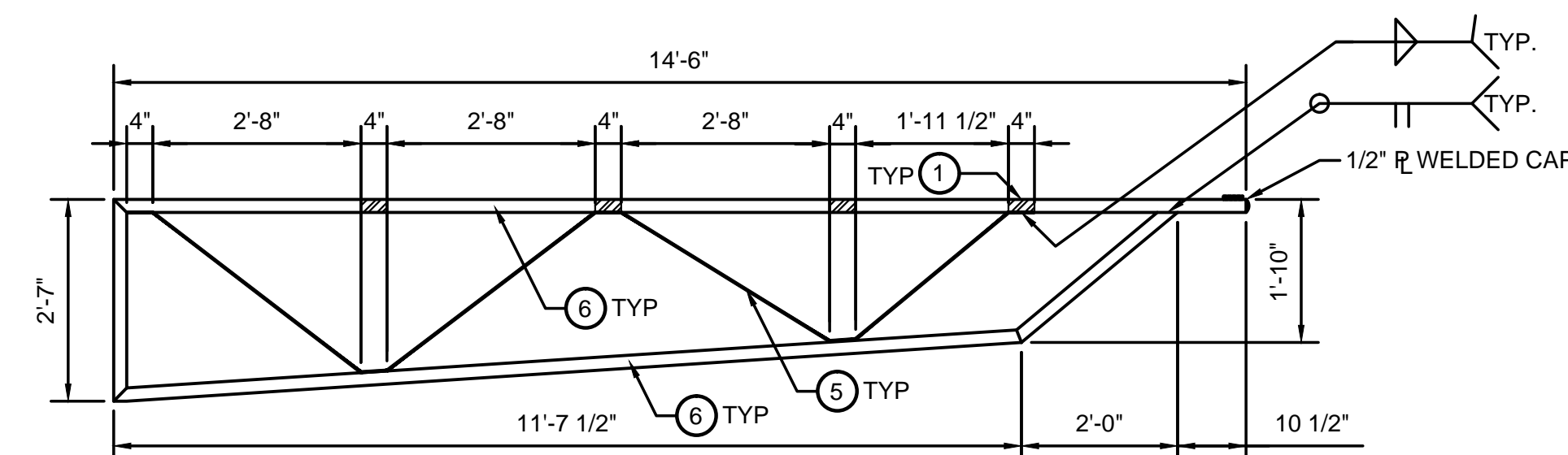


TYPICAL POST DETAIL

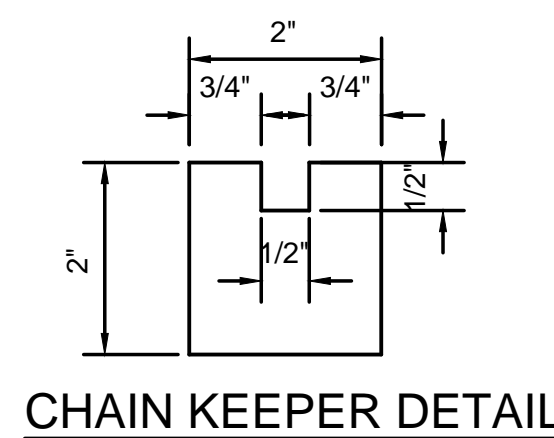


GATE POST PROFILE

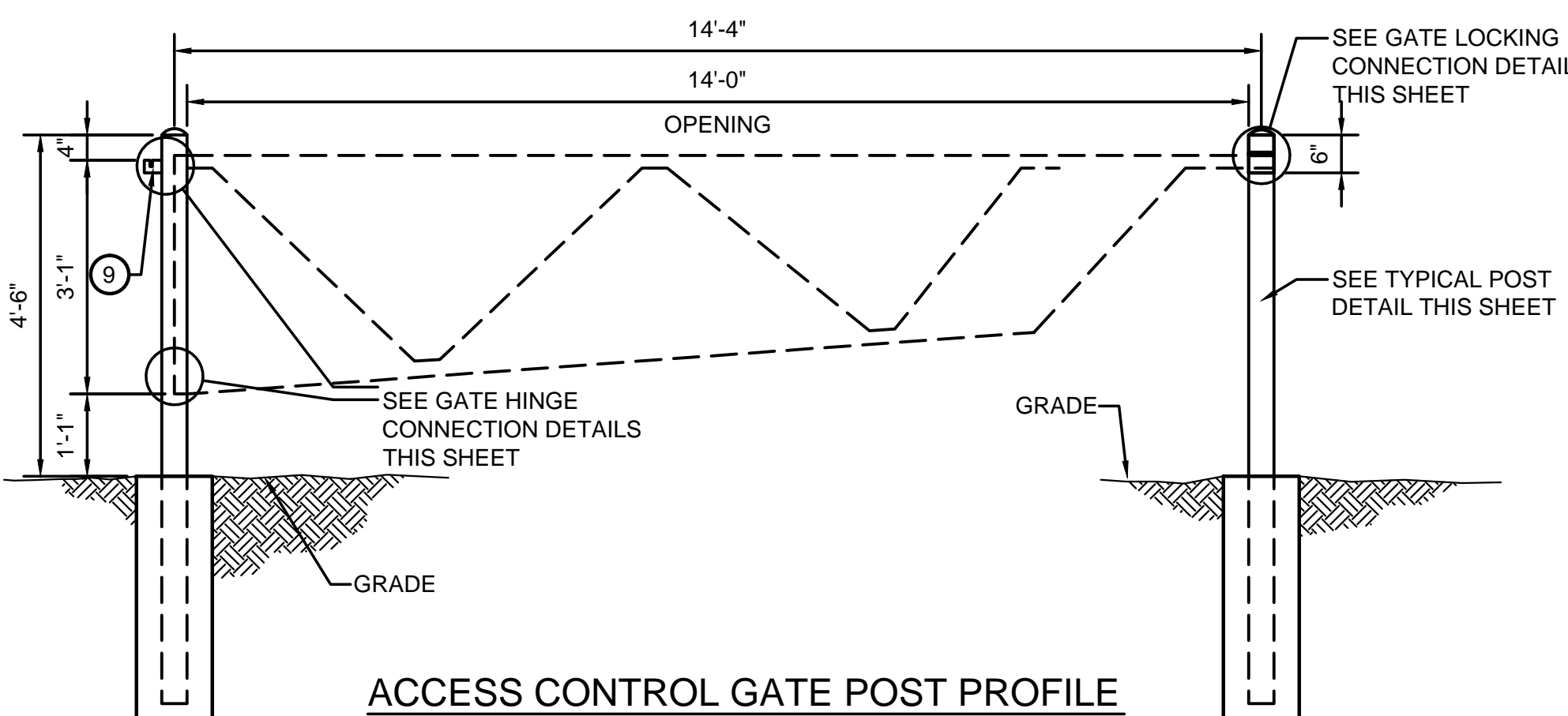
△ EQUESTRIAN MODIFIED ACCESS GATE



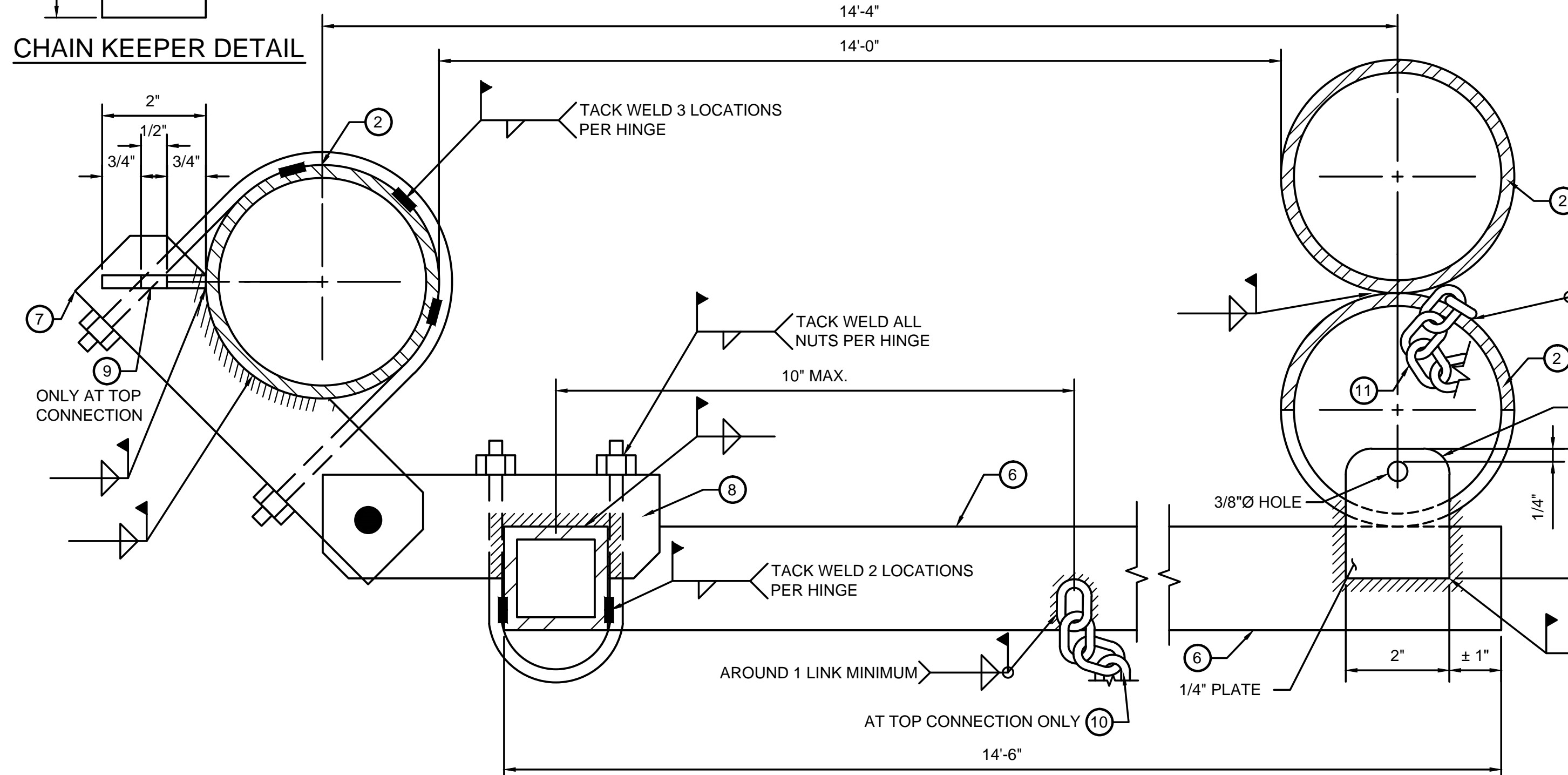
ACCESS CONTROL GATE PROFILE



CHAIN KEEPER DETAIL



ACCESS CONTROL GATE POST PROFILE

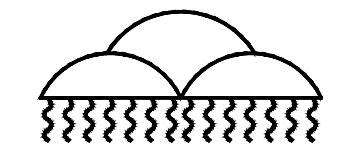


TOP AND BOTTOM GATE HINGE CONNECTIONS - PLAN

GATE LOCKING CONNECTION - PLAN

**GENERAL NOTES**

1. ALL PIPE SHALL BE SCHEDULE 40 STEEL PIPE AND CONFORM WITH ASTM A53 GRADE B. THE TOP RAIL SHALL BE CONTINUOUS, ALL HORIZONTAL RAILS SHALL BE SADDLE CUT, WELDED ALL AROUND AND GROUND BEFORE PAINTING.
2. ALL RAILS, PIPES, PLATES AND TUBING TO BE COLOR COATED. COLOR COATING SHALL BE DUNN-EDWARDS SYN-LUSTRO RUST PREVENTION ALKYD SEMI-GLOSS ENAMEL 9 SERIES OR PITTSBURG PAINT AND GLASS PITHANE ULTRA COATINGS OR APPROVED EQUAL. PRIOR TO COLOR COATING, RAIL IS TO BE PRIMED WITH 2 COATS OF PRIMER BY THE RESPECTIVE MANUFACTURER. COLOR TO BE PLANET TEAL.
3. NEW MATERIAL SHALL BE USED THROUGHOUT.
4. ALL WELDING OR GAS CUTTING SHALL BE IN ACCORDANCE WITH THE CURRENT STANDARDS OF THE AMERICAN WELDING SOCIETY D1.1-2000. ALL WELDING SHALL USE E70XX ELECTRODES.
5. GATE TO OPEN AWAY FROM STREET SIDE.



**ALBUQUERQUE METROPOLITAN  
ARROYO FLOOD CONTROL AUTHORITY**

**AMAFCA  
STANDARD DETAILS**

**GATE AND ACCESS  
SECTIONS AND DETAILS**

REV	DATE	DESCRIPTION	CHKD
1	4-7-16	ADDED MODIFIED EQUESTRIAN ACCESS GATE	LARKIN GRP

DRAWING NO.	202	MAP NO.	SHEET	OF
-------------	-----	---------	-------	----