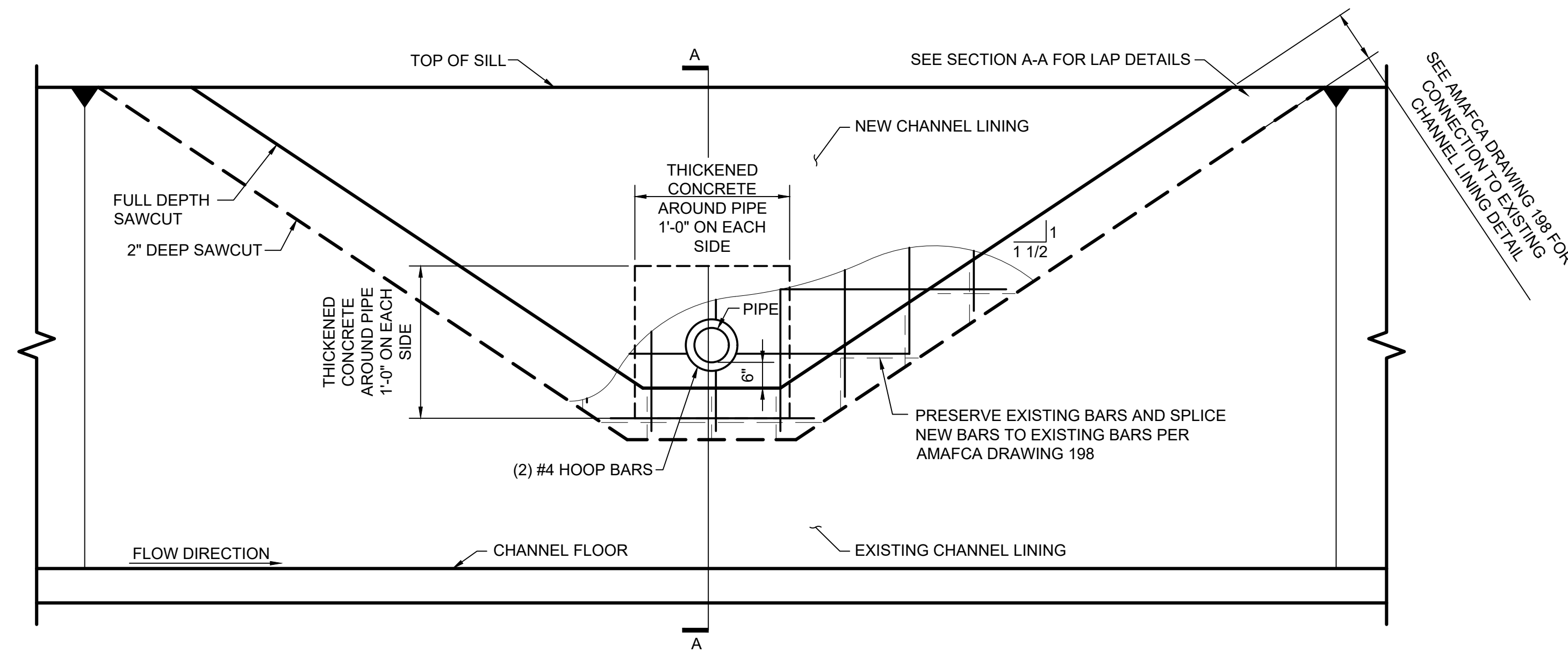


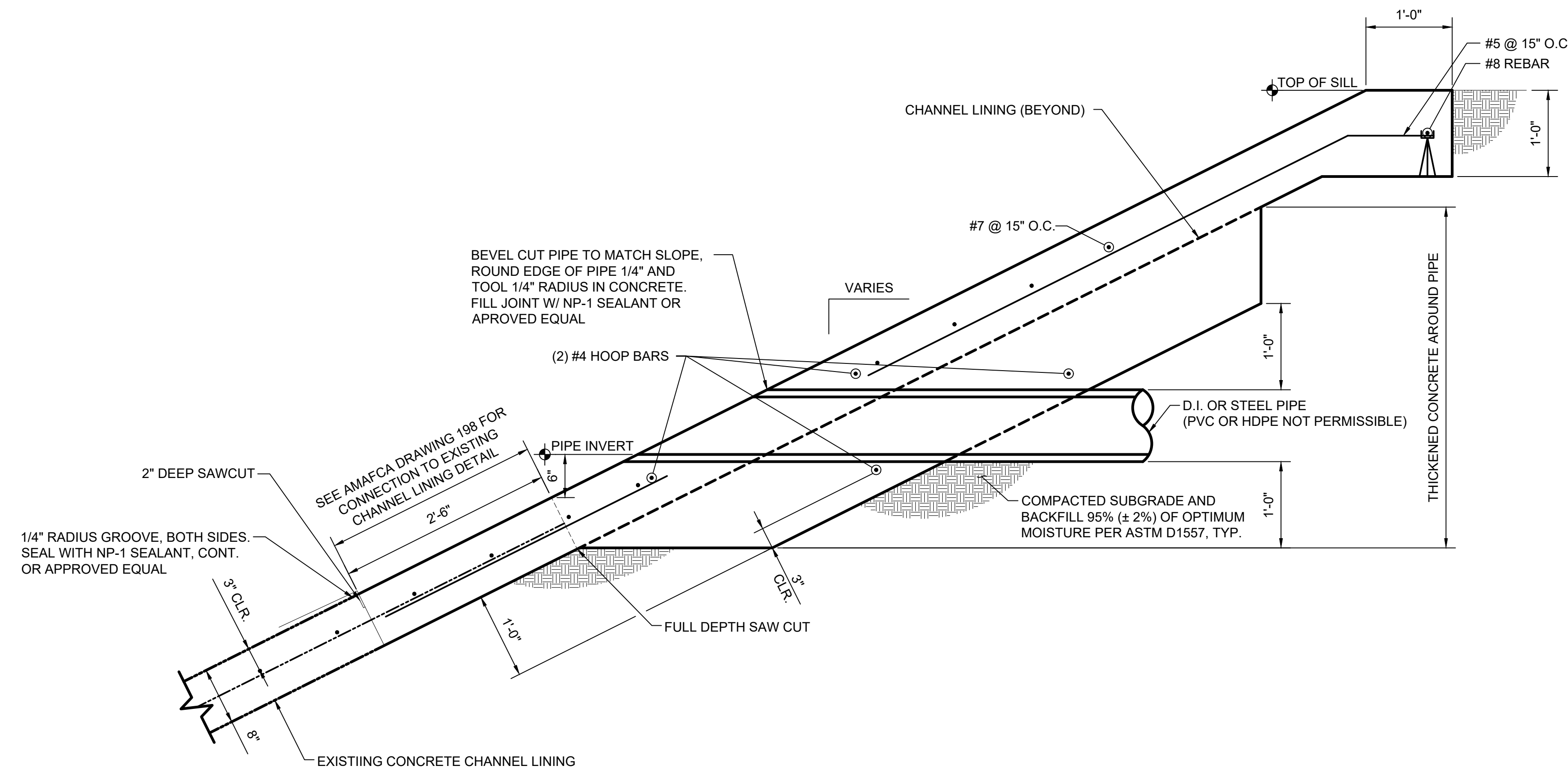
GENERAL NOTES

1. PIPE PENETRATIONS <12" MUST BE PERPENDICULAR TO CHANNEL LINING. PIPE PENETRATIONS AT A SKEW ARE NOT ALLOWED. IF PIPE PENETRATION REQUIRES A VALVE OR OTHER COMPONENT ON CHANNEL SIDE, A SEPARATE PIPE PENETRATION DESIGN IS REQUIRED.
2. INVERT OF PIPE PENETRATION MUST BE A MINIMUM OF 2'-0" FROM CHANNEL INVERT.
3. REINFORCING STEEL SHALL BE ASTM A615 GRADE 60. SEE DEPARTMENT OF TRANSPORTATION STANDARD SPECIFICATIONS FOR HIGHWAY AND BRIDGE CONSTRUCTION, SECTION 540 AS CURRENTLY MODIFIED AND ACCEPTED BY AMAFCA.
4. WHERE LAP SPLICES IN REINFORCING OCCUR, THE MINIMUM LAP SHALL BE MADE AS FOLLOWS UNLESS OTHERWISE NOTED:

BAR SIZE	LAP SPLICE LENGTH
#4	2'-0"
#5	2'-6"
#6	3'-0"
#7	3'-6"
#8	4'-6"



CHANNEL PENETRATION ELEVATION
NO SCALE



SECTION A-A
NO SCALE

ALBUQUERQUE METROPOLITAN ARROYO FLOOD CONTROL AUTHORITY

<12" DIAMETER PIPE PENETRATION INTO CHANNEL

ISSUE DATE: MARCH 2026

DRAWING NO. 106

SHEET 1 OF 1