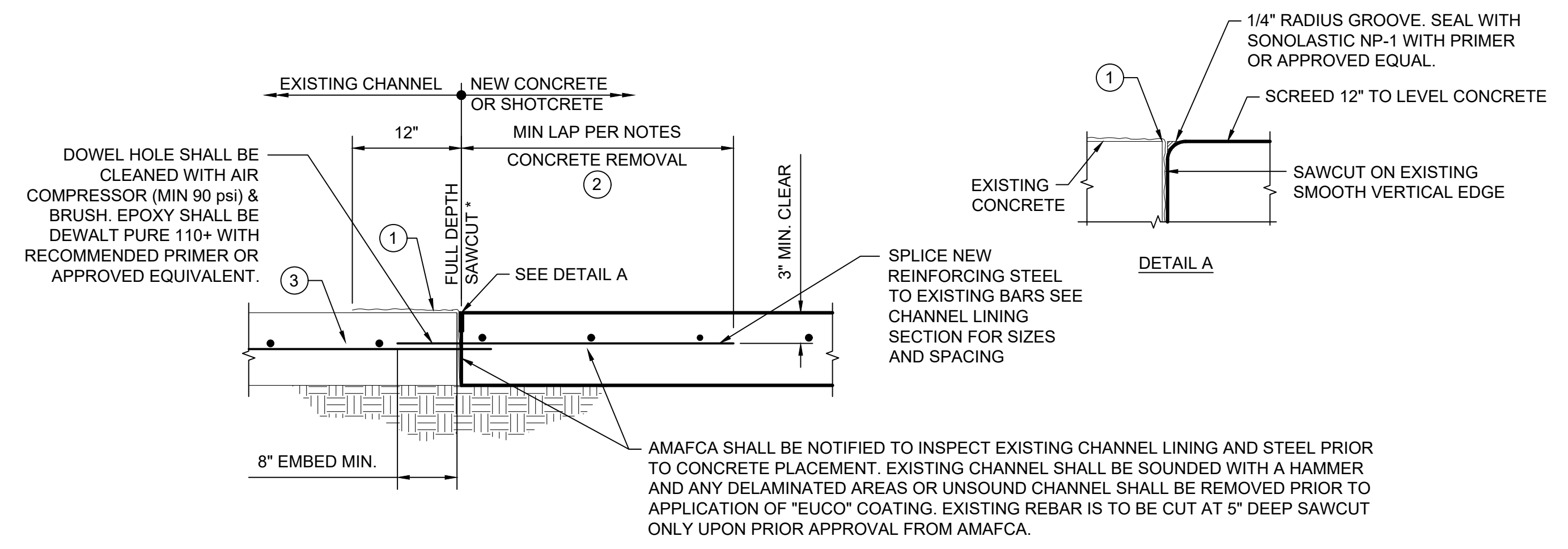
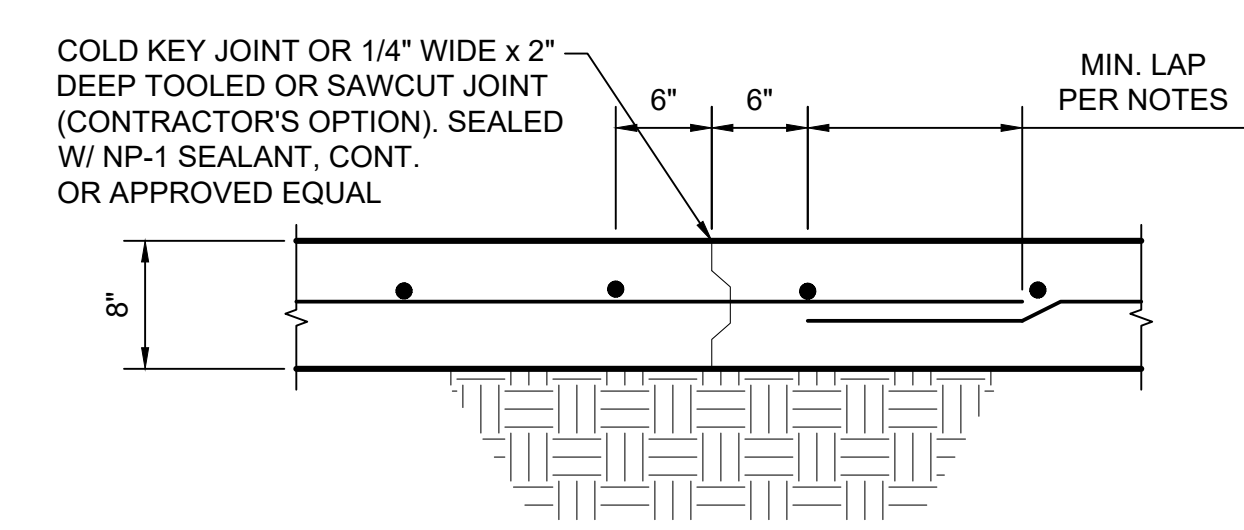


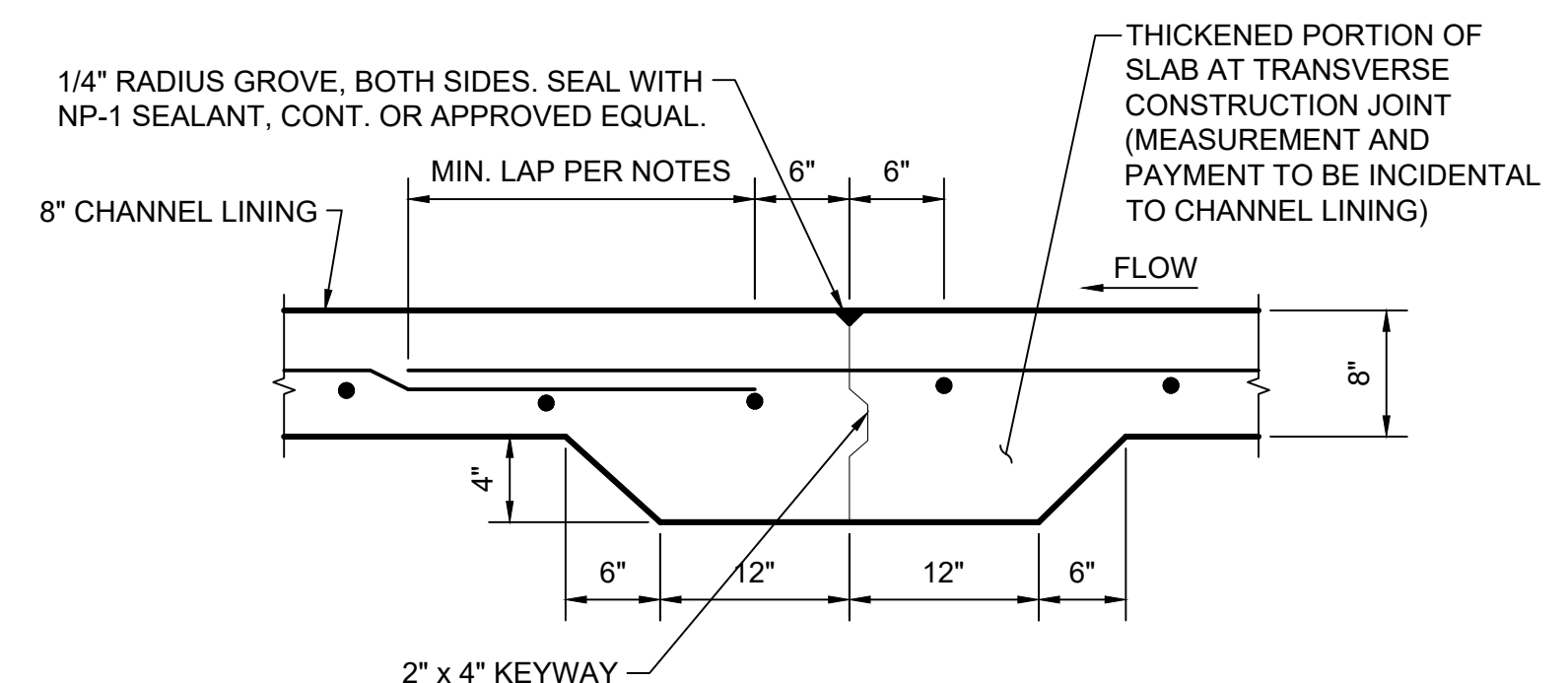
NEW TO EXISTING CHANNEL LINING CONSTRUCTION JOINT DETAILS



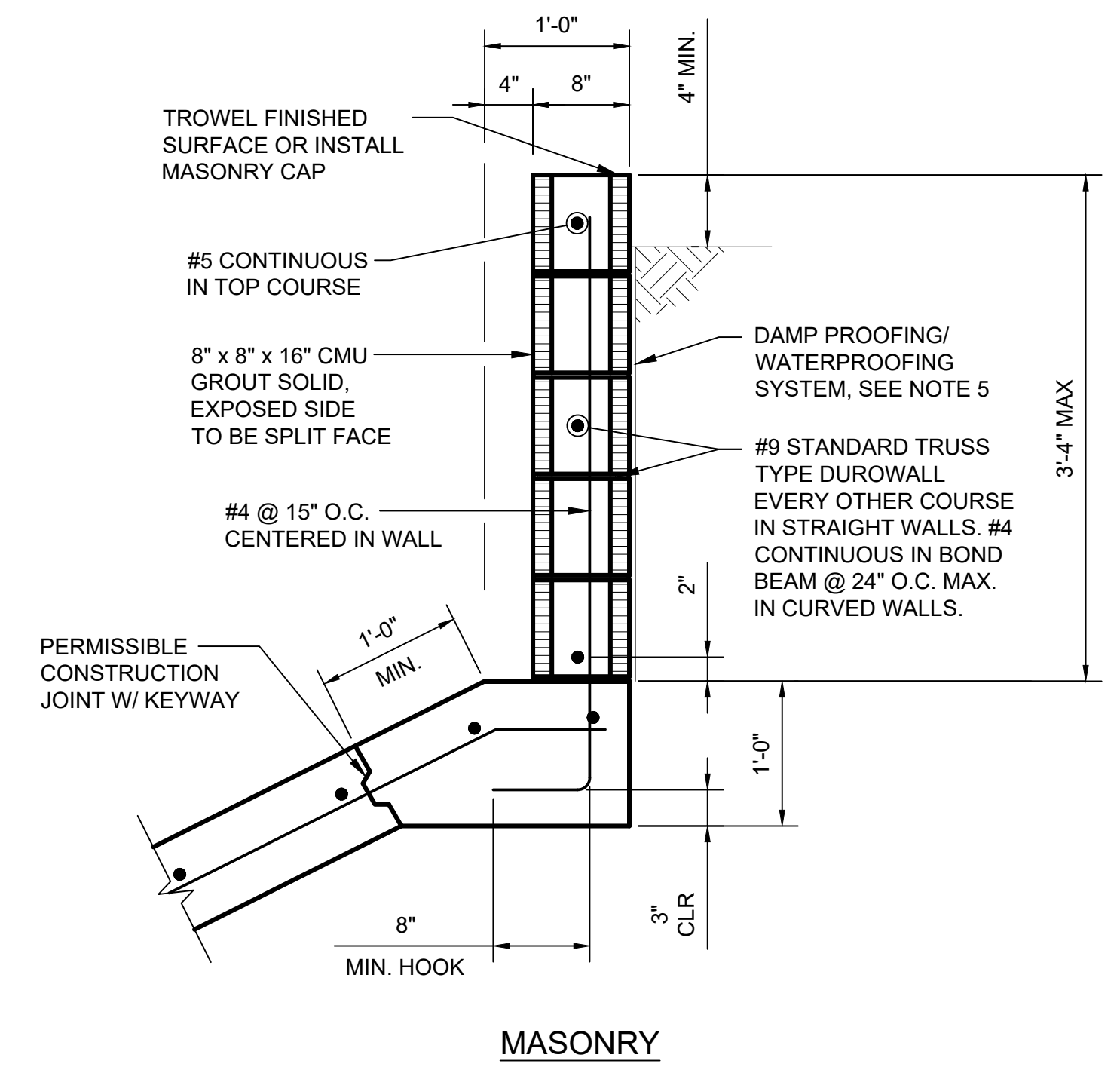
NEW TO EXISTING CHANNEL LINING CONSTRUCTION DOWELED JOINT DETAILS



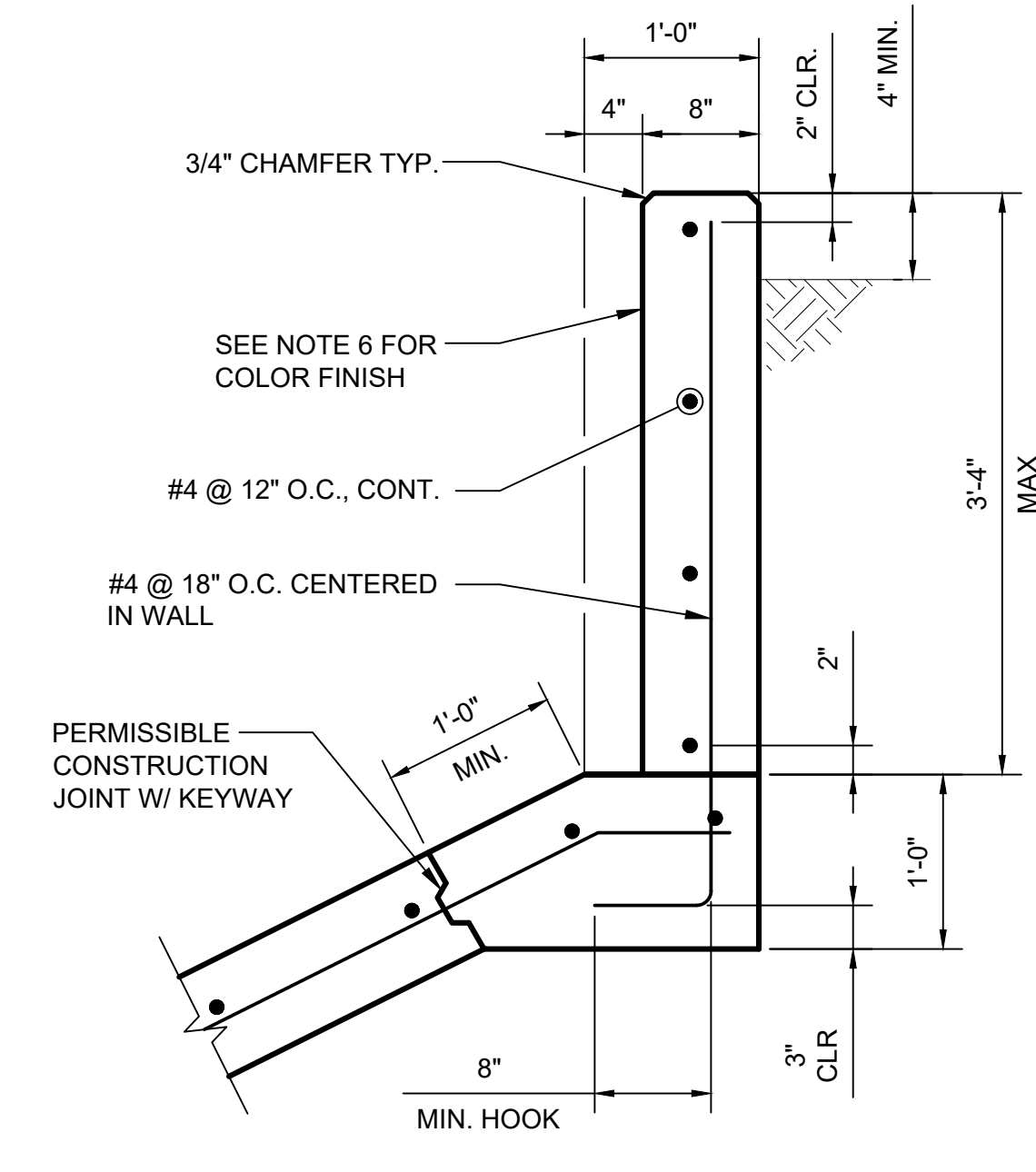
TYPICAL LONGITUDINAL CAST-IN-PLACE CONCRETE CONSTRUCTION JOINT DETAIL



TYPICAL TRANSVERSE CAST-IN-PLACE CONSTRUCTION JOINT DETAIL

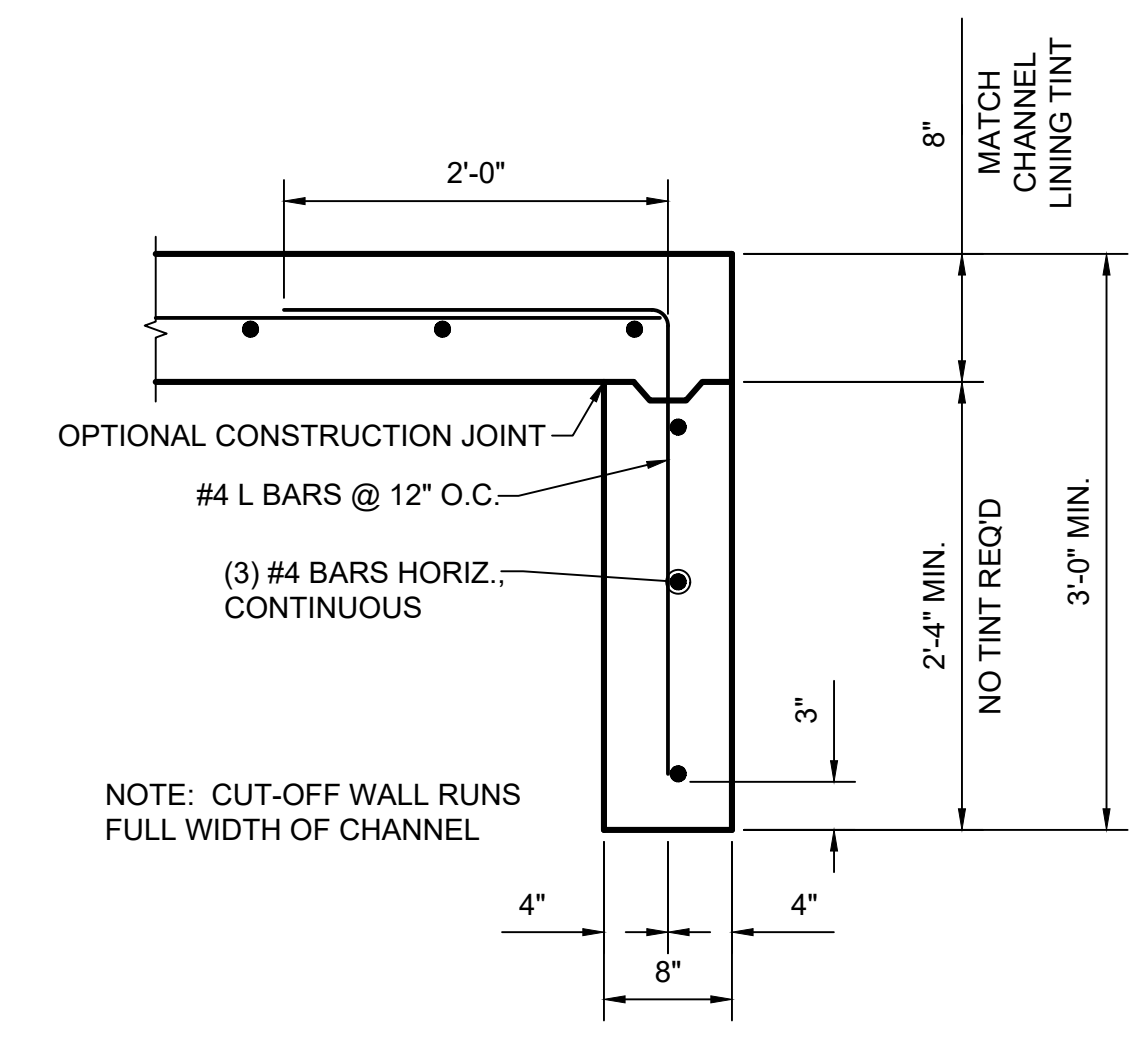


MASONRY



CONCRETE

TYPICAL SILL WALL DETAIL



TYPICAL CUT-OFF WALL SECTION

GENERAL NOTES

1. ALL TRANSVERSE REINFORCEMENT SHALL BE #5 @ 15" O.C. CONT.
2. ALL LONGITUDINAL REINFORCEMENT SHALL BE #7 @ 15" O.C. CONT.
3. WHERE LAP SPLICES IN REINFORCING OCCUR, THE MINIMUM LAP SHALL BE MADE AS FOLLOWS UNLESS OTHERWISE NOTED:

BAR SIZE	LAP SPLICE LENGTH
#4	2'-0"
#5	2'-6"
#6	3'-0"
#7	3'-6"
#8	4'-6"

4. NEW TO EXISTING CHANNEL CONSTRUCTION: EUCCO ARC LITHIUM NITRATE TREATMENT IS REQUIRED FOR ANY EXISTING CONCRETE CHANNELS. SEE DETAILS FOR INSTALLATION REQUIREMENTS, THIS SHEET.
5. THE EARTH SIDE OF SILL WALLS SHALL BE WATERPROOFED AT IRRIGATED AREAS AND DAMP PROOFED AT ALL OTHER AREAS. WATERPROOFING SHALL BE CONWRAP BARRIER CS-212 AS MANUFACTURED BY CONCRETE SEALANTS, INC. (MEMBRANE THICKNESS 0.100 INCHES MINIMUM, OR ENGINEER APPROVED EQUAL). DAMP PROOFING SHALL BE HYDROCID 700B OR ENGINEER APPROVED EQUAL.
6. ALL EXPOSED SURFACES OF THE CHANNEL SILL WALLS SHALL RECEIVE A "THOROCOAT" CLASS 4 FINISH. THE COLOR SHALL BE SIMILAR TO THE TINTED CHANNEL LINING AND SHALL BE APPROVED BY AMAFCA. "THOROCOAT" SHALL BE APPLIED TO THE BACK OF WALLS 6 INCHES BELOW GRADE.

KEYED NOTES

1. EUCCO ARC LITHIUM NITRATE COATING OR APPROVED EQUAL APPLIED TO VERTICAL SURFACE AND 12" OF TOP SURFACE OF EXISTING CONCRETE TO REMAIN.
2. REMOVAL OF CONCRETE ADJACENT TO THE 2" SAWCUT WILL BE WITH A 30 LB., MAX. PNEUMATIC HAMMER. IN THE EVENT OF DAMAGE TO THE CONCRETE TO REMAIN, THE CONTRACTOR SHALL RE SAW THE 2" JOINT AND REMOVE AND REPLACE THAT CONCRETE AT NO COST TO AMAFCA. LIMITS OF CONCRETE REMOVAL ARE SUBJECT TO AMAFCA APPROVAL PER FIELD VERIFICATION.
3. IF REINFORCEMENT IS UNKNOWN, EXPLORATORY REMOVAL MAY BE REQUIRED. SUCH REMOVAL SHALL ONLY BE ALLOWED W/ WRITTEN PERMISSION FROM AMAFCA.