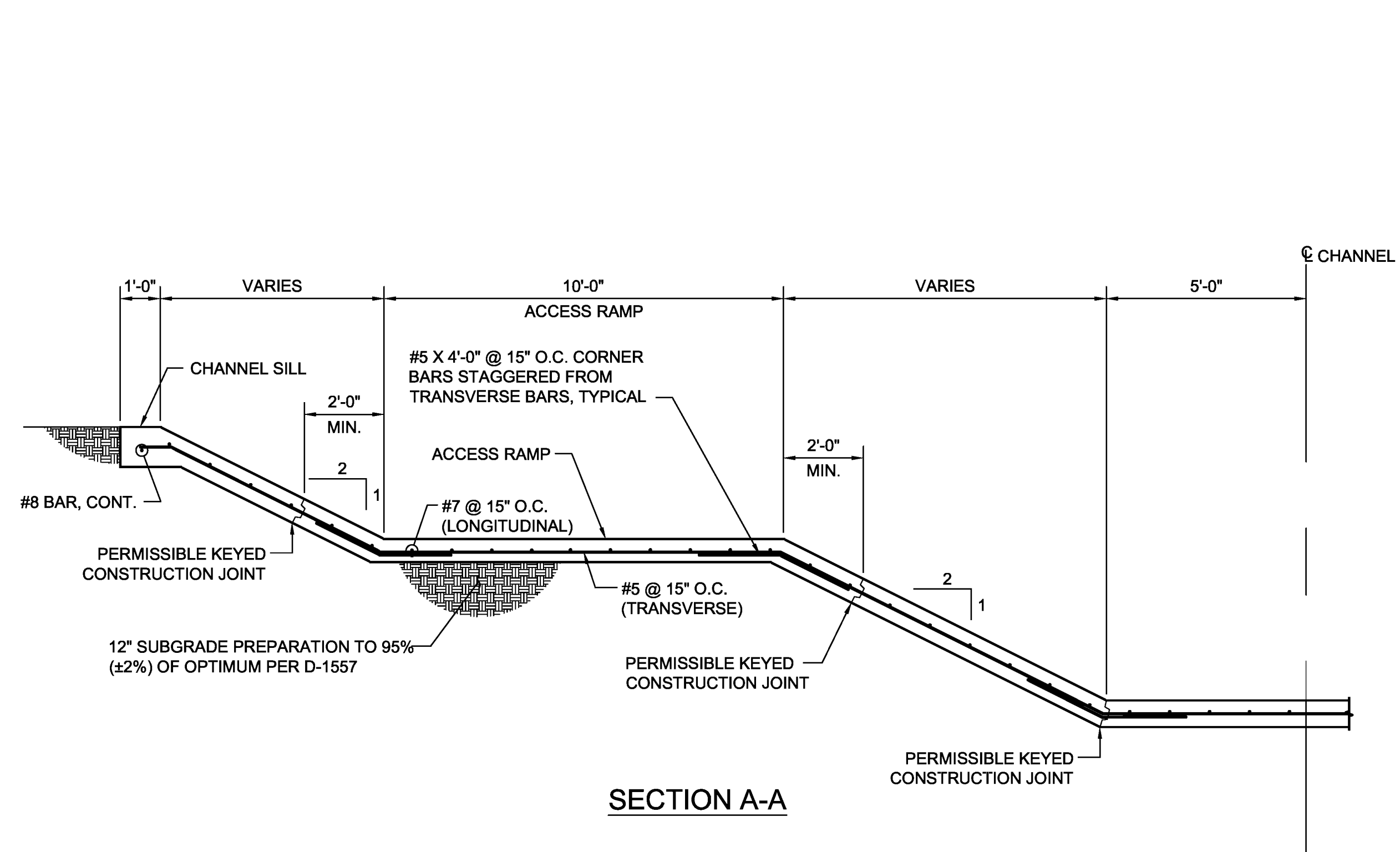


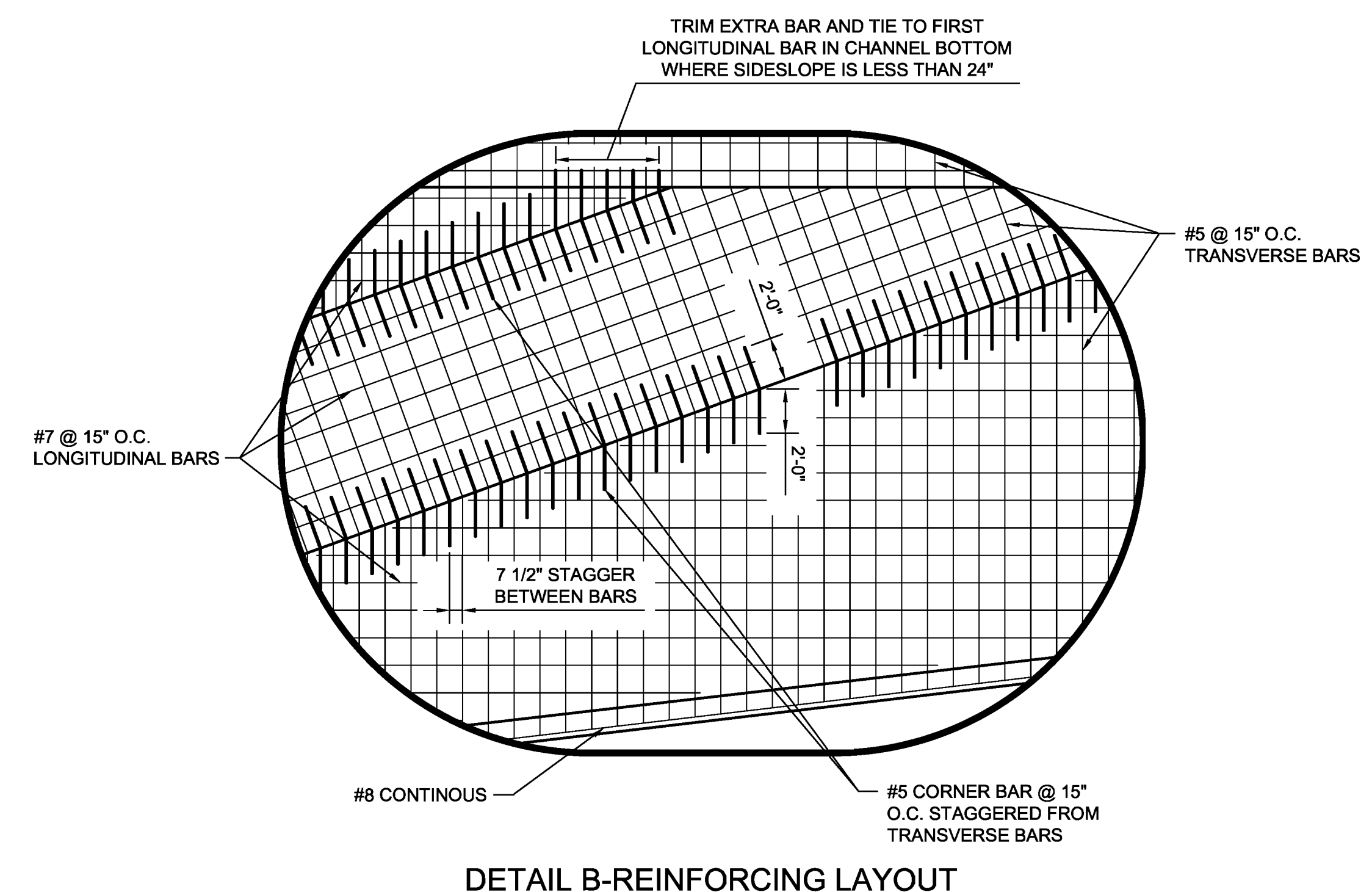
**TYPICAL ACCESS RAMP**  
NO SCALE

**GENERAL NOTES**

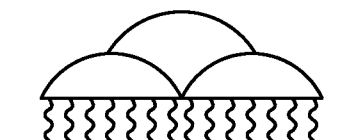
1. THE ACCESS RAMP DETAILED HEREIN SHALL BE PAID FOR AS CONCRETE CHANNEL LINING AND SHALL BE COMPENSATION FOR THE RAMP COMPLETE AND IN PLACE.
2. THE RAMP SHALL BE TINTED TO MATCH ADJACENT CHANNEL LINING UNLESS OTHERWISE NOTED.



**SECTION A-A**



**DETAIL B-REINFORCING LAYOUT**



**ALBUQUERQUE METROPOLITAN  
ARROYO FLOOD CONTROL AUTHORITY**

AMAFCA  
STANDARD DETAILS

CONCRETE CHANNELS  
ACCESS RAMP SECTIONS AND DETAILS

REV	DATE	DESCRIPTION	CHKD

DRAWING NO. 107	MAP NO.	SHEET	OF
-----------------	---------	-------	----