

RUNDOWN SPOT ELEVATION SCHEDULE

RUNDOWN LOCATION (STA.)	A	B	C	D*	E*	F

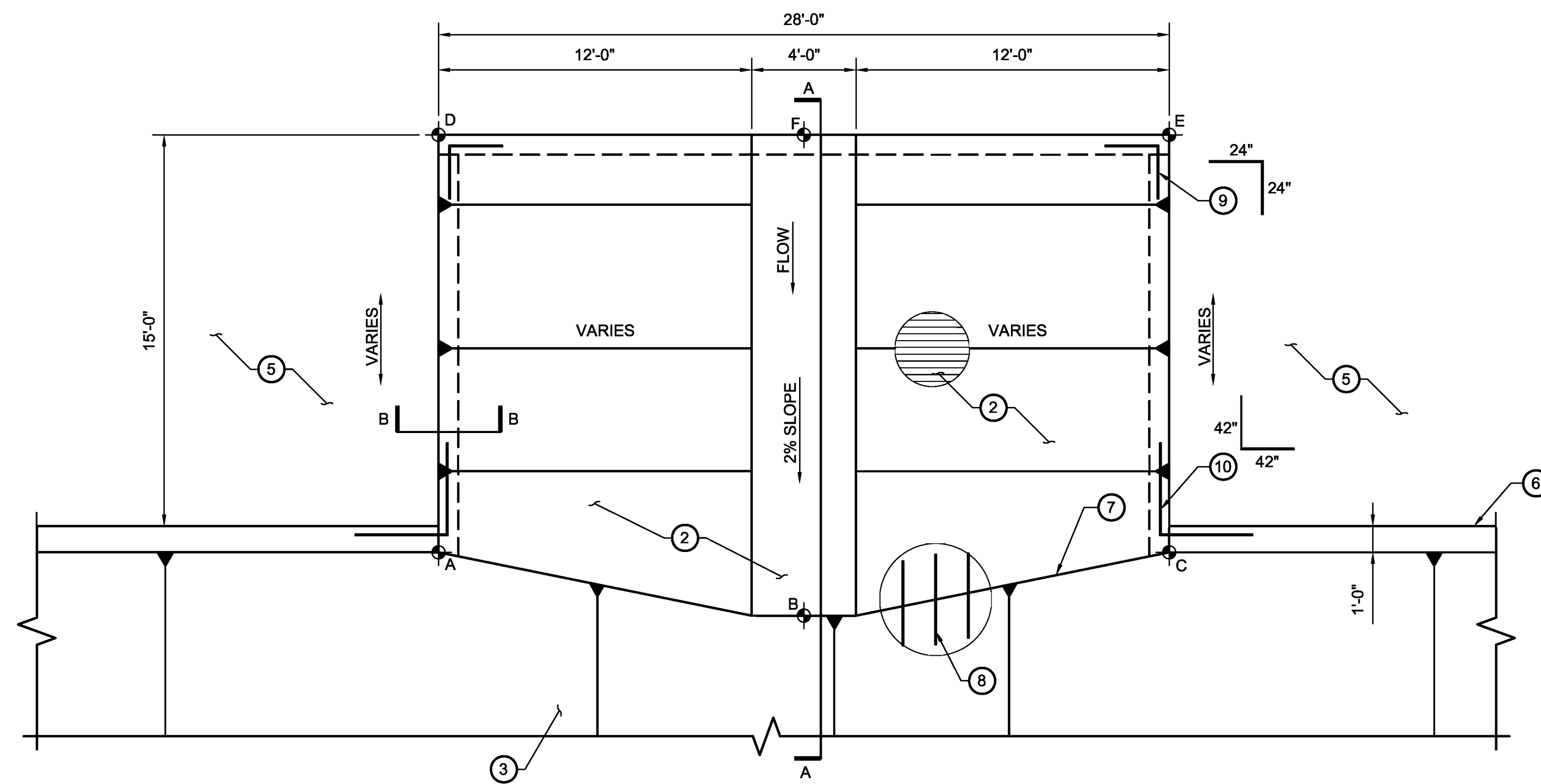
* NOTE: THE DOWNSTREAM SPOT ELEVATION "D" OR "E" SHALL BE 6" (MIN.) HIGHER THAN SPOT ELEVATION "F". THE UPSTREAM SPOT ELEVATION "D" OR "E" SHALL BE 3" (MIN.) HIGHER THAN SPOT ELEVATION "F".

KEYED NOTES

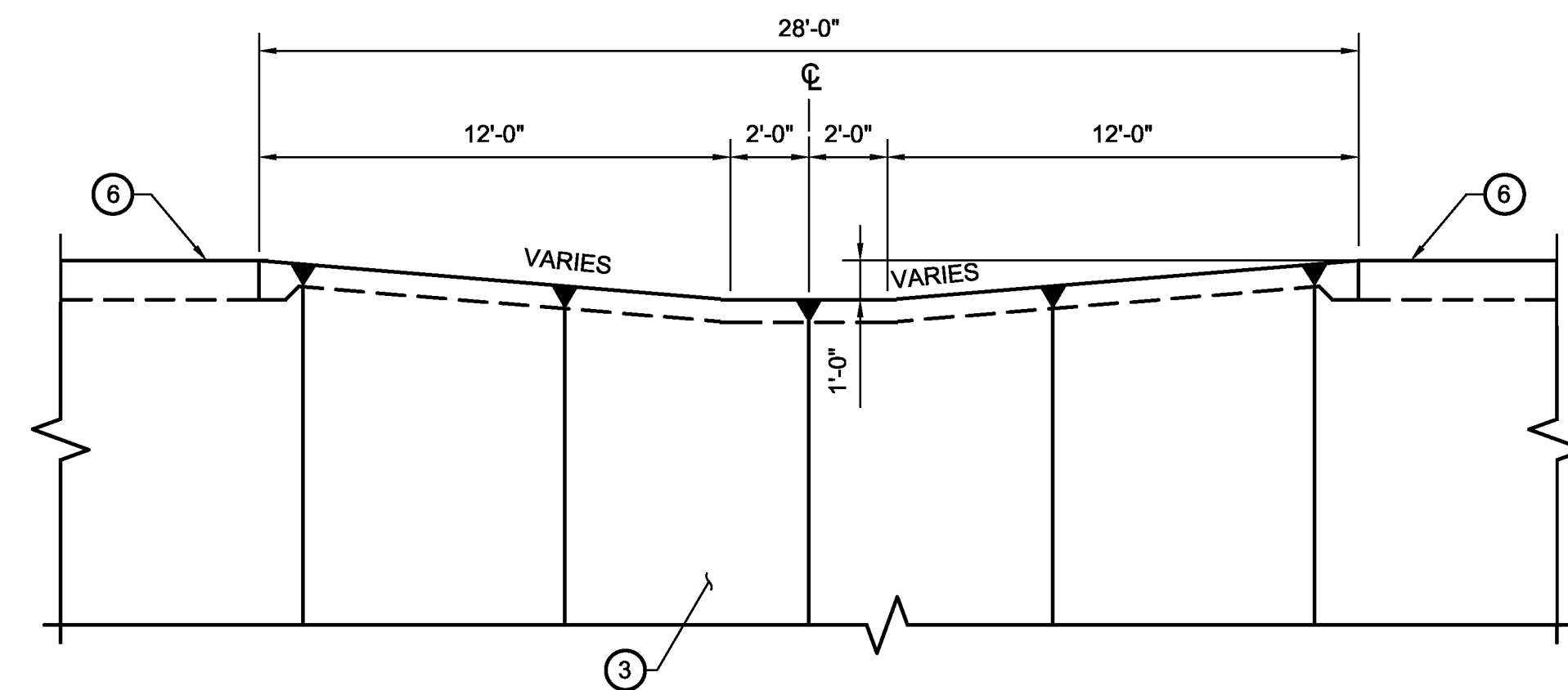
- RUNDOWNS SHALL BE CONSTRUCTED OF 6" THICK CONCRETE WITH #5 BARS AT 15" O.C. CONCRETE SHALL BE TINTED TO MATCH CHANNEL COLOR.
- EXPOSED CONCRETE SURFACE OF THE RUNDOWN SHALL BE FINISHED WITH A TINE FINISH TRANSVERSE TO RUNDOWN FLOW
- 8" CHANNEL LINING
- COMPACTED SUBGRADE - 95% MODIFIED PROCTOR, SAME CONDITIONING AS UNDER CHANNEL LINING
- MAINTENANCE ROAD
- CHANNEL SILL
- ALLOWABLE CONSTRUCTION JOINT WITH KEYWAY
- #5 DOWEL @ 15" O.C.
- #5 CORNER BAR, TYP.
- #8 CORNER BAR, TYP.
- TOOLED 1/4" RADIUS BOTH SIDES WITH NP-1 SEALANT OR APPROVED EQUAL
- #8 ON 6" SAND SHAIR

DESIGN DATA

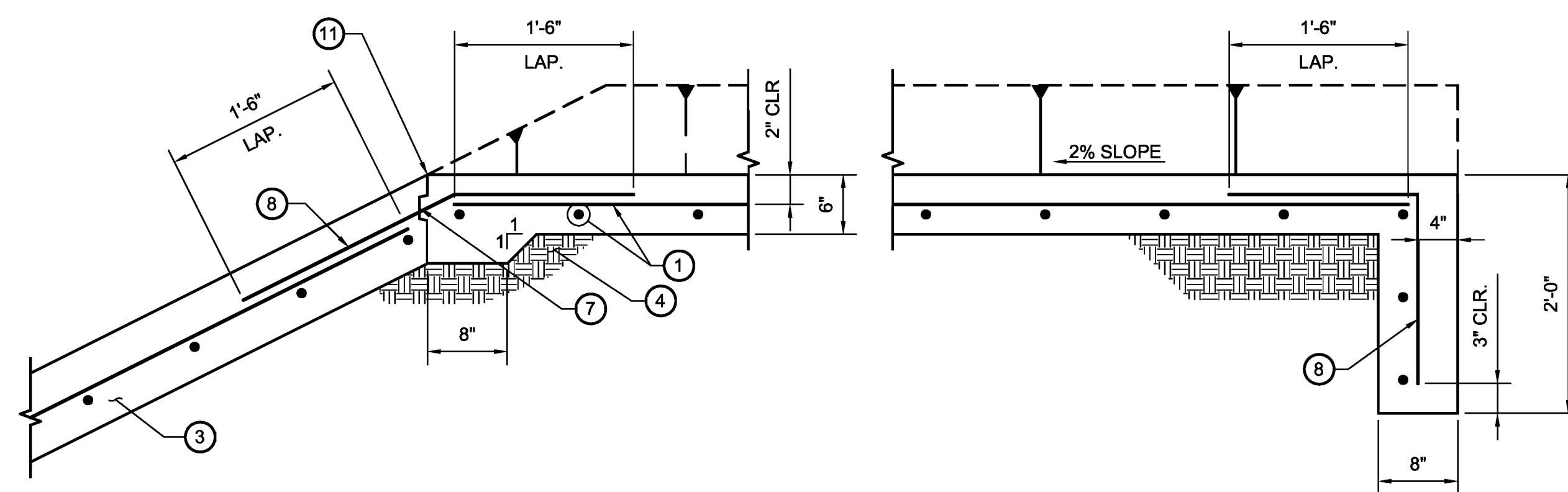
- | | |
|----------------------------------|--|
| A. CAST-IN-PLACE CONCRETE: | F'C = 3000 PSI |
| B. REINFORCING STEEL: | ASTM A615 GRADE 60 |
| C. MOISTURE AND DENSITY CONTROL: | ASTM D-1557 ALL FILL MATERIAL SHALL BE PLACED IN HORIZONTAL LIFTS OF 8" MAXIMUM AND COMPACTED TO 95 PERCENT OF MAXIMUM DRY DENSITY. THE MOISTURE CONTENT SHALL BE OPTIMUM TO ±2 PERCENT. |



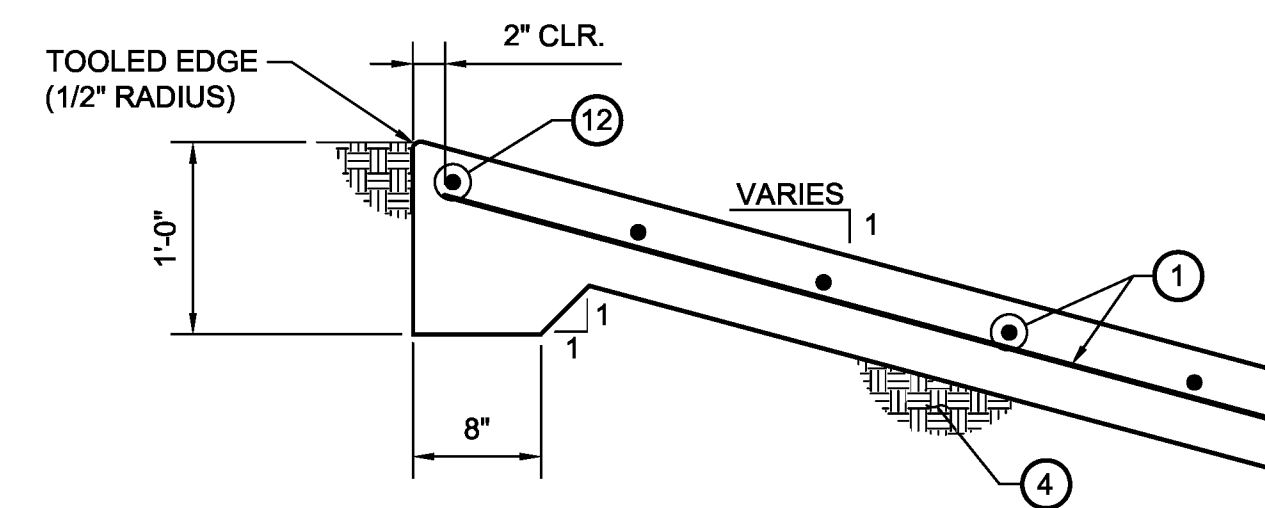
CONCRETE CHANNEL RUNDOWN PLAN
NO SCALE



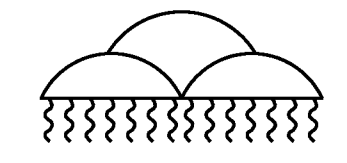
RUNDOWN ELEVATION
NO SCALE



RUNDOWN SECTION A-A
NO SCALE



RUNDOWN SECTION B-B
NO SCALE



**ALBUQUERQUE METROPOLITAN
ARROYO FLOOD CONTROL AUTHORITY**

AMAFCA
STANDARD DETAILS

CHANNEL RUNDOWN
PLAN AND DETAILS

REV	DATE	DESCRIPTION	CHKD

DRAWING NO. 108	MAP NO.	SHEET	OF
-----------------	---------	-------	----