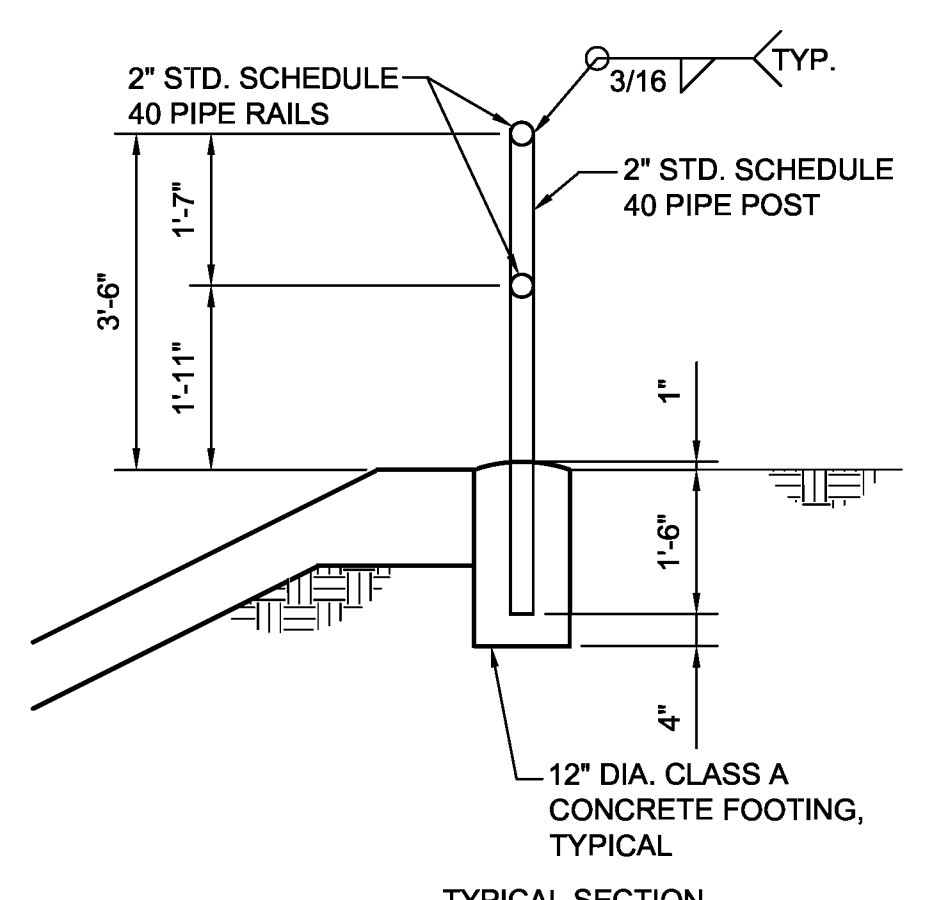


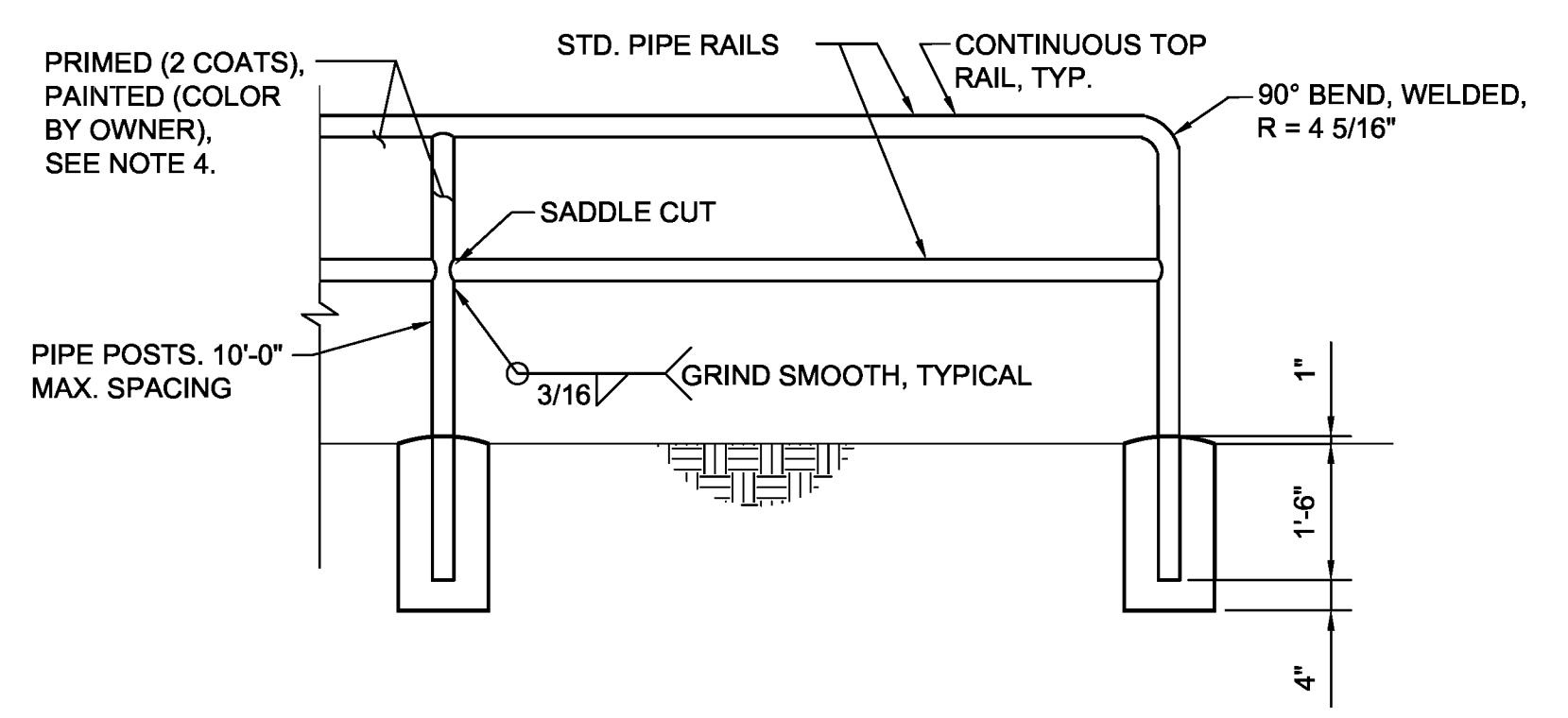
FOR RAILING LONGER THAN 50'-0", INSTALL EXPANSION JOINTS EQUALLY SPACED BUT NOT MORE THAN 40'-0" O.C. ON ALL HORIZONTAL RAILS.

**TYPICAL RAILING EXPANSION JOINT**  
N.T.S.



TYPICAL SECTION

**TYPICAL PIPE RAIL MOUNTED ON GRADE**  
N.T.S.

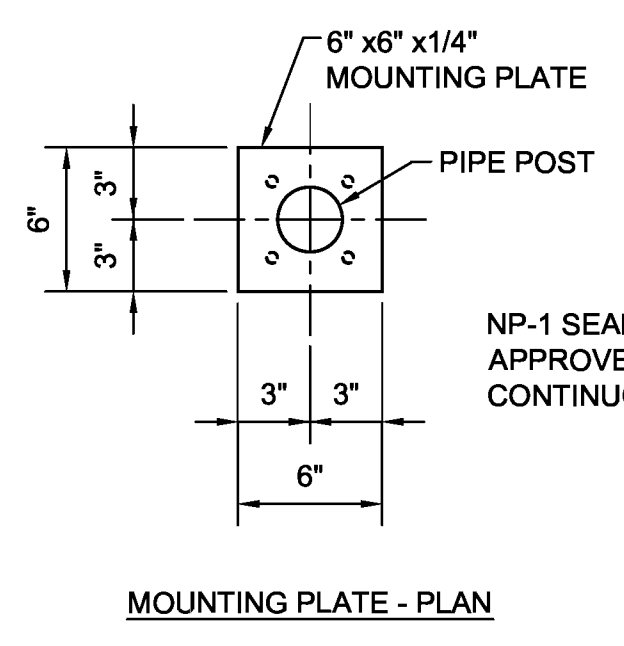


TYPICAL FRAME ELEVATION

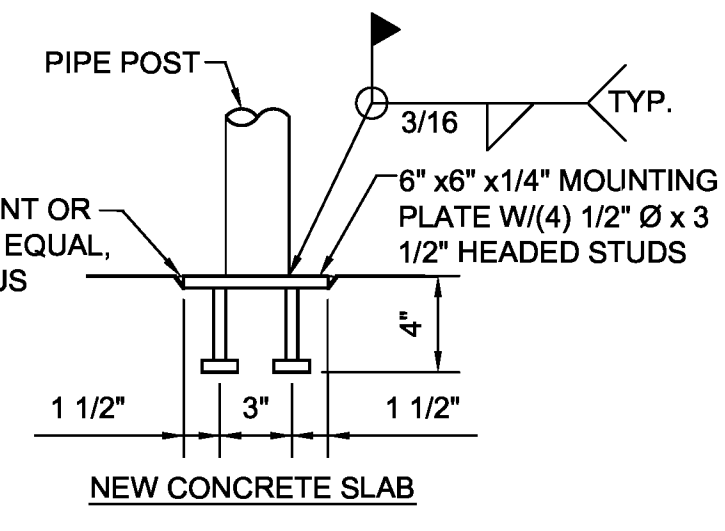
N.T.S.

**NOTES FOR PIPE RAILS**

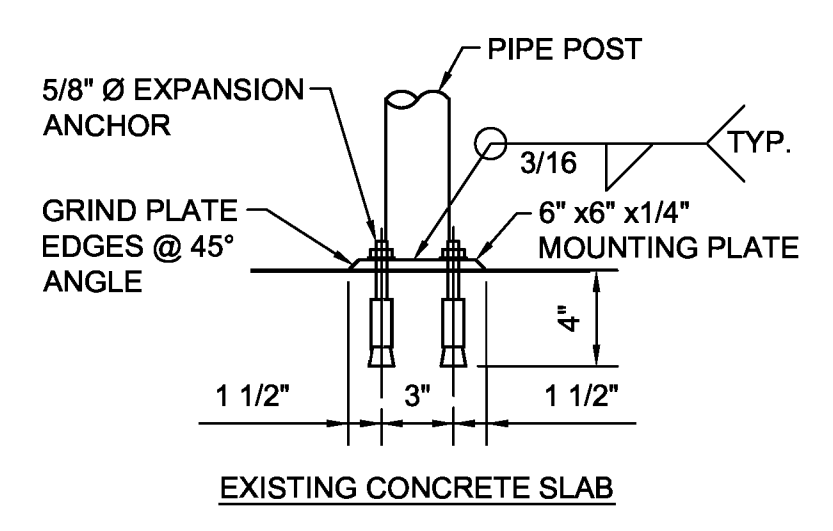
1. WORKMANSHIP AND MATERIALS SHALL CONFORM TO THE NEW MEXICO DEPARTMENT OF TRANSPORTATION STANDARD SPECIFICATIONS FOR HIGHWAY AND BRIDGE CONSTRUCTION AND SUPPLEMENTAL SPECIFICATIONS, 2007 EDITION.
2. ALL PIPE SHALL BE 2" SCHEDULE 40 STEEL PIPE AND CONFORM WITH ASTM A53 GRADE B. THE TOP RAIL SHALL BE CONTINUOUS, WITH POSTS, MIDDLE RAIL AND BOTTOM RAILS SADDLE CUT, WELDED ALL AROUND AND GRIND BEFORE PAINTING.
3. CHAINLINK SHALL CONFORM TO THE REQUIREMENTS OF AASHTO M181, WITH A CLASS C COATING OR BETTER. THE WIRE SHALL BE GALVANIZED, 9 GAUGE, WITH A 2" MESH. SELVAGE ON TOP AND BOTTOM TO BE KNUCKLE/KNUCKLE. THE CHAINLINK SHALL BE TACK WELDED AT 3 PLACES PER POST AND 2 PLACES PER RAIL.
4. ALL RAILS, PIPES, PLATES AND TUBING TO BE COLOR COATED. COLOR COATING SHALL BE DUNN-EDWARDS SYN-LUSTRO RUST PREVENTION ALKYD SEMI-GLOSS ENAMEL 9V SERIES OR PITTSBURG PAINT AND GLASS PITTHANE ULTRA URETHANE ENAMEL COATINGS OR APPROVED EQUAL. PRIOR TO COLOR COATING, RAIL IS TO BE PRIMED WITH 2 COATS OF PRIMER BY THE RESPECTIVE MANUFACTURER. COLOR OF FINAL COATING TO BE SELECTED BY THE OWNER.
5. GALVANIZED TENSION BARS AND CLAMPS SHALL BE INSTALLED ON ALL ENDS AND AT ALL CORNERS AND ANGLE POINTS WHERE CHAINLINK IS REQUIRED.
6. NEW MATERIAL SHALL BE USED THROUGHOUT.
7. ALL ANCHOR BOLTS SHALL BE 5/8" DIAMETER EXPANSION ANCHOR WITH A MINIMUM OF 4" EMBEDMENT. PROVIDE HILTI KWIK BOLT II EXPANSION ANCHOR (KB II) OR ENGINEER APPROVED EQUAL. PROVIDE FLAT WASHERS BETWEEN ALL NUTS AND BASE PLATES.
8. BOLTS SHALL CONFORM TO ASTM A325, WASHERS SHALL BE INSTALLED UNDER NUTS OF FASTENERS.
9. BASE PLATES SHALL CONFORM TO ASTM A36. TUBE STEEL SHALL CONFORM TO ASTM A500 GRADE B.
10. ALL WELDING OR GAS CUTTING SHALL BE IN ACCORDANCE WITH THE CURRENT STANDARDS OF THE AMERICAN WELDING SOCIETY D1.1-2000. ALL WELDING SHALL USE E70XX ELECTRODES.
11. PROVIDE EXPANDING POLYSTYRENE FOAM PLUG (2" MIN.) AT THE BASE OF ALL POSTS ON THE WALL MOUNTED PIPE RAIL.



MOUNTING PLATE - PLAN

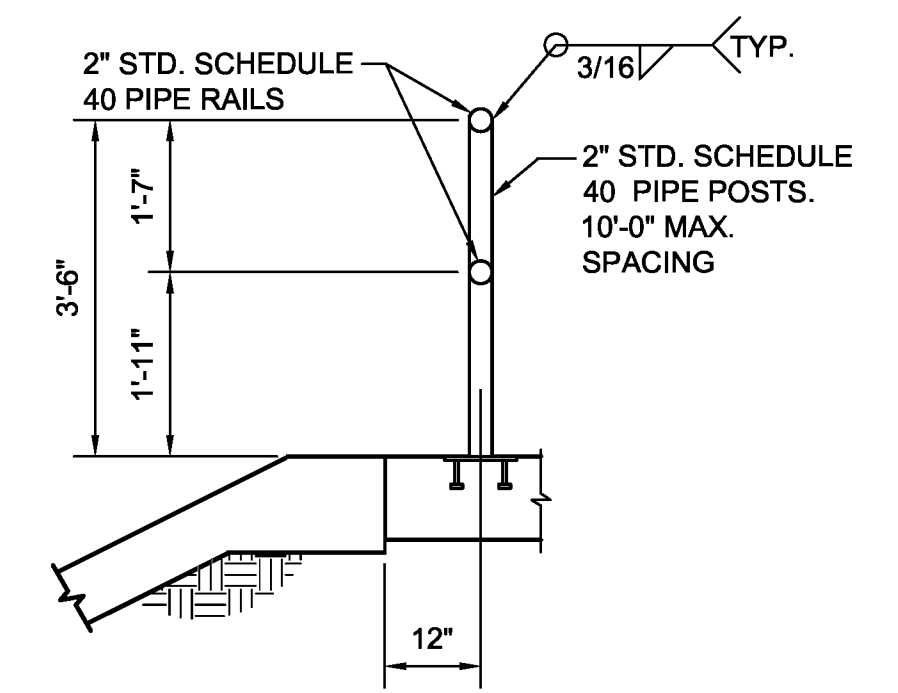


MOUNT - ELEVATION  
NEW CONCRETE SLAB



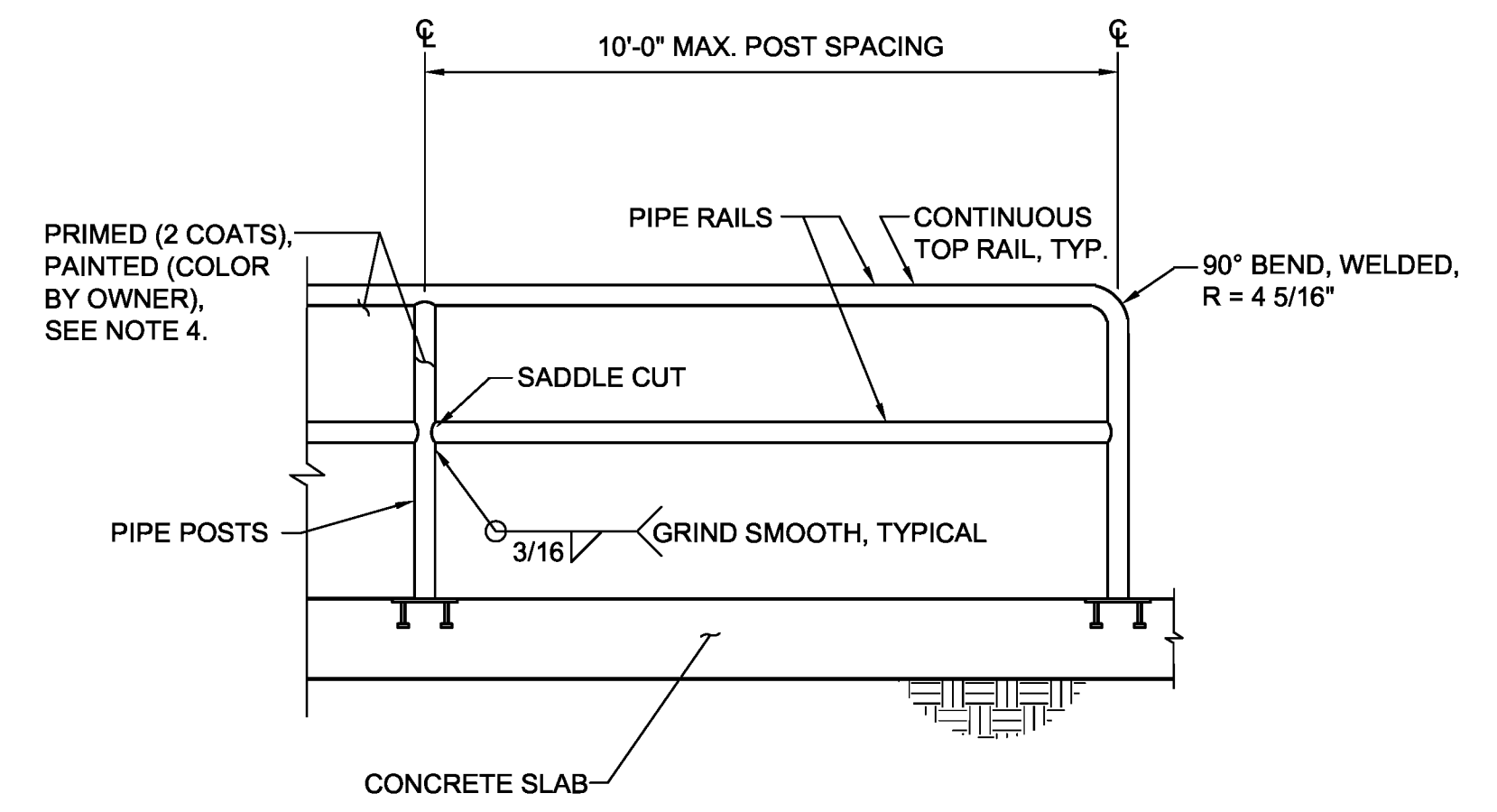
MOUNT - ELEVATION  
EXISTING CONCRETE SLAB

MOUNT - ELEVATION

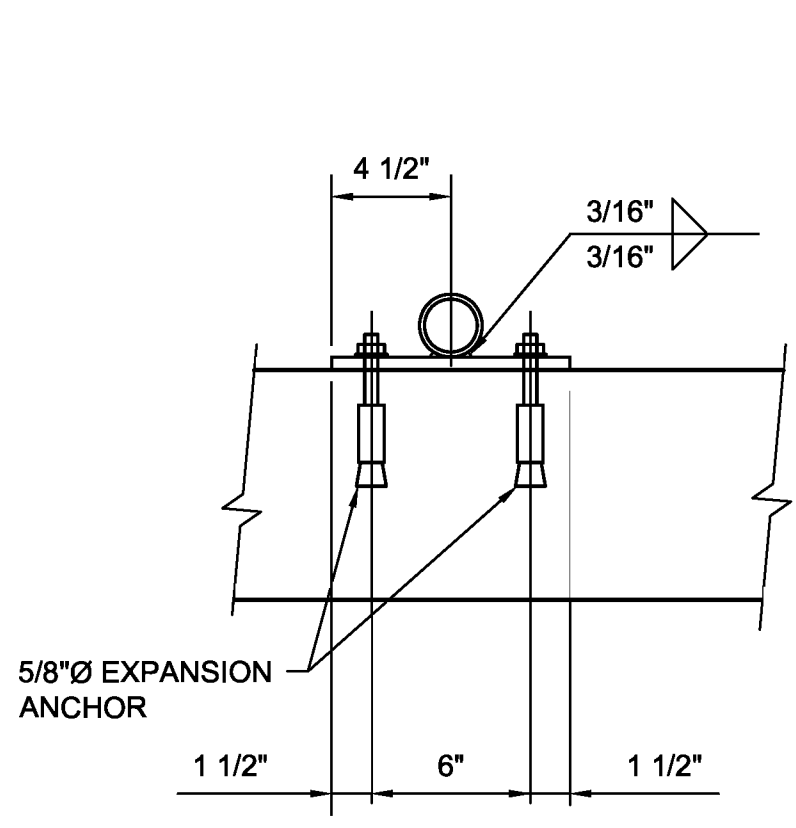


TYPICAL SECTION

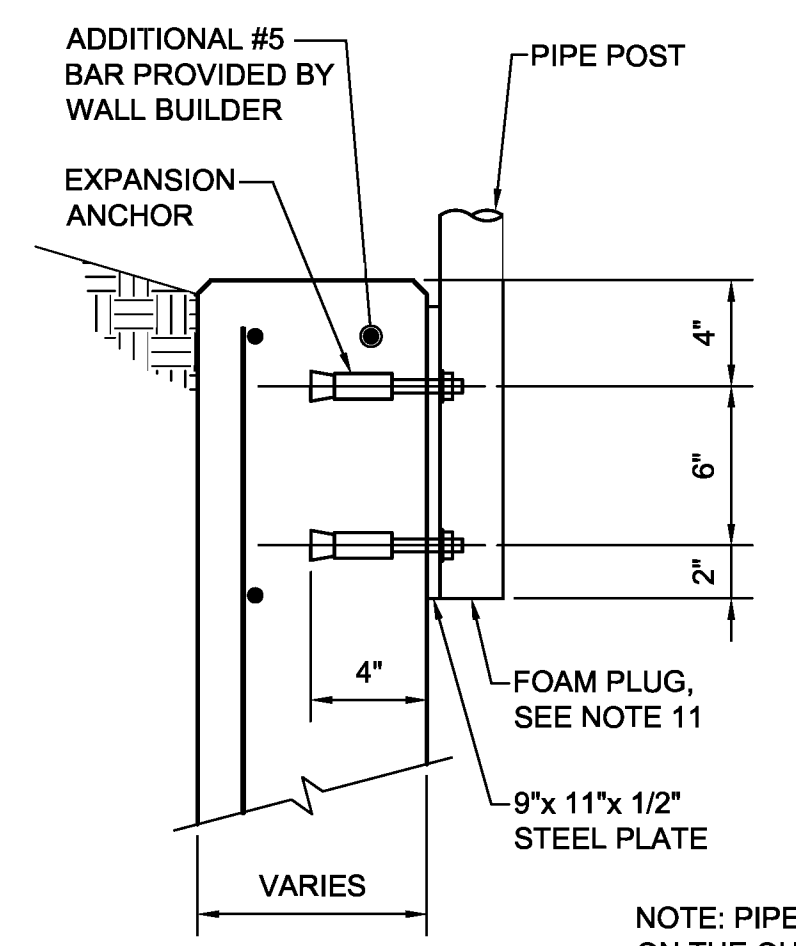
**TYPICAL PIPE RAIL MOUNTED ON SLAB**  
\* OR AS DETERMINED BY THE ENGINEER N.T.S.



TYPICAL FRAME ELEVATION

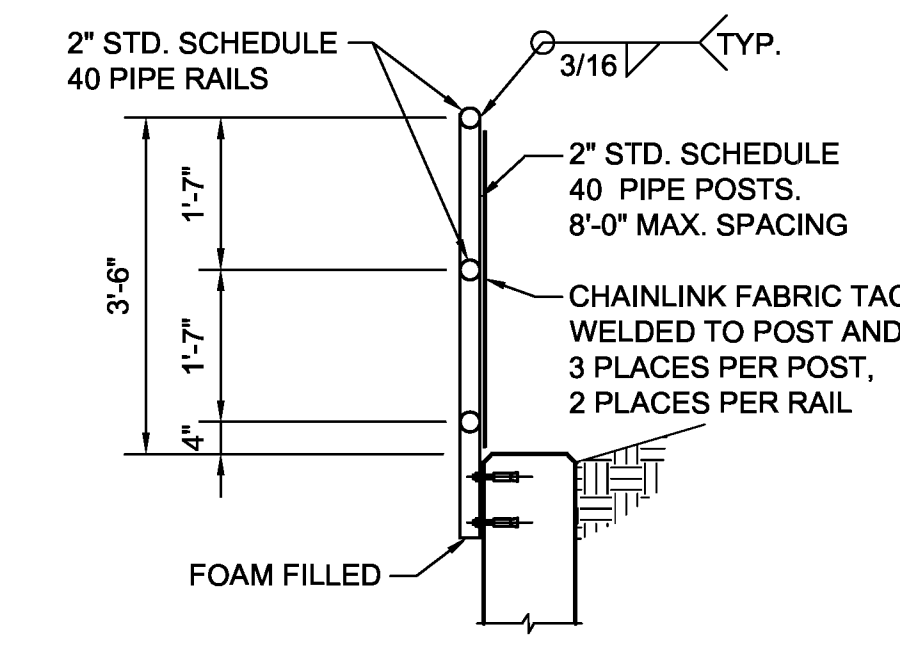


MOUNT - PLAN

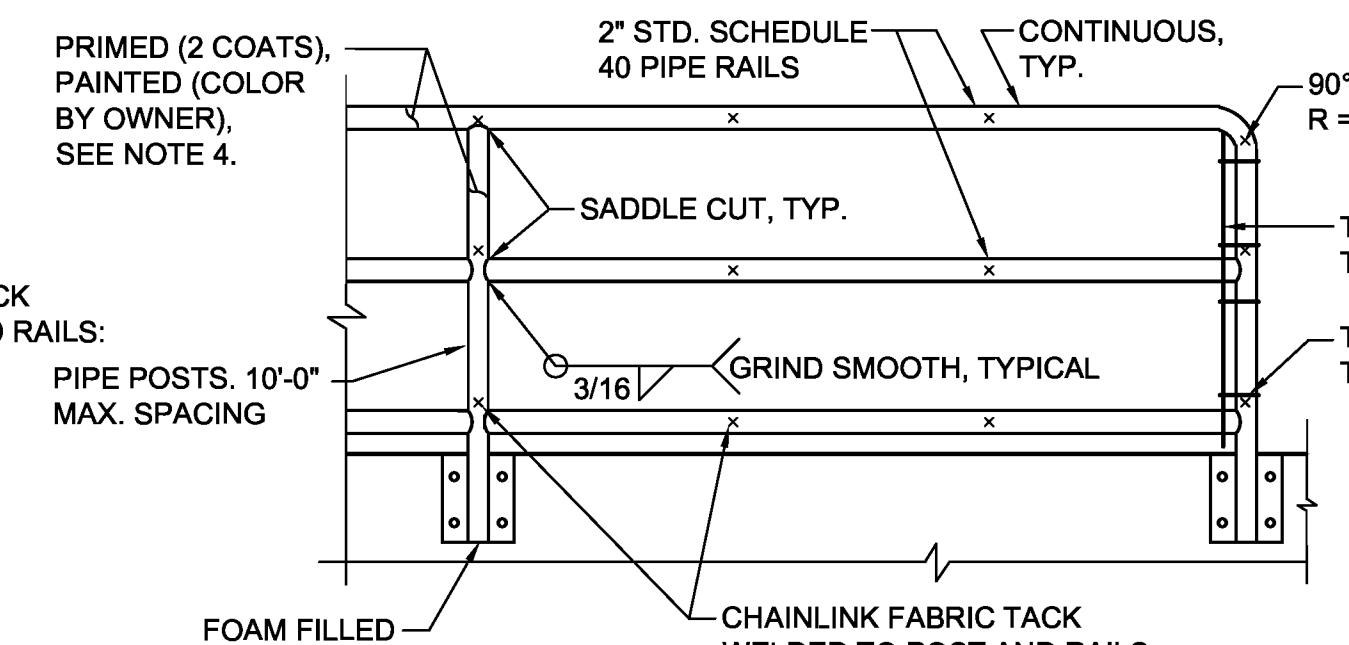


MOUNT - ELEVATION

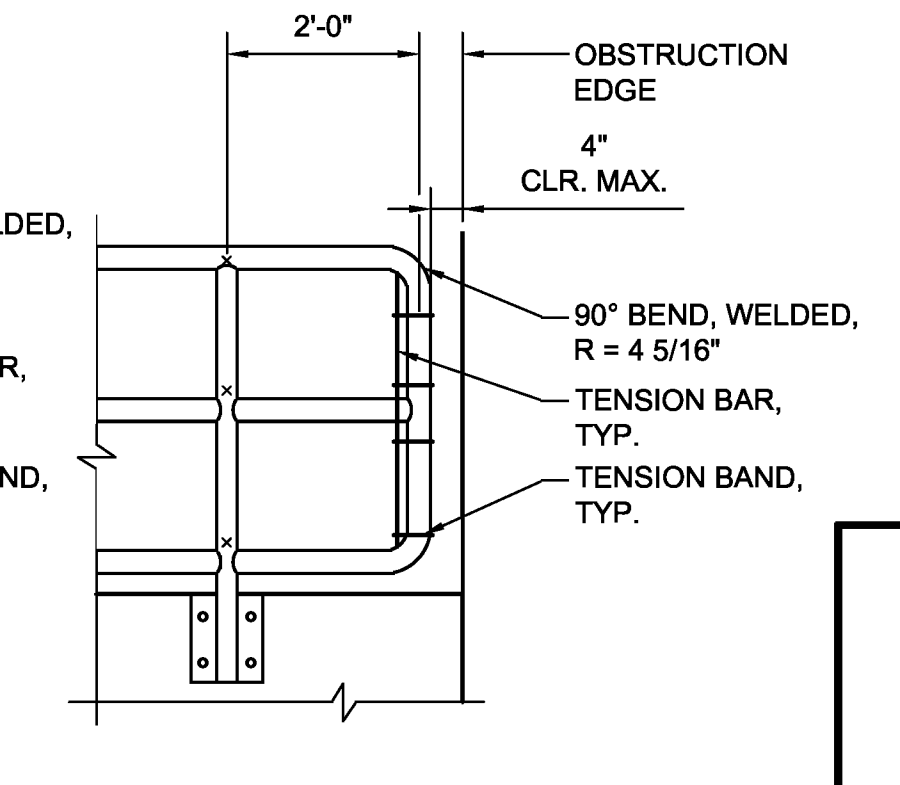
**TYPICAL PIPE RAIL W/ CHAINLINK FENCE MOUNTED ON CONCRETE WALL**  
N.T.S.



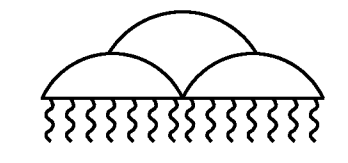
TYPICAL SECTION



TYPICAL FRAME ELEVATION



TYPICAL END FRAME AT OBSTRUCTION



**ALBUQUERQUE METROPOLITAN  
ARROYO FLOOD CONTROL AUTHORITY**

AMAFCA  
STANDARD DETAILS

PIPE RAIL  
DETAILS

REV	DATE	DESCRIPTION	CHKD

DRAWING NO.	201	MAP NO.	SHEET	OF
ISSUE DATE: 8-12-2008				