



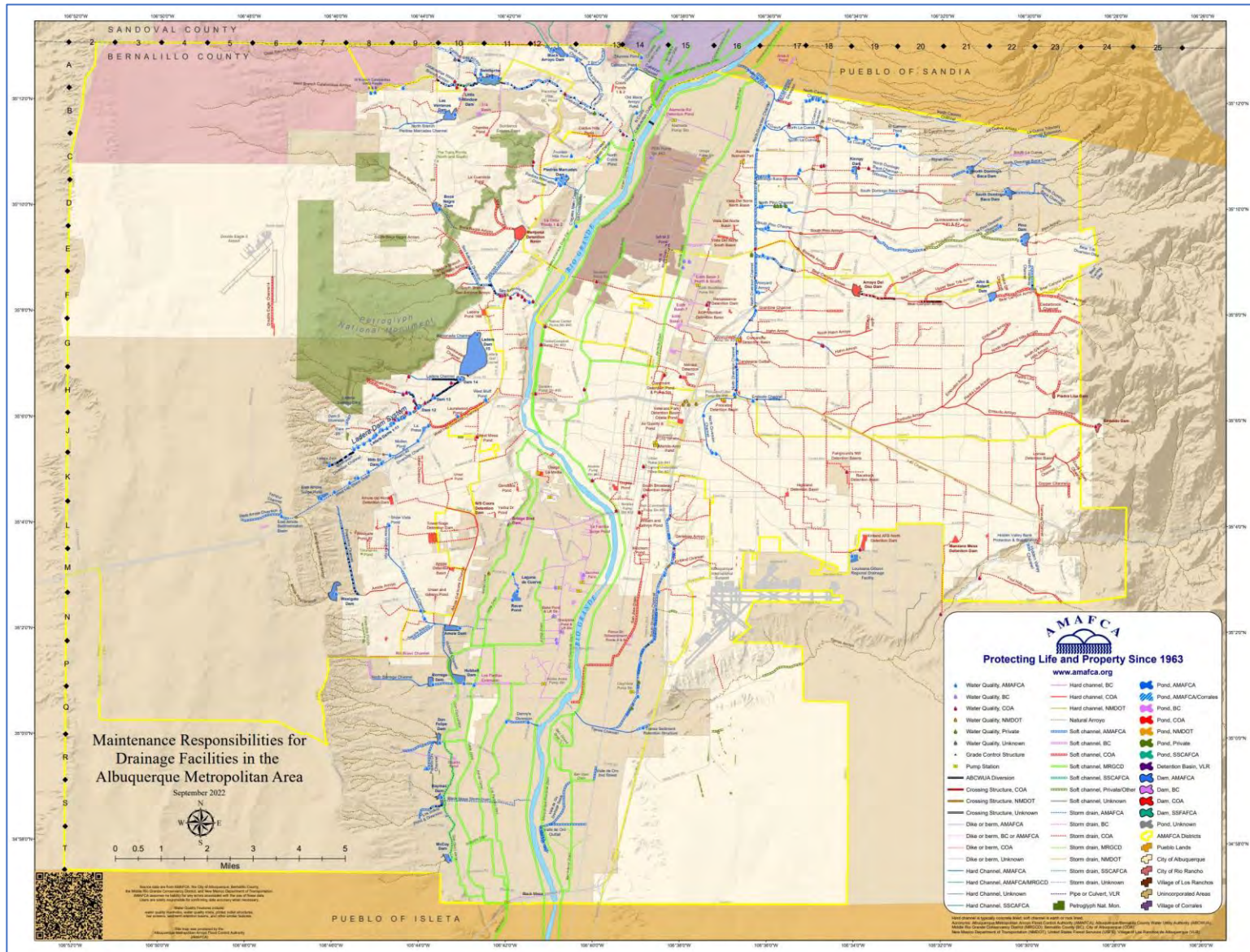
**Summary of AMAFCA's MS4
Illicit Discharges and Improper Disposal Program
FY 2022 (July 1, 2021 – June 30, 2022)**

NPDES Permit No. NMR04A000

Part I.D.5.e - Illicit Discharge and Improper Disposal

AMAFCA's successful Illicit Discharge and Improper Disposal Control Program depends on strong collaborative programs and community relationships, as well as AMAFCA's commitment to addressing illicit discharges. AMAFCA has teamed with the City of Albuquerque on its 311 Community Contact Center hotline (includes website and phone app) for reporting illicit discharges. All AMAFCA staff are trained to address illicit discharge reports. AMAFCA has created forms and procedures for this program, as well as provided staff education. In accordance with AMAFCA's SWMP, AMAFCA has and will continue to follow its procedures and practices to detect and eliminate illicit discharges.

This program uses GIS to track illicit discharge reports and identify areas of concern where additional public outreach and education may be needed. AMAFCA is the leader in the watershed for its Maintenance Responsibilities for Drainage Facilities in the Albuquerque Metropolitan Area. The map below represents facilities throughout the Albuquerque Metropolitan Area for multiple agencies and is essential for ensuring that proper organizations are contacted and involved in any illicit discharge reports, assessment, removal, and/or enforcement.



AMAFCA's Maintenance Responsibilities for Drainage Facilities in the Albuquerque Metropolitan Area Map
https://amafca.org/documents/Maintenance_Map.pdf

AMAFCA also continuously looks for opportunities to add dry weather screening to assist with identifying potential illicit discharges to its numerous projects, leveraging opportunities where staff or consultants are already out in the field. AMAFCA has the added benefit of professional on-staff maintenance crew members who are working throughout their jurisdiction and are equipped and educated to detect illicit discharges.


As an example, AMAFCA's Levelogger flow monitoring in arroyos contributing stormwater runoff to the North Diversion Channel also includes an illicit discharge monthly screening component. The graphics below highlight the Levelogger locations and program visual screening tracking, locations, and photos.

Table 1: Summary of Visual Screenings and Potential Illicit Discharges Detected

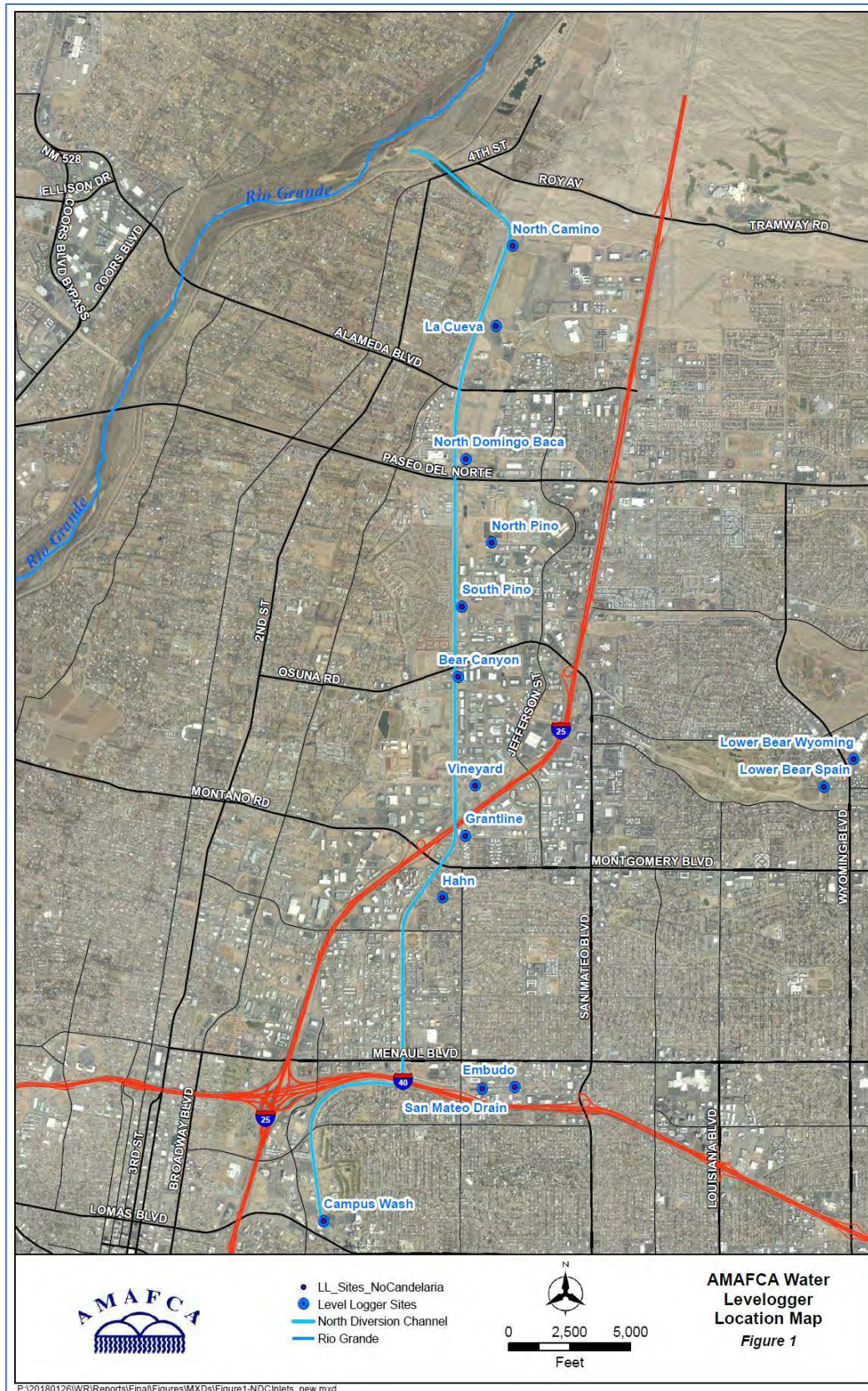
AMAFCA/City of Albuquerque Facility - Levellogger Data Site Location	Number of Visual Screenings July 2021 – July 2022													Cumulative Total of Visual Screenings Completed	Number of Potential Illicit Discharge Indicators Detected July 2021 – July 2022			Cumulative Total of Illicit Discharge Indicators Detected
	July 2021	August 2021	September 2021	October 2021	November 2021	December 2021	January 2022	February 2022	March 2022	April 2022	May 2022	June 2022	July 2022		Aug. – Nov. 2021	Dec. 2021 – March 2022	April – July 2022	
North Camino Arroyo	1	1	1	1	1	1	1	1	1	1	1	1	1	13	0	0	0	0
La Cueva Arroyo	1	1	1	1	1	1	1	1	1	1	1	1	1	13	0	0	0	0
North Domingo Baca	1	1	1	1	1	1	1	1	1	1	1	1	1	13	0	0	0	0
North Pino Arroyo	1	1	1	1	1	1	1	1	1	1	1	1	1	13	0	0	0	0
South Pino Arroyo	1	1	1	1	1	1	1	1	1	1	1	1	1	13	0	0	0	0
Bear Canyon Arroyo	1	1	1	1	1	1	1	1	1	1	1	1	1	13	0	0	0	0
Vineyard Arroyo	1	1	1	1	1	1	1	1	1	1	1	1	1	13	0	0	0	0
Grantline Arroyo	1	1	1	1	1	1	1	1	1	1	1	1	1	13	0	0	0	0
Hahn Arroyo	1	1	1	1	1	1	1	1	1	1	1	1	1	13	0	0	0	0
Embudo Arroyo	1	1	1	1	1	1	1	1	1	1	1	1	1	13	0	0	0	0
San Mateo Drain	1	1	1	1	1	1	1	1	1	1	1	1	1	13	0	0	0	0
Campus Wash	1	1	1	1	1	1	1	1	1	1	1	1	1	13	0	0	0	0
Lower Bear – Upstream (Wyoming)	1	1	1	1	1	1	1	1	1	1	1	1	1	13	0	0	0	0
Lower Bear – Downstream (Spain)	1	1	1	1	1	1	1	1	1	1	1	1	1	13	0	0	0	0

Months associated with site visits to collect the Levellogger data summarized in this report. Site visits retrieve data for the prior month – for example, the April 2022 site visit retrieved the March 2022 Levellogger data.

Levellogger Program Visual Screening Tracking Table for FY 2022

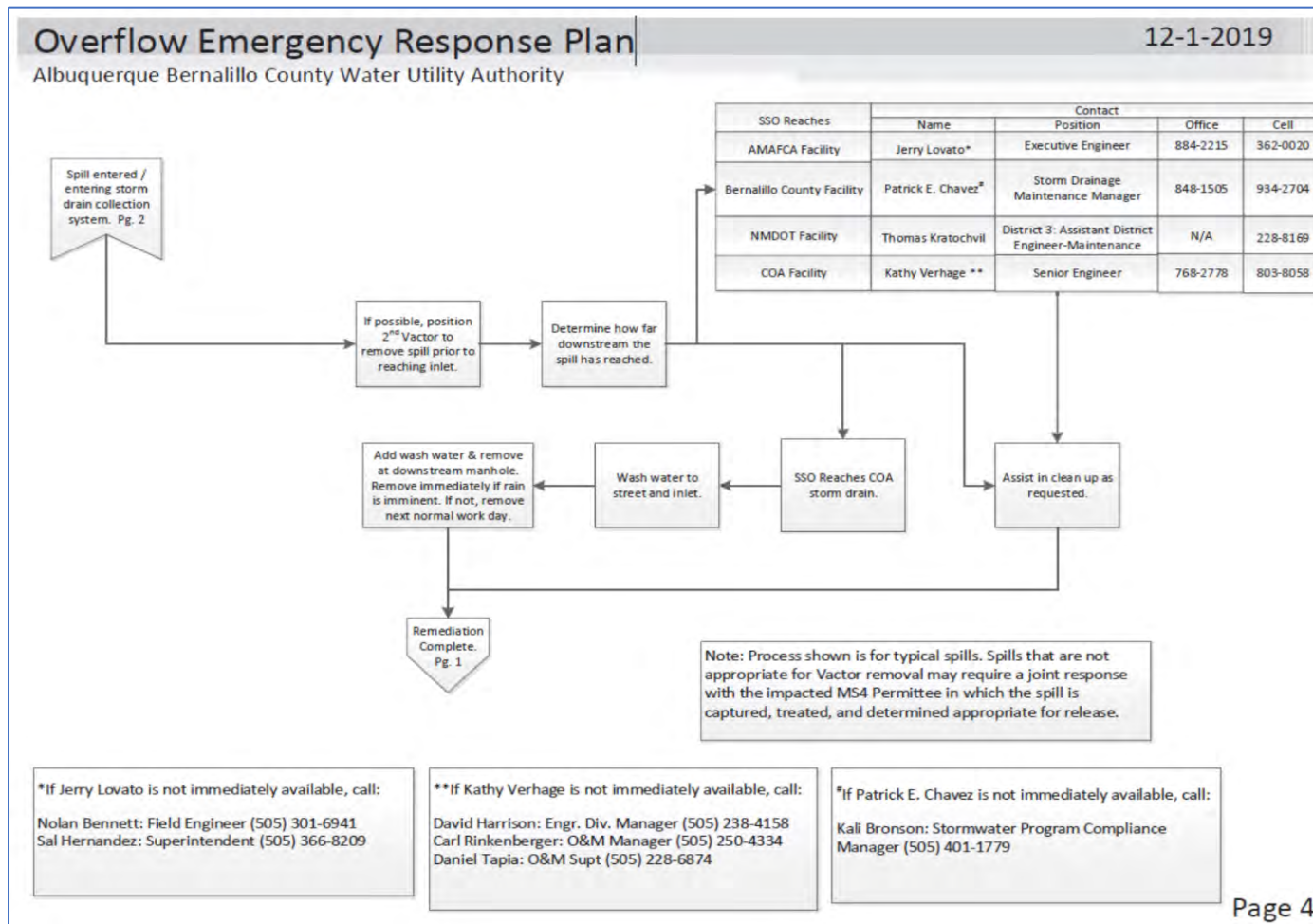
La Cueva Arroyo	April 7, 2022		May 5, 2022		June 2, 2022		July 7, 2022	
								
	Photo 9: La Cueva Arroyo – Looking Upstream		Photo 10: La Cueva Arroyo – Looking Upstream		Photo 11: La Cueva Arroyo – Looking Upstream		Photo 12: La Cueva Arroyo – Looking Upstream	
								
	Photo 13: La Cueva Arroyo – Looking Downstream		Photo 14: La Cueva Arroyo – Looking Downstream		Photo 15: La Cueva Arroyo – Looking Downstream		Photo 16: La Cueva Arroyo – Looking Downstream	

Levellogger Program Visual Screening Photo Documentation – Example from La Cueva Arroyo

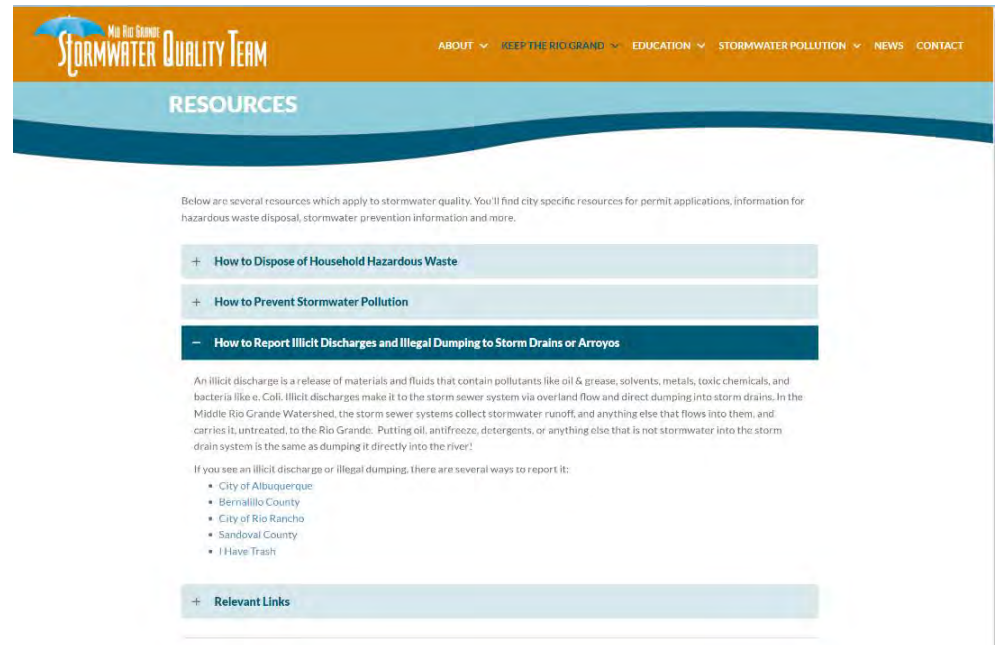
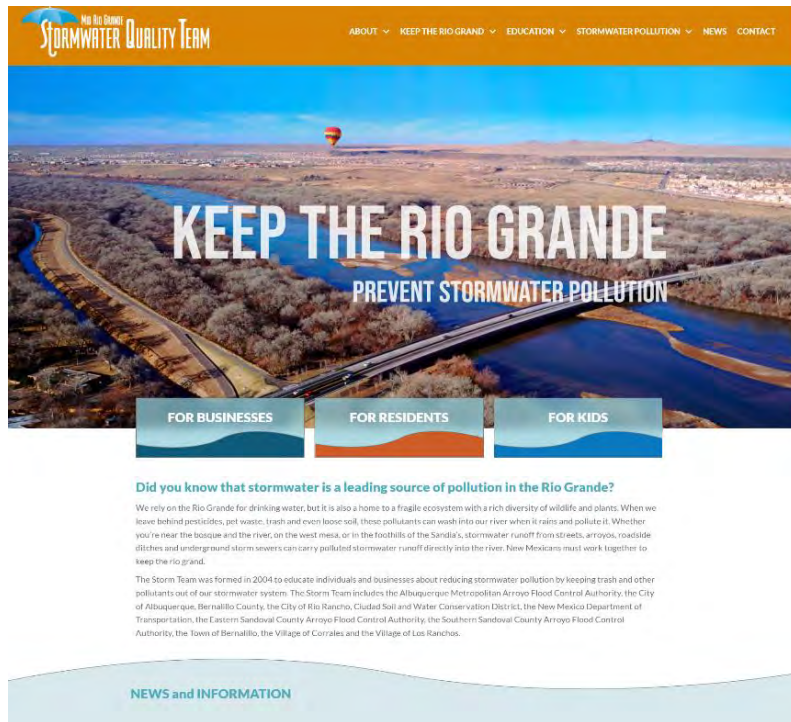


Levellogger Program – Locations of Levelloggers in NDC

Related to collaborative programs and community relationships, AMAFCA coordinates closely with the Albuquerque Bernalillo County Water Utility Authority (ABCWUA) as well as other area agencies, as shown in the ABCWUA's Collection System Overflow Emergency Response Plan (one page included below – full plan available on-line: <https://www.abcwua.org/sewer-system-overview/>). This plan helps ensure that the community responds to and cleans up spills that enter the storm drain collection system.



In addition, AMAFCA is a member in the cooperative Municipal Separate Storm Sewer System (MS4) Technical Advisory Group (MS4 TAG) which facilitates cooperation and coordination with other MS4s in the Middle Rio Grande related to the illicit discharge and improper disposal control program. AMAFCA is also a member of the Mid Rio Grande Stormwater Quality Team (MRGSQT – <https://keeptheriogrand.org/>), which has grown to 12 organizations who leverage their resources to ensure MS4 Permit public education and outreach requirements are met with the goal of preventing and reducing stormwater pollution throughout the watershed from reaching the Rio Grande. The MRGSQT provides educational information regarding stormwater quality to the community, including information that facilitates public reporting of illicit connections or discharges and educational programs that inform the public of hazards associated with illicit discharges and improper waste disposal, as well as proper ways to dispose of hazardous wastes.



*Web View of Links Related to Illicit Discharge and Improper Disposal
on the MRGSQT's Keep The Rio Grande! Website*