



Federal Emergency Management Agency

Washington, D.C. 20472

LETTER OF MAP REVISION DETERMINATION DOCUMENT

COMMUNITY AND REVISION INFORMATION		PROJECT DESCRIPTION	BASIS OF REQUEST
COMMUNITY	Bernalillo County New Mexico (Unincorporated Areas)	CULVERT FILL	2D HYDRAULIC ANALYSIS HYDROLOGIC ANALYSIS UPDATED TOPOGRAPHIC DATA
	COMMUNITY NO.: 350001		
IDENTIFIER	Black Mesa LOMR	APPROXIMATE LATITUDE AND LONGITUDE: 35.010, -106.755 SOURCE: Other DATUM: NAD 83	
ANNOTATED MAPPING ENCLOSURES		ANNOTATED STUDY ENCLOSURES	
TYPE: FIRM* NO.: 35001C0528H DATE: August 16, 2012 TYPE: FIRM NO.: 35001C0529H DATE: August 16, 2012 TYPE: FIRM NO.: 35001C0319H DATE: August 16, 2012 TYPE: FIRM NO.: 35001C0338H DATE: August 16, 2012 TYPE: FIRM NO.: 35001C0339H DATE: August 16, 2012 TYPE: FIRM NO.: 35001C0507G DATE: September 26, 2008 TYPE: FIRM NO.: 35001C0526H DATE: August 16, 2012 TYPE: FIRM NO.: 35001C0527H DATE: August 16, 2012		DATE OF EFFECTIVE FLOOD INSURANCE STUDY: November 4, 2016 SUMMARY OF DISCHARGES FOR SHALLOW ! FLOODING AREAS TABLE: 12 STILLWATER TABLE: 13	

Enclosures reflect changes to flooding sources affected by this revision.

* FIRM - Flood Insurance Rate Map

FLOODING SOURCES AND REVISED REACHES

See Page 2 for Additional Flooding Sources

Pajarito Arroyo (South A) - from the confluence with Don Felipe Dam Detention Basin to approximately 10,300 feet upstream of the confluence of Tributary Pajarito Arroyo (South A)

SUMMARY OF REVISIONS

Flooding Source	Effective Flooding	Revised Flooding	Increases	Decreases
Pajarito Arroyo (South A)	Zone A	Zone X (shaded)	YES	YES
	Zone AO	Zone X (shaded)	YES	YES
	Depths	No Depths	NONE	YES

* BFEs - Base Flood Elevations

DETERMINATION

This document provides the determination from the Department of Homeland Security's Federal Emergency Management Agency (FEMA) regarding a request for a Letter of Map Revision (LOMR) for the area described above. Using the information submitted, we have determined that a revision to the flood hazards depicted in the Flood Insurance Study (FIS) report and/or National Flood Insurance Program (NFIP) map is warranted. This document revises the effective NFIP map, as indicated in the attached documentation. Please use the enclosed annotated map panels revised by this LOMR for floodplain management purposes and for all flood insurance policies and renewals in your community.

This determination is based on the flood data presently available. The enclosed documents provide additional information regarding this determination. If you have any questions about this document, please contact the FEMA Mapping and Insurance eXchange toll free at 1-877-336-2627 (1-877-FEMA MAP) or by letter addressed to the LOMC Clearinghouse, 3601 Eisenhower Avenue, Suite 500, Alexandria, VA 22304-6426. Additional Information about the NFIP is available on our website at <https://www.fema.gov/flood-insurance>.

Patrick "Rick" F. Sacbbit, P.E.
Chief, Engineering Services Branch
Risk Analysis, Planning, and Information Directorate | Resilience



Federal Emergency Management Agency

Washington, D.C. 20472

LETTER OF MAP REVISION DETERMINATION DOCUMENT (CONTINUED)

FLOODING SOURCES AND REVISED REACHES

- Tributary Pajarito Arroyo (South A) - from the confluence with Pajarito Arroyo (South A) to approximately 6,400 feet upstream of the intersection with Tributary 1 Pajarito Arroyo (South A)
- Tributary 1 Pajarito Arroyo (South A) - from the confluence with Tributary Pajarito Arroyo (South A) to approximately 4,900 feet upstream of the intersection with Tributary Pajarito Arroyo (South A)
- Pajarito Arroyo South - from the confluence with Don Felipe Dam Detention Basin to approximately 6,250 feet upstream of the confluence with Tributary Pajarito Arroyo South
- Tributary Pajarito Arroyo South - from the confluence with Pajarito Arroyo South to approximately 5,900 feet upstream of the confluence with Pajarito Arroyo South
- Tributary 1 Pajarito Arroyo South - from the confluence with Pajarito Arroyo South to approximately 5,600 feet upstream of the confluence with Pajarito Arroyo South
- Pajarito Arroyo - from the confluence with Don Felipe Dam Detention Basin to approximately 3,560 feet upstream of the confluence of Tributary 1 Pajarito Arroyo North
- Tributary 1 Pajarito Arroyo North - from the confluence with Pajarito Arroyo to approximately 2,350 feet upstream of the confluence of Tributary 2 Pajarito Arroyo North
- Tributary 2 Pajarito Arroyo North - from the confluence with Tributary 1 Pajarito Arroyo North to approximately 3,130 feet upstream of the confluence with Tributary 1 Pajarito Arroyo North
- Tributary 3 Pajarito Arroyo North - from the confluence with Pajarito Arroyo to approximately 4,600 feet upstream of the confluence with Pajarito Arroyo
- Tributary 4 Pajarito Arroyo North - from the confluence with Pajarito Arroyo to approximately 3,200 feet upstream of the confluence with Pajarito Arroyo
- Pajarito Arroyo Diversion Channel - from the confluence with Pajarito Arroyo (South A) to approximately 6,500 feet upstream of the confluence of Tributary 2 Pajarito Arroyo Diversion Channel
- Tributary 2 Pajarito Arroyo Diversion Channel - from the confluence with Pajarito Arroyo Diversion Channel to approximately 5,200 feet upstream of the confluence with Pajarito Arroyo Diversion Channel
- Raymac Arroyo - from the upstream side of Raymac Dam Detention Basin to approximately 3,500 feet upstream of the confluence of Tributary 2 Raymac Arroyo
- Tributary 1 Raymac Arroyo - from the confluence with Raymac Arroyo to approximately 4,050 feet upstream of the confluence with Raymac Arroyo
- Tributary 2 Raymac Arroyo - from the confluence with Raymac Arroyo to approximately 3,350 feet upstream of the confluence with Raymac Arroyo
- Los Indios Arroyo - from the upstream side of Los Indios Pond to approximately 4,650 feet upstream of the confluence of Tributary 1 Los Indios Arroyo
- Tributary A Los Indios Arroyo - from the confluence with Los Indios Arroyo to approximately 3,300 feet upstream of the confluence of Tributary 2 Los Indios Arroyo
- Tributary 1 Los Indios Arroyo - from the confluence with Los Indios Arroyo to approximately 3,400 feet upstream of the confluence with Los Indios Arroyo
- Tributary 2 Los Indios Arroyo - from the confluence with Tributary A Los Indios Arroyo to approximately 4,100 feet upstream of the confluence with Tributary A Los Indios Arroyo
- Los Indios "A" Diversion Channel - from the upstream side of the Raymac Dam Detention Basin to the downstream side of Los Indios Pond

This determination is based on the flood data presently available. The enclosed documents provide additional information regarding this determination. If you have any questions about this document, please contact the FEMA Mapping and Insurance eXchange toll free at 1-877-336-2627 (1-877-FEMA MAP) or by letter addressed to the LOMC Clearinghouse, 3601 Eisenhower Avenue, Suite 500, Alexandria, VA 22304-6426. Additional Information about the NFIP is available on our website at <https://www.fema.gov/flood-insurance>.

Patrick "Rick" F. Sacbibit, P.E.
Chief, Engineering Services Branch
Risk Analysis, Planning, and Information Directorate | Resilience



Federal Emergency Management Agency

Washington, D.C. 20472

LETTER OF MAP REVISION DETERMINATION DOCUMENT (CONTINUED)

McCoy Channel A - from the confluence with McCoy Dam Detention Basin approximately 2,400 feet upstream of the confluence of McCoy Channel B

McCoy Channel B - from the confluence with McCoy Channel A to approximately 1,150 feet upstream with the confluence with McCoy Channel A

Earth Channel - from the confluence with Maplewood Pond to approximately 2,600 feet upstream of the confluence with Maplewood Pond

Gun Club Lateral - from the upstream side of Gun Club Road to approximately 700 feet downstream of Los Padillas Road

Isleta Drain - from the upstream side of Gun Club Road to the downstream side of Norment Road Southwest

Pajarito Diversion Sediment Pond - along Pajarito Arroyo Diversion Channel approximately 1,600 feet upstream of the confluence of Pajarito Arroyo (South A)

Don Felipe Dam Detention Basin - approximately 500 feet west of the intersection of Dona Sofia Road Southwest and Jennie Court

Los Indios Pond - centered approximately 450 feet northeast of the intersection of Douglas Road and Murchison Avenue

Raymac Dam Detention Basin- centered approximately 870 feet northeast of the intersection of Niese Drive and Niese Court

McCoy Dam Detention Basin- centered approximately 1,700 feet southeast of the intersection of Ray Lane and Poindexter Lane

Maplewood Pond- Centered approximately 650 feet southeast of the intersection of Maplewood Drive and Murchison Avenue

Gun Club Lateral Ponding - at the southern portion of Gun Club Lateral

This determination is based on the flood data presently available. The enclosed documents provide additional information regarding this determination. If you have any questions about this document, please contact the FEMA Mapping and Insurance eXchange toll free at 1-877-336-2627 (1-877-FEMA MAP) or by letter addressed to the LOMC Clearinghouse, 3601 Eisenhower Avenue, Suite 500, Alexandria, VA 22304-6426. Additional Information about the NFIP is available on our website at <https://www.fema.gov/flood-insurance>.

A handwritten signature in black ink, appearing to read "Rick F. Sacbibit".

Patrick "Rick" F. Sacbibit, P.E.
Chief, Engineering Services Branch
Risk Analysis, Planning, and Information Directorate | Resilience



Federal Emergency Management Agency

Washington, D.C. 20472

LETTER OF MAP REVISION DETERMINATION DOCUMENT (CONTINUED)

SUMMARY OF REVISIONS

Flooding Source	Effective Flooding	Revised Flooding	Increases	Decreases
Tributary Pajarito Arroyo (South A)	Zone A	Zone X (shaded)	YES	YES
Tributary 1 Pajarito Arroyo (South A)	Zone A	Zone X (shaded)	YES	YES
Pajarito Arroyo South	Zone A	Zone X (shaded)	YES	YES
Tributary Pajarito Arroyo South	Zone A	Zone X (shaded)	YES	YES
Tributary 1 Pajarito Arroyo South	Zone A	Zone X (shaded)	YES	YES
Pajarito Arroyo	Zone AO	Zone X (shaded)	YES	YES
	Zone A	Zone X (shaded)	YES	YES
	Depths	No Depths	NONE	YES
Tributary 1 Pajarito Arroyo North	Zone A	Zone X (shaded)	YES	YES
Tributary 2 Pajarito Arroyo North	Zone A	Zone X (shaded)	YES	YES
Tributary 3 Pajarito Arroyo North	Zone A	Zone X (shaded)	YES	YES
Tributary 4 Pajarito Arroyo North	Zone A	Zone X (shaded)	YES	YES
Pajarito Arroyo Diversion Channel	Zone A	Zone A	YES	YES
	Zone A	Zone X (shaded)	YES	YES
Tributary 2 Pajarito Arroyo Diversion Channel	Zone A	Zone A	YES	YES
	Zone A	Zone X (shaded)	YES	YES
Raymac Arroyo	Zone A	Zone A	YES	YES
	Zone A	Zone X (shaded)	YES	YES
Tributary 1 Raymac Arroyo	Zone A	Zone X (shaded)	YES	YES
	Zone A	Zone X (unshaded)	NONE	YES
Tributary 2 Raymac Arroyo	Zone A	Zone X (shaded)	YES	YES
	Zone A	Zone X (unshaded)	NONE	YES
Los Indios Arroyo	Zone AO	Zone X (shaded)	YES	YES
	Zone A	Zone X (shaded)	YES	YES
	Depths	No Depths	NONE	YES
Tributary A Los Indios Arroyo	Zone A	Zone X (shaded)	YES	YES
Tributary 1 Los Indios Arroyo	Zone A	Zone X (shaded)	YES	YES
Tributary 2 Los Indios Arroyo	Zone A	Zone X (shaded)	YES	YES
Los Indios "A" Diversion Channel	Zone A	Zone A	YES	YES

This determination is based on the flood data presently available. The enclosed documents provide additional information regarding this determination. If you have any questions about this document, please contact the FEMA Mapping and Insurance eXchange toll free at 1-877-336-2627 (1-877-FEMA MAP) or by letter addressed to the LOMC Clearinghouse, 3601 Eisenhower Avenue, Suite 500, Alexandria, VA 22304-6426. Additional Information about the NFIP is available on our website at <https://www.fema.gov/flood-insurance>.

Patrick "Rick" F. Sacbbit, P.E.
Chief, Engineering Services Branch
Risk Analysis, Planning, and Information Directorate | Resilience



Federal Emergency Management Agency

Washington, D.C. 20472

LETTER OF MAP REVISION DETERMINATION DOCUMENT (CONTINUED)

SUMMARY OF REVISIONS

Flooding Source	Effective Flooding	Revised Flooding	Increases	Decreases
McCoy Channel A	Zone A	Zone A	YES	YES
	Zone A	Zone X (shaded)	YES	YES
McCoy Channel B	Zone X (shaded)	Zone A	YES	NONE
Earth Channel	Zone AO	Zone X (shaded)	YES	YES
	Depths	No Depths	NONE	YES
	Zone AO	Zone X (unshaded)	NONE	YES
Gun Club Lateral	Zone X (unshaded)	Zone A	YES	NONE
Isleta Drain	Zone X (unshaded)	Zone A	YES	NONE
Pajarito Diversion Sediment Pond	Zone AE	Zone AE	NONE	YES
	BFEs*	BFEs	NONE	YES
Don Felipe Dam Detention Basin	Zone AE	Zone AE	YES	YES
	Zone A	Zone AE	YES	YES
	No BFEs	BFEs	YES	NONE
	Zone AO	Zone AE	YES	YES
	Depths	BFEs	YES	NONE
Los Indios Pond	Zone AE	Zone AE	YES	YES
Raymac Dam Detention Basin	Zone AE	Zone AE	YES	YES
	BFEs	BFEs	NONE	YES
McCoy Dam Detention Basin	Zone X (unshaded)	Zone AE	YES	YES
	No BFEs	BFEs	YES	NONE
Maplewood Pond	Zone AO	Zone AE	YES	YES
	Depths	BFEs	YES	NONE
Gun Club Lateral Ponding	Zone A	Zone A	YES	YES
	Zone AO	Zone X (shaded)	YES	YES
	Zone A	Zone X (shaded)	YES	YES
	Depths	No Depths	NONE	YES

This determination is based on the flood data presently available. The enclosed documents provide additional information regarding this determination. If you have any questions about this document, please contact the FEMA Mapping and Insurance eXchange toll free at 1-877-336-2627 (1-877-FEMA MAP) or by letter addressed to the LOMC Clearinghouse, 3601 Eisenhower Avenue, Suite 500, Alexandria, VA 22304-6426. Additional Information about the NFIP is available on our website at <https://www.fema.gov/flood-insurance>.

Patrick "Rick" F. Sacbibit, P.E.
Chief, Engineering Services Branch
Risk Analysis, Planning, and Information Directorate | Resilience



Federal Emergency Management Agency

Washington, D.C. 20472

LETTER OF MAP REVISION DETERMINATION DOCUMENT (CONTINUED)

COMMUNITY INFORMATION

APPLICABLE NFIP REGULATIONS/COMMUNITY OBLIGATION

We have made this determination pursuant to Section 206 of the Flood Disaster Protection Act of 1973 (P.L. 93-234) and in accordance with the National Flood Insurance Act of 1968, as amended (Title XIII of the Housing and Urban Development Act of 1968, P.L. 90-448), 42 U.S.C. 4001-4128, and 44 CFR Part 65. Pursuant to Section 1361 of the National Flood Insurance Act of 1968, as amended, communities participating in the NFIP are required to adopt and enforce floodplain management regulations that meet or exceed NFIP criteria. These criteria, including adoption of the FIS report and FIRM, and the modifications made by this LOMR, are the minimum requirements for continued NFIP participation and do not supersede more stringent State/Commonwealth or local requirements to which the regulations apply.

NFIP regulations Subparagraph 60.3(b)(7) requires communities to ensure that the flood-carrying capacity within the altered or relocated portion of any watercourse is maintained. This provision is incorporated into your community's existing floodplain management ordinances; therefore, responsibility for maintenance of the altered or relocated watercourse, including any related appurtenances such as bridges, culverts, and other drainage structures, rests with your community. We may request that your community submit a description and schedule of maintenance activities necessary to ensure this requirement.

COMMUNITY REMINDERS

We based this determination on the 1-percent-annual-chance (base) discharges computed in the submitted hydrologic model. Future development of projects upstream could cause increased discharges, which could cause increased flood hazards. A comprehensive restudy of your community's flood hazards would consider the cumulative effects of development on discharges and could, therefore, indicate that greater flood hazards exist in this area.

Your community must regulate all proposed floodplain development and ensure that permits required by Federal and/or State/Commonwealth law have been obtained. State/Commonwealth or community officials, based on knowledge of local conditions and in the interest of safety, may set higher standards for construction or may limit development in floodplain areas. If your State/Commonwealth or community has adopted more restrictive or comprehensive floodplain management criteria, those criteria take precedence over the minimum NFIP requirements.

We will not print and distribute this LOMR to primary users, such as local insurance agents or mortgage lenders; instead, the community will serve as a repository for the new data. We encourage you to disseminate the information in this LOMR by preparing a news release for publication in your community's newspaper that describes the revision and explains how your community will provide the data and help interpret the NFIP maps. In that way, interested persons, such as property owners, insurance agents, and mortgage lenders, can benefit from the information.

This determination is based on the flood data presently available. The enclosed documents provide additional information regarding this determination. If you have any questions about this document, please contact the FEMA Mapping and Insurance eXchange toll free at 1-877-336-2627 (1-877-FEMA MAP) or by letter addressed to the LOMC Clearinghouse, 3601 Eisenhower Avenue, Suite 500, Alexandria, VA 22304-6426. Additional Information about the NFIP is available on our website at <https://www.fema.gov/flood-insurance>.

Patrick "Rick" F. Sacbibit, P.E.
Chief, Engineering Services Branch

Risk Analysis, Planning, and Information Directorate | Resilience

23-06-1906P

102-I-A-C



Federal Emergency Management Agency

Washington, D.C. 20472

LETTER OF MAP REVISION DETERMINATION DOCUMENT (CONTINUED)

This revision has met our criteria for removing an area from the base floodplain to reflect the placement of fill. However, we encourage you to require that the lowest adjacent grade and lowest floor (including basement) of any structure placed within the subject area be elevated to or above the Base (1-percent-annual-chance) Flood Elevation.

We have designated a Consultation Coordination Officer (CCO) to assist your community. The CCO will be the primary liaison between your community and FEMA. For information regarding your CCO, please contact:

Roosevelt Grant
Director, Mitigation Division
Federal Emergency Management Agency, Region VI
800 North Loop 288
Denton, TX 76209
(940) 898-5127

STATUS OF THE COMMUNITY NFIP MAPS

We will not physically revise and republish the FIRM and FIS report for your community to reflect the modifications made by this LOMR at this time. When changes to the previously cited FIRM panels and FIS report warrant physical revision and republication in the future, we will incorporate the modifications made by this LOMR at that time.

This determination is based on the flood data presently available. The enclosed documents provide additional information regarding this determination. If you have any questions about this document, please contact the FEMA Mapping and Insurance eXchange toll free at 1-877-336-2627 (1-877-FEMA MAP) or by letter addressed to the LOMC Clearinghouse, 3601 Eisenhower Avenue, Suite 500, Alexandria, VA 22304-6426. Additional Information about the NFIP is available on our website at <https://www.fema.gov/flood-insurance>.

A handwritten signature in black ink, appearing to read "Rick Sacbibit".

Patrick "Rick" F. Sacbibit, P.E.
Chief, Engineering Services Branch
Risk Analysis, Planning, and Information Directorate | Resilience



Federal Emergency Management Agency
Washington, D.C. 20472

**LETTER OF MAP REVISION
DETERMINATION DOCUMENT (CONTINUED)**

PUBLIC NOTIFICATION OF REVISION

A notice of changes will be published in the *Federal Register*. This information also will be published in your local newspaper on or about the dates listed below, and through FEMA's Flood Hazard Mapping website at https://www.floodmaps.fema.gov/fhm/bfe_status/bfe_main.asp


LOCAL NEWSPAPER

Name: *Albuquerque Journal*

Dates: March 12, 2025 and March 19, 2025

Within 90 days of the second publication in the local newspaper, any interested party may request that we reconsider this determination. Any request for reconsideration must be based on scientific or technical data. Therefore, this letter will be effective only after the 90-day appeal period has elapsed and we have resolved any appeals that we receive during this appeal period. Until this LOMR is effective, the revised flood hazard determination presented in this LOMR may be changed.

This determination is based on the flood data presently available. The enclosed documents provide additional information regarding this determination. If you have any questions about this document, please contact the FEMA Mapping and Insurance eXchange toll free at 1-877-336-2627 (1-877-FEMA MAP) or by letter addressed to the LOMC Clearinghouse, 3601 Eisenhower Avenue, Suite 500, Alexandria, VA 22304-6426. Additional Information about the NFIP is available on our website at <https://www.fema.gov/flood-insurance>.


Patrick "Rick" F. Sacbibit, P.E.

Chief, Engineering Services Branch

Risk Analysis, Planning, and Information Directorate | Resilience

23-06-1906P

102-I-A-C

Table 12 - Summary of Discharges for Shallow Flooding Areas (Continued)

<u>Flooding Source and Location</u>	<u>Drainage Area (square miles)</u>	<u>Peak Discharges (cfs)</u>			
		<u>10-Percent- Annual-Chance</u>	<u>2-Percent- Annual-Chance</u>	<u>1-Percent- Annual-Chance</u>	<u>0.2-Percent- Annual-Chance</u>
La Rinconada Arroyo At outfall to gravel pit	1.98	*	*	814	*
Los Indos Arroyo "A"					
Downstream from Raymac Dam	2.48	*	*	25	*
Upstream of Raymac Dam	2.48	*	*	1,194	*
At Gun Club Lateral	1.29	*	*	173	*
McKnight Storm Drain At Eubank Avenue	0.18	*	*	254 †	*
At Embudo Arroyo	0.21	*	*	354 †	*
Middle Branch of the Piedras Marcadas Arroyo					
Piedras Marcadas Dam outflow	5.62	*	*	80	*
Piedras Marcadas Dam inflow	5.62	*	*	2,375	*
Approximately 1,300 feet upstream of Piedras Marcadas Dam	4.86	*	*	1,786	*
North Arroyo de Domingo Baca					
At Wyoming Boulevard	3.79	*	*	658	*
Approximately 950 feet upstream of Barstow Street	3.42	*	*	538	*
At Holbrook Street	2.79	*	*	220	*
At inflow to Upper Dam	2.68	*	*	2,794	*
At Tramway Boulevard	0.89	*	*	1,080	*

REVISED DATA

*Data not available

† Discharge value for both Storm Drain and Street Flooding

REVISED TO
REFLECT LOMR
EFFECTIVE: July 17, 2025

Table 12 - Summary of Discharges for Shallow Flooding Areas (Continued)

<u>Flooding Source and Location</u>	<u>Drainage Area (square miles)</u>	<u>Peak Discharges (cfs)</u>			
		<u>10-Percent- Annual-Chance</u>	<u>2-Percent- Annual-Chance</u>	<u>1-Percent- Annual-Chance</u>	<u>0.2-Percent- Annual-Chance</u>
Pajarito Arroyo - North					
Downstream from Don Felipe Dam	3.26	*	*	25	*
Upstream of Don Felipe Dam	3.26	*	*	1,706	*
Piedra Lisa Channel ¹					
At confluence with Embudo Channel	2	*	*	2,774	*
At Juan Tabo Boulevard	2	*	*	2,145	*
At the confluence of South Glenwood Hills Channel	2	*	*	1,065	*
At Tramway Boulevard	2	*	*	1,011	*
Sacate Blanco Arroyo ¹					
At confluence with Hubbell Lake Diversion Channel	0.43	*	*	238 ³	*
South Domingo Baca Arroyo					
At Holbrook Street	5.52	*	*	811	*
At Browning Street	4.77	*	*	200	*
Inflow into dam	4.69	*	*	3,534	*
At Tramway Boulevard	3.29	*	*	2,352	*
South El Camino Arroyo					
At Interstate Highway 25	3.17	*	*	2,053	*
At Ventura Street ⁴	2.59	*	*	3,301	*
At Tramway Boulevard ⁴	1.85	*	*	2,853	*

REVISED DATA

¹Reference 6

²Drainage areas not applicable because of interbasin transfer via roads and storm sewers

³By regression analysis

⁴Reference 8

*Data not available

REVISED TO
REFLECT LOMR
EFFECTIVE: July 17, 2025

Table 13 - Summary of Stillwater Elevations (Continued)

Area	Pond Invert Elevation (feet NAVD ¹)	Water Surface Elevations (feet NAVD ¹)			
		10-Percent-Annual-Chance	2-Percent-Annual-Chance	1-Percent-Annual-Chance	0.2-Percent-Annual-Chance
Detention Basin 17	*	*	*	5,140.0	*
Don Felipe Dam Detention Basin	*	*	*	4,969.0	*
East Amole Surge Pond	*	*	*	5525.0	*
Gonzales Pond	4990.3	*	*	5007.8	*
Interim Pond 1	*	*	*	5489.0	*
Interim Pond 2	*	*	*	5415.0	*
Interim Pond 3	*	*	*	5374.0	*
Interim Pond 4	*	*	*	5333.0	*
Hubbell Lake Detention Area	*	*	*	4,928.0	*
Juan Tabo Dam	*	*	*	5,771.0	*
Kirtland Detention Pond	*	*	*	5,359.0	*
Lower North Baca Dam	*	*	*	5,320.0	*
Mariposa Detention Facility	*	*	*	5,118.0	*
North Domingo Baca Dam	5,721.4	5,740.3	5,748	5,750.8	5,753.3
North Pond	5,204.2	*	*	5,217.8	*
Odelia Park Dam	*	*	*	5,025.0	*
Pajarito Diversion Sediment Pond	*	*	*	5,000.0	*
Piedras Marcadas	*	*	*	5,032.0	*

¹ North American Vertical Datum of 1988

* Data not available

REVISED DATA

REVISED TO
REFLECT LOMR
EFFECTIVE: July 17, 2025

Table 13 - Summary of Stillwater Elevations (Continued)

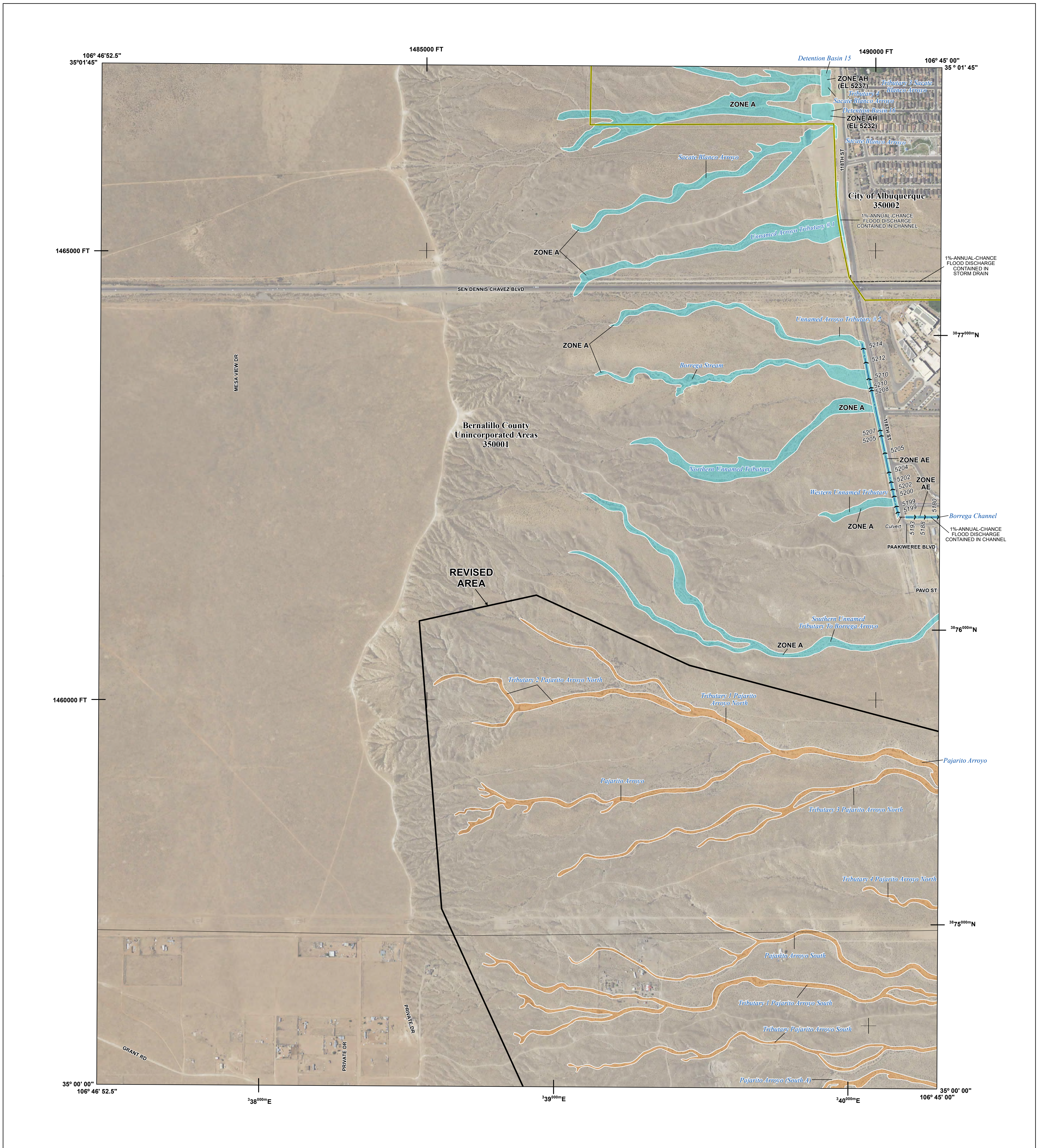
REVISIED DATA	Area	Water Surface Elevations (feet NAVD ¹)				
		<u>Pond Invert Elevation (feet NAVD¹)</u>	<u>10-Percent- Annual-Chance</u>	<u>2-Percent- Annual-Chance</u>	<u>1-Percent- Annual-Chance</u>	<u>0.2-Percent- Annual- Chance</u>
	Raymac Dam Detention Basin	*	*	*	4,960.0	*
	Retention Pond	*	*	*	5,233.0	*
	South Domingo Baca Dam	5,878.8	5,900.8	5,911.3	5,915.4	5,921.4
	South Pond	5,201.0	*	*	5,211.2	*
	Unnamed Pond					
	Area bounded by Sunset Gardens Road to the north, 106 th Street to the east and Eucariz Avenue to the south	*	*	*	5,248.7	*
	Unnamed Pond					
	Area bounded by Duke Avenue to the north and Eucariz Avenue to the south	*	*	*	5,230.9	*
	Unnamed Ponding Area					
	Generally located along El Camino Arroyo at Beverly Hills Avenue	*	*	*	5,324.0	*
	Unnamed Ponding Area					
	Generally located south of Acoma Road, north of Southern Avenue SE, and west of Britt Street	*	*	*	5,483.7	*
	Los Indios Pond	*	*	*	5,034.0	*
	McCoy Dam Detention Basin	*	*	*	4,941.0	*
	Maplewood Pond	*	*	*	4,937.0	*

REVISIED DATA

¹North American Vertical Datum of 1988

* Data not available

REVISED TO
REFLECT LOMR
EFFECTIVE: July 17, 2025



FLOOD HAZARD INFORMATION

SEE FIS REPORT FOR DETAILED LEGEND AND INDEX MAP FOR FIRM PANEL LAYOUT
 THE INFORMATION DEPICTED ON THIS MAP AND SUPPORTING DOCUMENTATION ARE ALSO AVAILABLE IN DIGITAL FORMAT AT [HTTPS://MSC.FEMA.GOV](https://MSC.FEMA.GOV)

SPECIAL FLOOD HAZARD AREAS		Without Base Flood Elevation (BFE) Zone A, V, A99
		With BFE or Depth Zone AE, AO, AH, VE, AR
		Regulatory Floodway
OTHER AREAS OF FLOOD HAZARD		0.2% Annual Chance Flood Hazard, Areas of 1% annual chance flood with average depth less than one foot or with drainage areas of less than one square mile Zone X
		Future Conditions 1% Annual Chance Flood Hazard Zone X
		Area with Reduced Flood Risk due to Levee See Notes. Zone X
		Area with Flood Risk due to Levee Zone D
OTHER AREAS		Area of Minimal Flood Hazard Zone X
		Area of Undetermined Flood Hazard Zone D
GENERAL STRUCTURES		Channel, Culvert, or Storm Sewer
		Levee, Dike, or Floodwall
		Cross Sections with 1% Annual Chance Water Surface Elevation
		Coastal Transect
		Coastal Transect Baseline
		Profile Baseline
		Hydrographic Feature
OTHER FEATURES		Base Flood Elevation Line (BFE)
		Limit of Study
		Jurisdiction Boundary

NOTES TO USERS

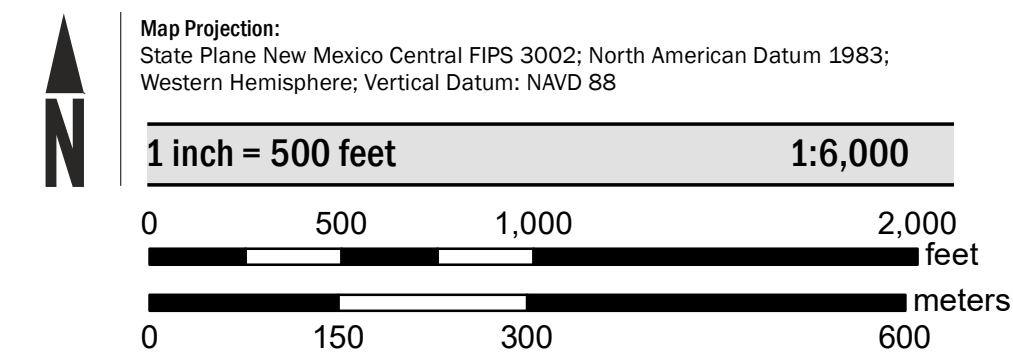
For information and questions about this Flood Insurance Rate Map (FIRM), available products associated with this FIRM, including historic versions, the current map date for each FIRM panel, how to order products, or the National Flood Insurance Program (NFIP) in general, please call the FEMA Map Information eXchange at 1-877-FEMA-MAP (1-877-336-2627) or visit the FEMA Flood Map Service Center website at msc.fema.gov. Available products may include previously issued Letters of Map Change, a Flood Insurance Study Report, and/or digital versions of this map. Many of these products can be ordered or obtained directly from the website.

Communities annexing land on adjacent FIRM panels must obtain a current copy of the adjacent panel as well as the current FIRM Index. These may be ordered directly from the Flood Map Service Center at the number listed above.

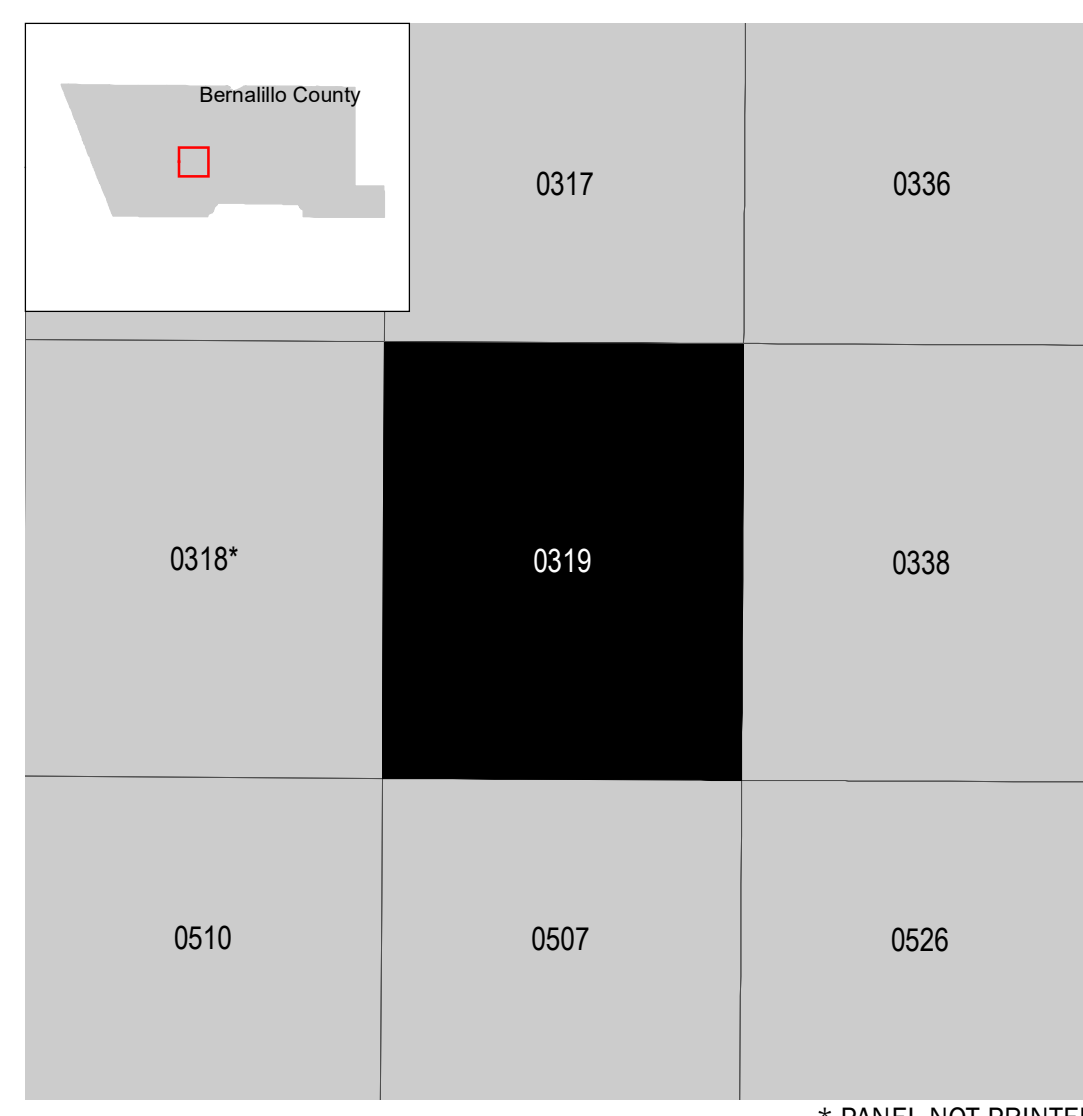
For community and countywide map dates refer to the Flood Insurance Study Report for this jurisdiction. To determine if flood insurance is available in this community, contact your insurance agent or call the National Flood Insurance Program at 1-800-638-6620.

NOTE: BASEMAP IMAGERY DATED 2022 WAS OBTAINED FROM NAIP.

SCALE



PANEL LOCATOR



National Flood Insurance Program

NATIONAL FLOOD INSURANCE PROGRAM
 FLOOD INSURANCE RATE MAP

BERNALILLO COUNTY, NEW MEXICO
 and Incorporated Areas

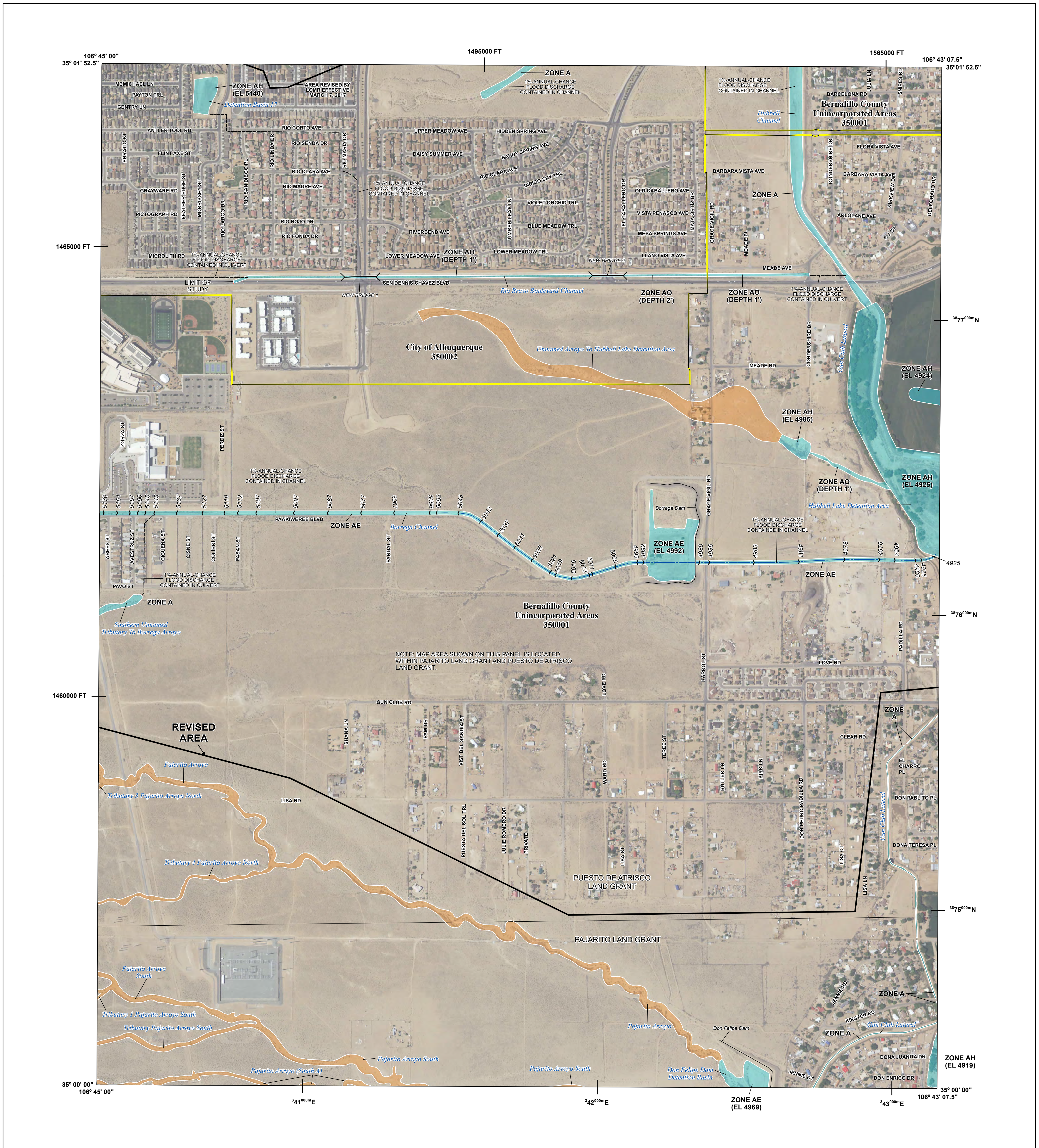
PANEL 319 OF 825

Panel Contains:

COMMUNITY	NUMBER	PANEL	SUFFIX
ALBUQUERQUE, CITY OF	350002	0319	H
BERNALILLO COUNTY, UNINCORPORATED AREAS 350001	0319	H	

REVISED TO REFLECT LOMR EFFECTIVE: July 17, 2025

VERSION NUMBER 2.1.3.0
 MAP NUMBER 35001C0319H
 MAP REVISED AUGUST 16, 2012



FLOOD HAZARD INFORMATION

SEE FIS REPORT FOR DETAILED LEGEND AND INDEX MAP FOR FIRM PANEL LAYOUT
THE INFORMATION DEPICTED ON THIS MAP AND SUPPORTING DOCUMENTATION ARE ALSO AVAILABLE IN DIGITAL FORMAT AT [HTTPS://MSC.FEMA.GOV](https://MSC.FEMA.GOV)

	Without Base Flood Elevation (BFE) Zone A, V, A99
	With BFE or Depth Zone AE, AO, AH, VE, AR
	Regulatory Floodway
	0.2% Annual Chance Flood Hazard, Areas of 1% annual chance flood with average depth less than one foot or with drainage areas of less than one square mile Zone X
	Future Conditions 1% Annual Chance Flood Hazard Zone X
	Area with Reduced Flood Risk due to Levee See Notes. Zone X
	Area with Flood Risk due to Levee Zone D
	Area of Minimal Flood Hazard Zone X
	Area of Undetermined Flood Hazard Zone D
	Channel, Culvert, or Storm Sewer
	Levee, Dike, or Floodwall
	Cross Sections with 1% Annual Chance Water Surface Elevation
	Coastal Transect
	Coastal Transect Baseline
	Profile Baseline
	Hydrographic Feature
	Base Flood Elevation Line (BFE)
	Limit of Study
	Jurisdiction Boundary

NOTES TO USERS

For information and questions about this Flood Insurance Rate Map (FIRM), available products associated with this FIRM, including historic versions, the current map date for each FIRM panel, how to order products, or the National Flood Insurance Program (NFIP) in general, please call the FEMA Map Information eXchange at 1-877-FEMA-MAP (1-877-336-2627) or visit the FEMA Flood Map Service Center website at msc.fema.gov. Available products may include previously issued Letters of Map Change, a Flood Insurance Study Report, and/or digital versions of this map. Many of these products can be ordered or obtained directly from the website.

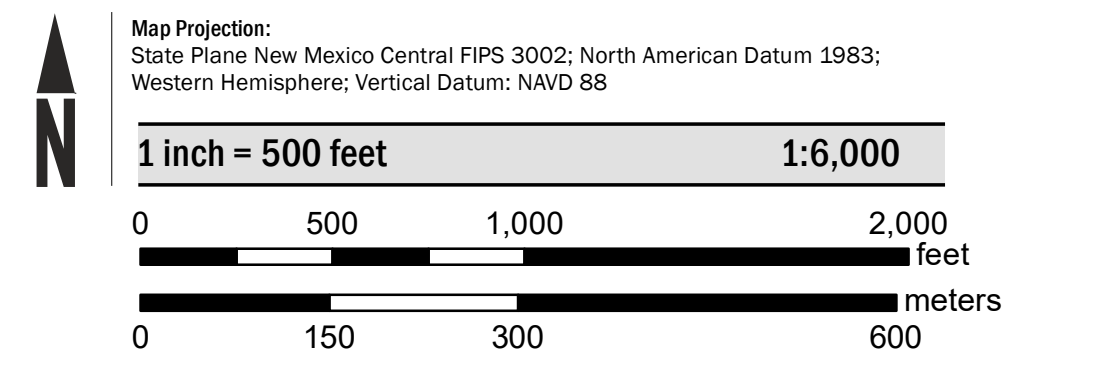
Communities annexing land on adjacent FIRM panels must obtain a current copy of the adjacent panel as well as the current FIRM Index. These may be ordered directly from the Flood Map Service Center at the number listed above.

For community and countywide map dates refer to the Flood Insurance Study Report for this jurisdiction.

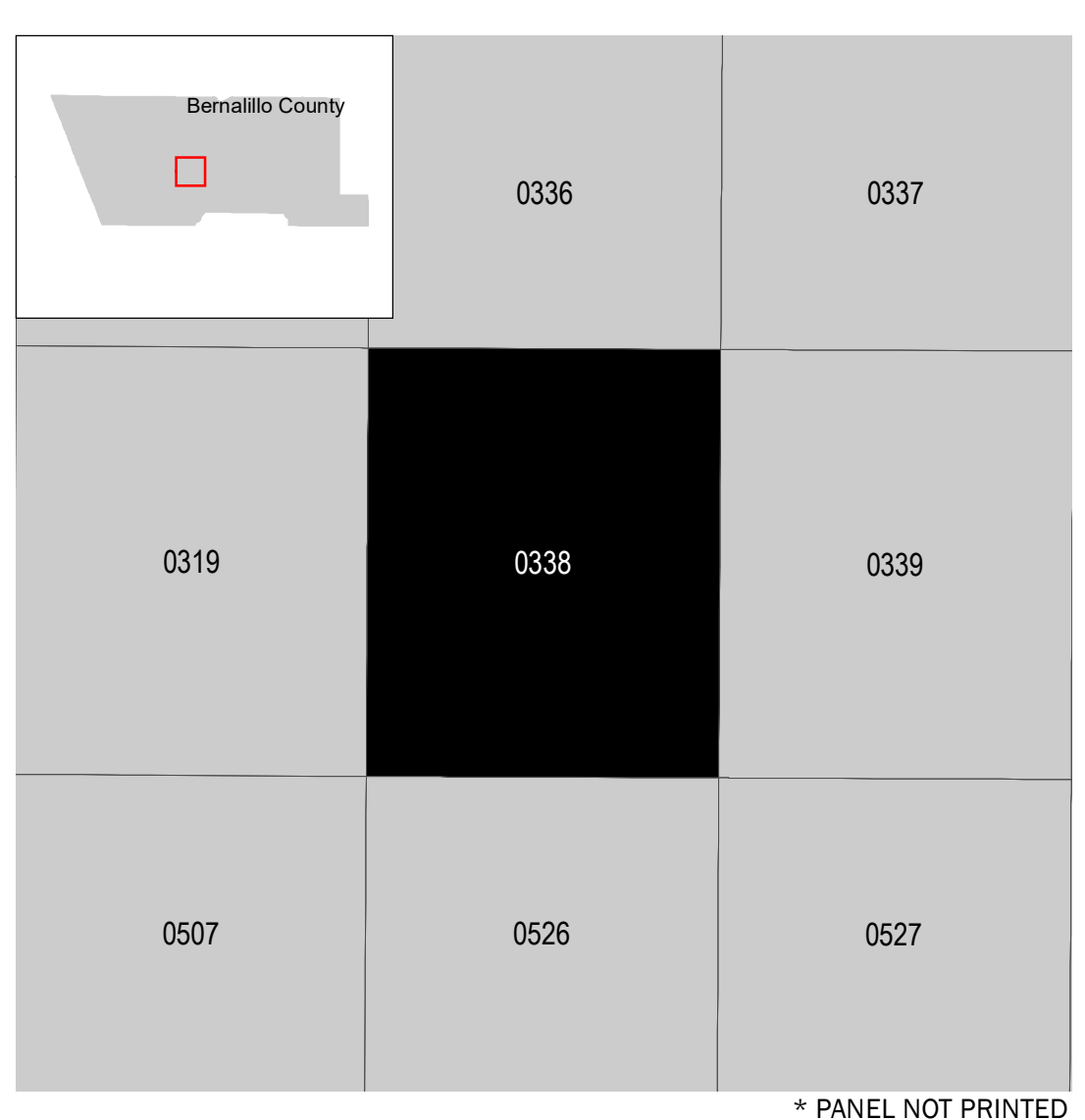
To determine if flood insurance is available in this community, contact your insurance agent or call the National Flood Insurance Program at 1-800-638-6620.

NOTE: BASEMAP IMAGERY DATED 2022 WAS OBTAINED FROM NAIP.

SCALE



PANEL LOCATOR



National Flood Insurance Program

NATIONAL FLOOD INSURANCE PROGRAM
FLOOD INSURANCE RATE MAP

BERNALILLO COUNTY, NEW MEXICO
 and Incorporated Areas

PANEL 338 OF 825

Panel Contains:

COMMUNITY	NUMBER	PANEL	SUFFIX
ALBUQUERQUE, CITY OF	350002	0338	H
BERNALILLO COUNTY, UNINCORPORATED AREAS 350001		0338	H

REVISED TO REFLECT LOMR EFFECTIVE July 17, 2025

VERSION NUMBER 2.1.3.0
 MAP NUMBER 35001C0338H
 MAP REVISED AUGUST 16, 2012

NOTE: MAP AREA SHOWN ON THIS PANEL IS LOCATED WITHIN PAJARITO LAND GRANT AND PUESTO DE ATRISCO LAND GRANT.

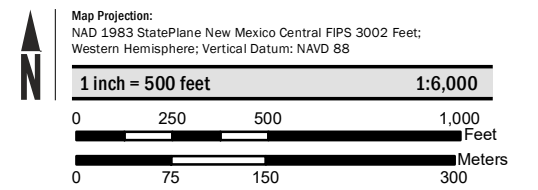
SPECIAL FLOOD HAZARD AREAS

- Without Base Flood Elevation (BFE) Zone A, V, A99
- With BFE or Depth Zone AE, AO, AH, VE, AR
- Regulatory Floodway

OTHER AREAS OF FLOOD HAZARD

- 0.2% Annual Chance Flood Hazard, Areas of 1% annual chance flood with average depth less than one foot or with drainage areas of less than one square mile Zone X
- Future Conditions 1% Annual Chance Flood Hazard Zone X
- Area with Reduced Flood Risk due to Levee See Notes. Zone X

SCALE NOTE: BASEMAP IMAGERY DATED 2022 WAS OBTAINED FROM NAIP.



FEMA National Flood Insurance Program

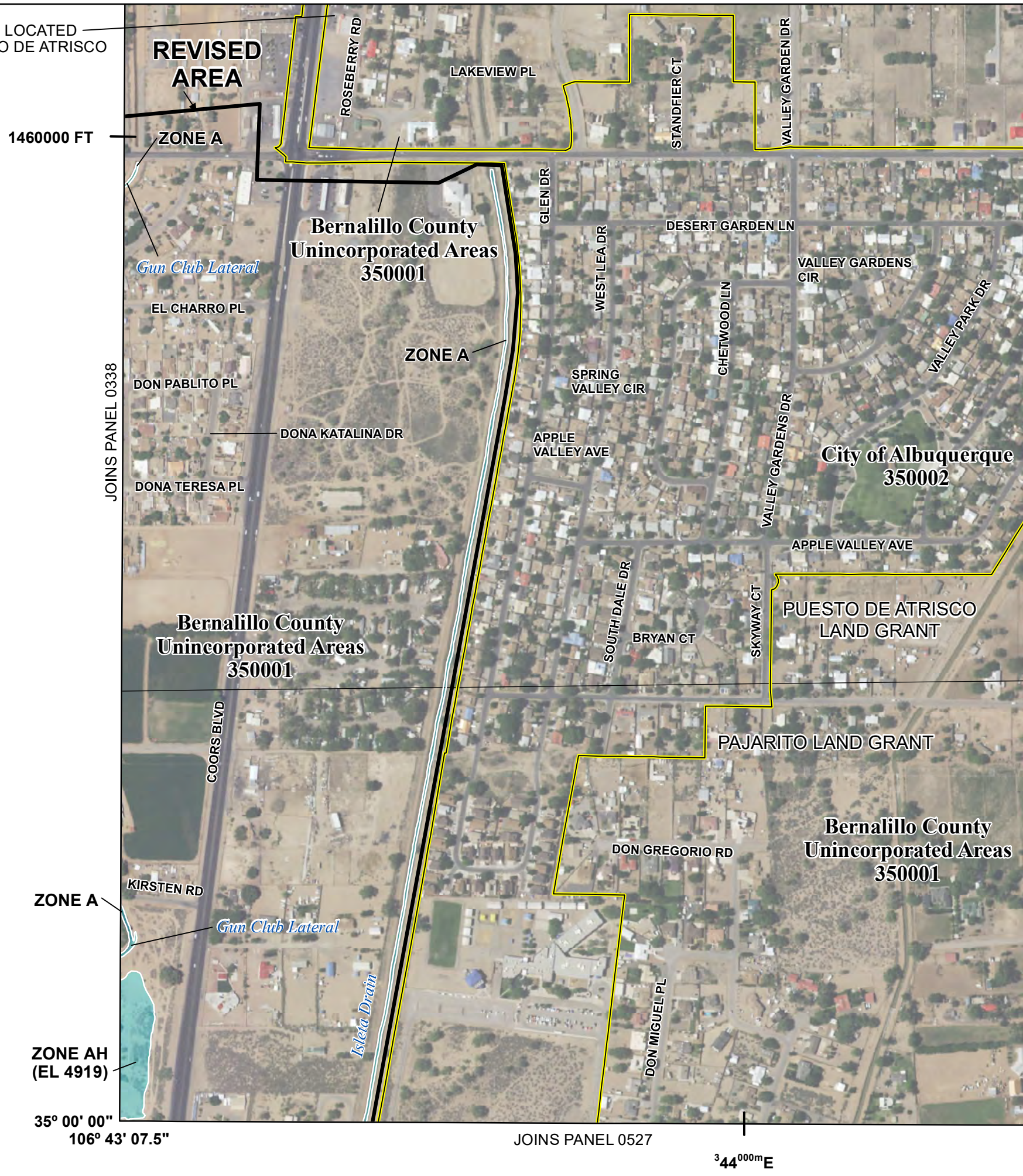
NATIONAL FLOOD INSURANCE PROGRAM
FLOOD INSURANCE RATE MAP
BERNALILLO COUNTY, NEW MEXICO
and Incorporated Areas
PANEL 339 OF 825

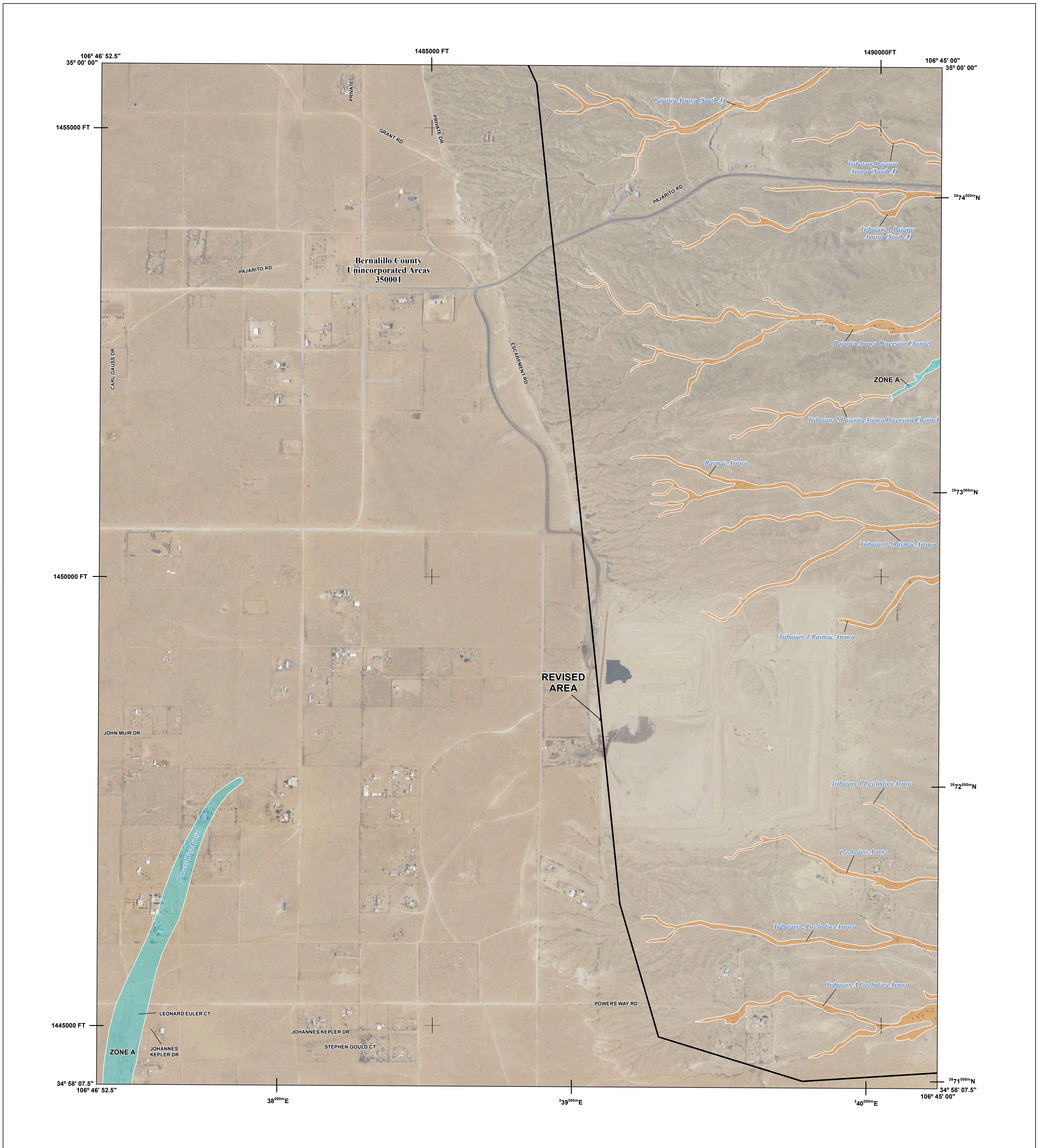
Panel Contains:

COMMUNITY	NUMBER	PANEL	SUFFIX
ALBUQUERQUE, CITY OF	350002	0339	H
BERNALILLO COUNTY, UNINCORPORATED AREAS	350001	0339	H

REVISADO TO REFLECT LOMR EFFECTIVE: July 17, 2025

VERSION NUMBER 2.1.3.0
MAP NUMBER 35001C0339H
MAP REVISED AUGUST 16, 2012





FLOOD HAZARD INFORMATION

SEE FIS REPORT FOR DETAILED LEGEND AND INDEX MAP FOR FIRM PANEL LAYOUT
THE INFORMATION DEPICTED ON THIS MAP AND SUPPORTING DOCUMENTATION ARE ALSO AVAILABLE IN DIGITAL FORMAT AT [HTTPS://MSC.FEMA.GOV](https://MSC.FEMA.GOV)

SPECIAL FLOOD HAZARD AREAS		Without Base Flood Elevation (BFE) Zone A, V, A99
		With BFE or Depth Zone AE, AO, AH, VE, AR
OTHER AREAS OF FLOOD HAZARD		Regulatory Floodway
		0.2% Annual Chance Flood Hazard, Areas of 1% annual chance flood with average depth less than one foot or with drainage areas of less than one square mile Zone X
		Future Conditions 1% Annual Chance Flood Hazard Zone X
		Area with Reduced Flood Risk due to Levee See Notes. Zone X
OTHER AREAS		Area with Flood Risk due to Levee Zone D
		Area of Minimal Flood Hazard Zone X
GENERAL STRUCTURES		Area of Undetermined Flood Hazard Zone D
		Channel, Culvert, or Storm Sewer
OTHER FEATURES		Levee, Dike, or Floodwall
		Cross Sections with 1% Annual Chance Water Surface Elevation
OTHER FEATURES		18.2
		17.5
		Coastal Transect
		Coastal Transect Baseline
		Profile Baseline
OTHER FEATURES		Hydrographic Feature
		Base Flood Elevation Line (BFE)
		Limit of Study
OTHER FEATURES		Jurisdiction Boundary

NOTES TO USERS

For information and questions about this Flood Insurance Rate Map (FIRM), available products associated with this FIRM, including historic versions, the current map date for each FIRM panel, how to order products, or the National Flood Insurance Program (NFIP) in general, please call the FEMA Map Information eXchange at 1-877-FEMA-MAP (1-877-336-2627) or visit the FEMA Flood Map Service Center website at msc.fema.gov. Available products may include previously issued Letters of Map Change, a Flood Insurance Study Report, and/or digital versions of this map. Many of these products can be ordered or obtained directly from the website.

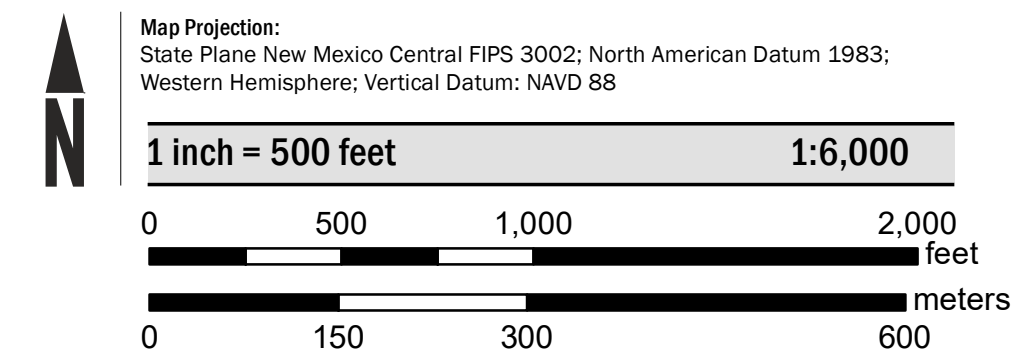
Communities annexing land on adjacent FIRM panels must obtain a current copy of the adjacent panel as well as the current FIRM Index. These may be ordered directly from the Flood Map Service Center at the number listed above.

For community and countywide map dates refer to the Flood Insurance Study Report for this jurisdiction.

To determine if flood insurance is available in this community, contact your insurance agent or call the National Flood Insurance Program at 1-800-638-6620.

NOTE: BASEMAP IMAGERY DATED 2022 WAS OBTAINED FROM NAIP.

SCALE



PANEL LOCATOR



National Flood Insurance Program

NATIONAL FLOOD INSURANCE PROGRAM
FLOOD INSURANCE RATE MAP

BERNALILLO COUNTY, NEW MEXICO
 and Incorporated Areas

PANEL 507 OF 825

Panel Contains:

COMMUNITY	NUMBER	PANEL	SUFFIX
BERNALILLO COUNTY, UNINCORPORATED AREAS	350001	0507	G

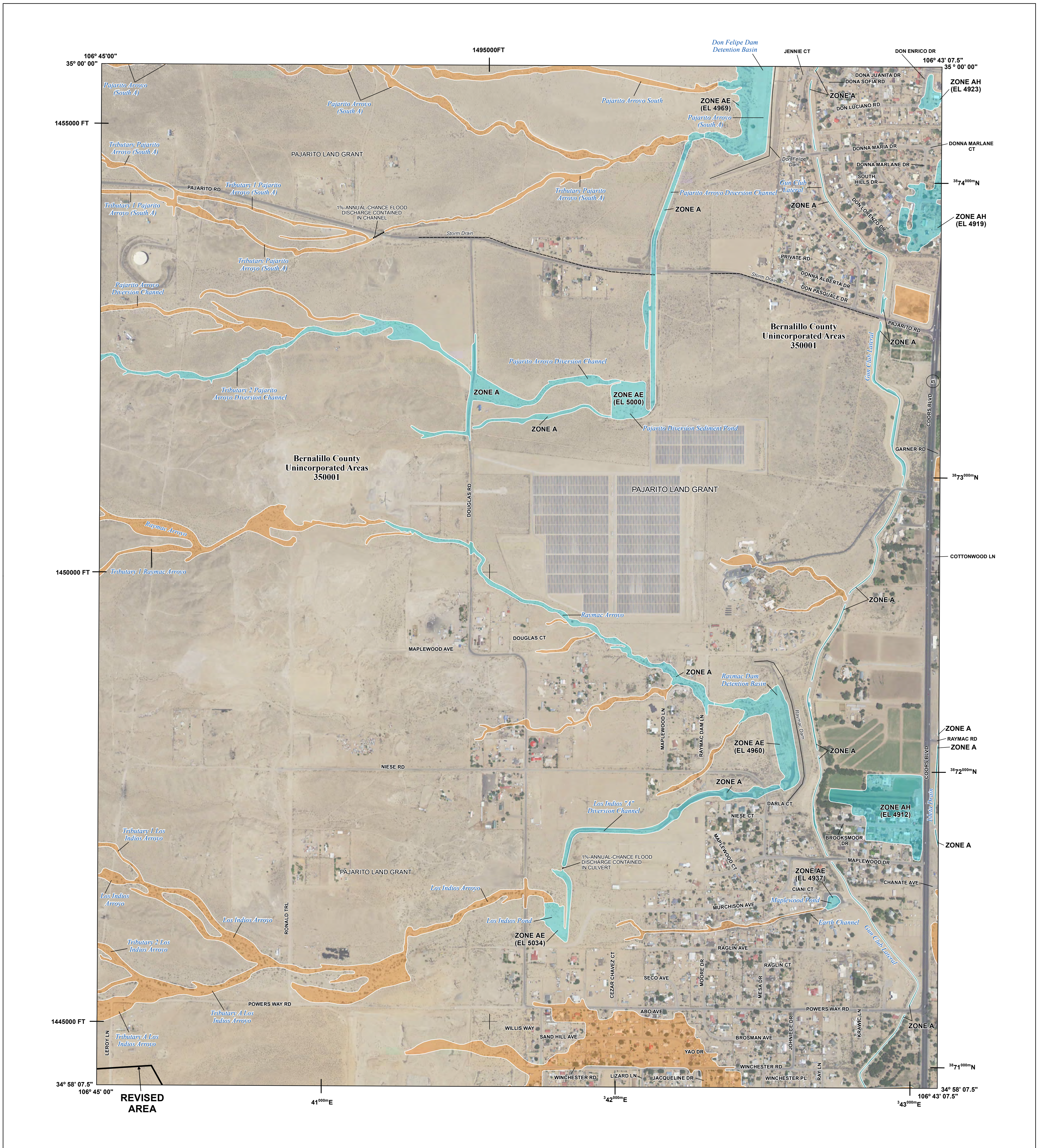
REVISED TO REFLECT LOMR EFFECTIVE: July 17, 2025

FEMA

VERSION NUMBER
2.1.3.0

MAP NUMBER
35001C0507G

MAP REVISED
SEPTEMBER 26, 2008



FLOOD HAZARD INFORMATION

SEE FIS REPORT FOR DETAILED LEGEND AND INDEX MAP FOR FIRM PANEL LAYOUT
THE INFORMATION DEPICTED ON THIS MAP AND SUPPORTING DOCUMENTATION ARE ALSO AVAILABLE IN DIGITAL FORMAT AT [HTTPS://MSC.FEMA.GOV](https://MSC.FEMA.GOV)

	Without Base Flood Elevation (BFE) Zone A, V, A99
	With BFE or Depth Zone AE, AO, AH, VE, AR
	Regulatory Floodway
	0.2% Annual Chance Flood Hazard, Areas of 1% annual chance flood with average depth less than one foot or with drainage areas of less than one square mile Zone X
	Future Conditions 1% Annual Chance Flood Hazard Zone X
	Area with Reduced Flood Risk due to Levee See Notes. Zone X
	Area with Flood Risk due to Levee Zone D
	Area of Minimal Flood Hazard Zone X
	Area of Undetermined Flood Hazard Zone D
	Channel, Culvert, or Storm Sewer
	Levee, Dike, or Floodwall
	Cross Sections with 1% Annual Chance Water Surface Elevation
	Coastal Transect
	Coastal Transect Baseline
	Profile Baseline
	Hydrographic Feature
	Base Flood Elevation Line (BFE)
	Limit of Study
	Jurisdiction Boundary

NOTES TO USERS

For information and questions about this Flood Insurance Rate Map (FIRM), available products associated with this FIRM, including historic versions, the current map date for each FIRM panel, how to order products, or the National Flood Insurance Program (NFIP) in general, please call the FEMA Map Information eXchange at 1-877-FEMA-MAP (1-877-336-2627) or visit the FEMA Flood Map Service Center website at msc.fema.gov. Available products may include previously issued Letters of Map Change, a Flood Insurance Study Report, and/or digital versions of this map. Many of these products can be ordered or obtained directly from the website.

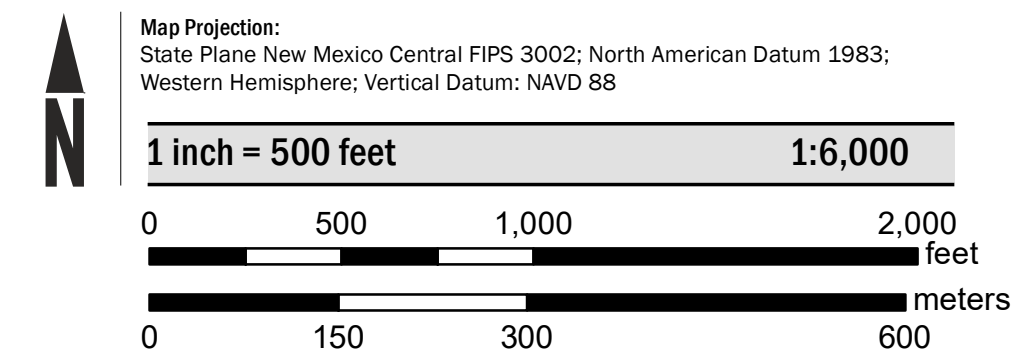
Communities annexing land on adjacent FIRM panels must obtain a current copy of the adjacent panel as well as the current FIRM Index. These may be ordered directly from the Flood Map Service Center at the number listed above.

For community and countywide map dates refer to the Flood Insurance Study Report for this jurisdiction.

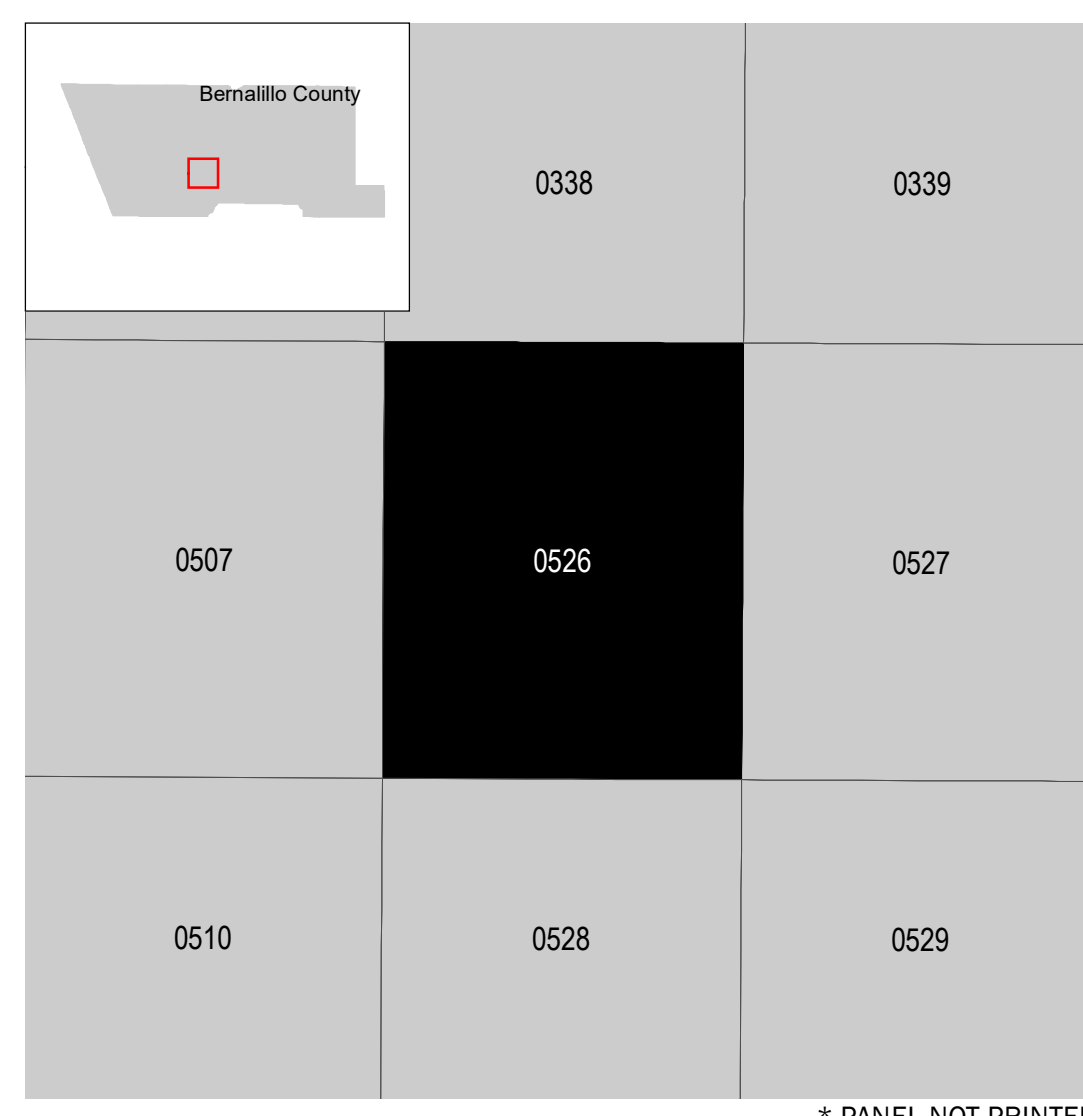
To determine if flood insurance is available in this community, contact your insurance agent or call the National Flood Insurance Program at 1-800-638-6620.

NOTE: BASEMAP IMAGERY DATED 2022 WAS OBTAINED FROM NAIP.

SCALE



PANEL LOCATOR



FEMA
National Flood Insurance Program

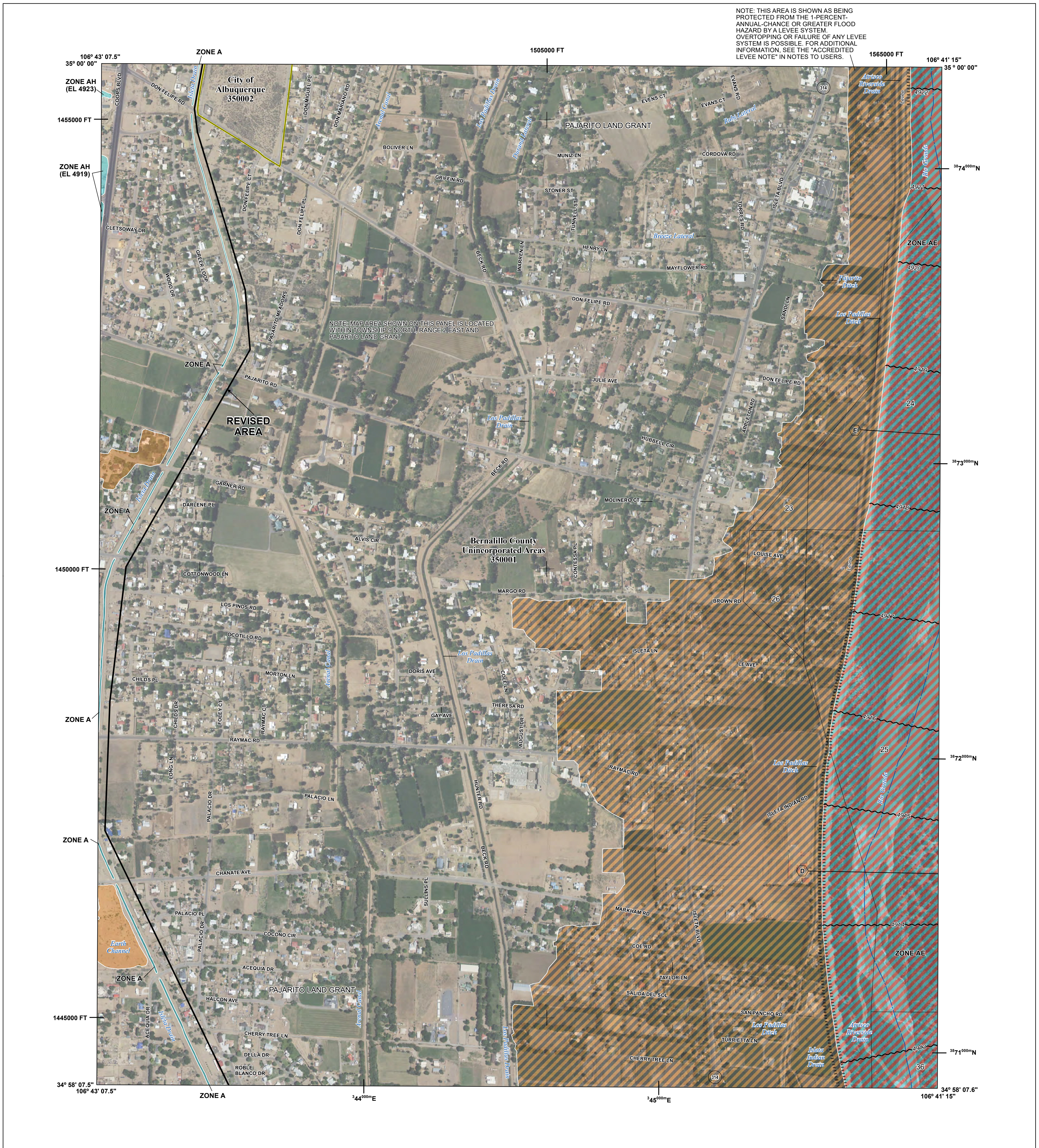
NATIONAL FLOOD INSURANCE PROGRAM
FLOOD INSURANCE RATE MAP

BERNALILLO COUNTY, NEW MEXICO
 and Incorporated Areas
 PANEL 526 OF 825

Panel Contains:
 COMMUNITY NUMBER PANEL SUFFIX
 BERNALILLO COUNTY, UNINCORPORATED AREAS 350001 0526 H

REVISED TO REFLECT LOMR EFFECTIVE July 17, 2025

VERSION NUMBER 2.1.3.0
 MAP NUMBER 35001C0526H
 MAP REVISED AUGUST 16, 2012



FLOOD HAZARD INFORMATION

SEE FIS REPORT FOR DETAILED LEGEND AND INDEX MAP FOR FIRM PANEL LAYOUT
 THE INFORMATION DEPICTED ON THIS MAP AND SUPPORTING DOCUMENTATION ARE ALSO AVAILABLE IN DIGITAL FORMAT AT [HTTPS://MSC.FEMA.GOV](https://MSC.FEMA.GOV)

	Without Base Flood Elevation (BFE) Zone A, V, A99
	With BFE or Depth Zone AE, AO, AH, VE, AR
	Regulatory Floodway
	0.2% Annual Chance Flood Hazard, Areas of 1% annual chance flood with average depth less than one foot or with drainage areas of less than one square mile Zone X
	Future Conditions 1% Annual Chance Flood Hazard Zone X
	Area with Reduced Flood Risk due to Levee See Notes. Zone X
	Area with Flood Risk due to Levee Zone D
	NO SCREEN Area of Minimal Flood Hazard Zone X
	Area of Undetermined Flood Hazard Zone D
	Channel, Culvert, or Storm Sewer
	Levee, Dike, or Floodwall
	18.2 17.5 Cross Sections with 1% Annual Chance Water Surface Elevation
	Coastal Transect
	Coastal Transect Baseline
	Profile Baseline
	Hydrographic Feature
	Base Flood Elevation Line (BFE)
	Limit of Study
	Jurisdiction Boundary

NOTES TO USERS

For information and questions about this Flood Insurance Rate Map (FIRM), available products associated with this FIRM, including historic versions, the current map date for each FIRM panel, how to order products, or the National Flood Insurance Program (NFIP) in general, please call the FEMA Map Information eXchange at 1-877-FEMA-MAP (1-877-336-2627) or visit the FEMA Flood Map Service Center website at [msc.fema.gov](https://MSC.FEMA.GOV). Available products may include previously issued Letters of Map Change, a Flood Insurance Study Report, and/or digital versions of this map. Many of these products can be ordered or obtained directly from the website.

Communities annexing land on adjacent FIRM panels must obtain a current copy of the adjacent panel as well as the current FIRM Index. These may be ordered directly from the Flood Map Service Center at the number listed above.

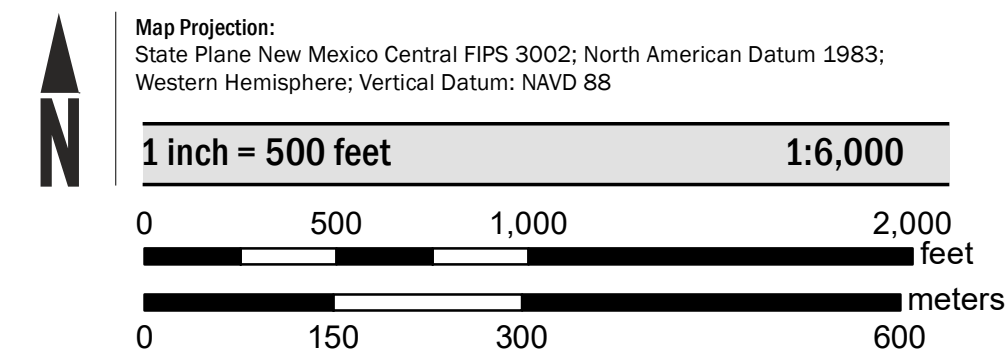
For community and countywide map dates refer to the Flood Insurance Study Report for this jurisdiction.

To determine if flood insurance is available in this community, contact your insurance agent or call the National Flood Insurance Program at 1-800-638-6620.

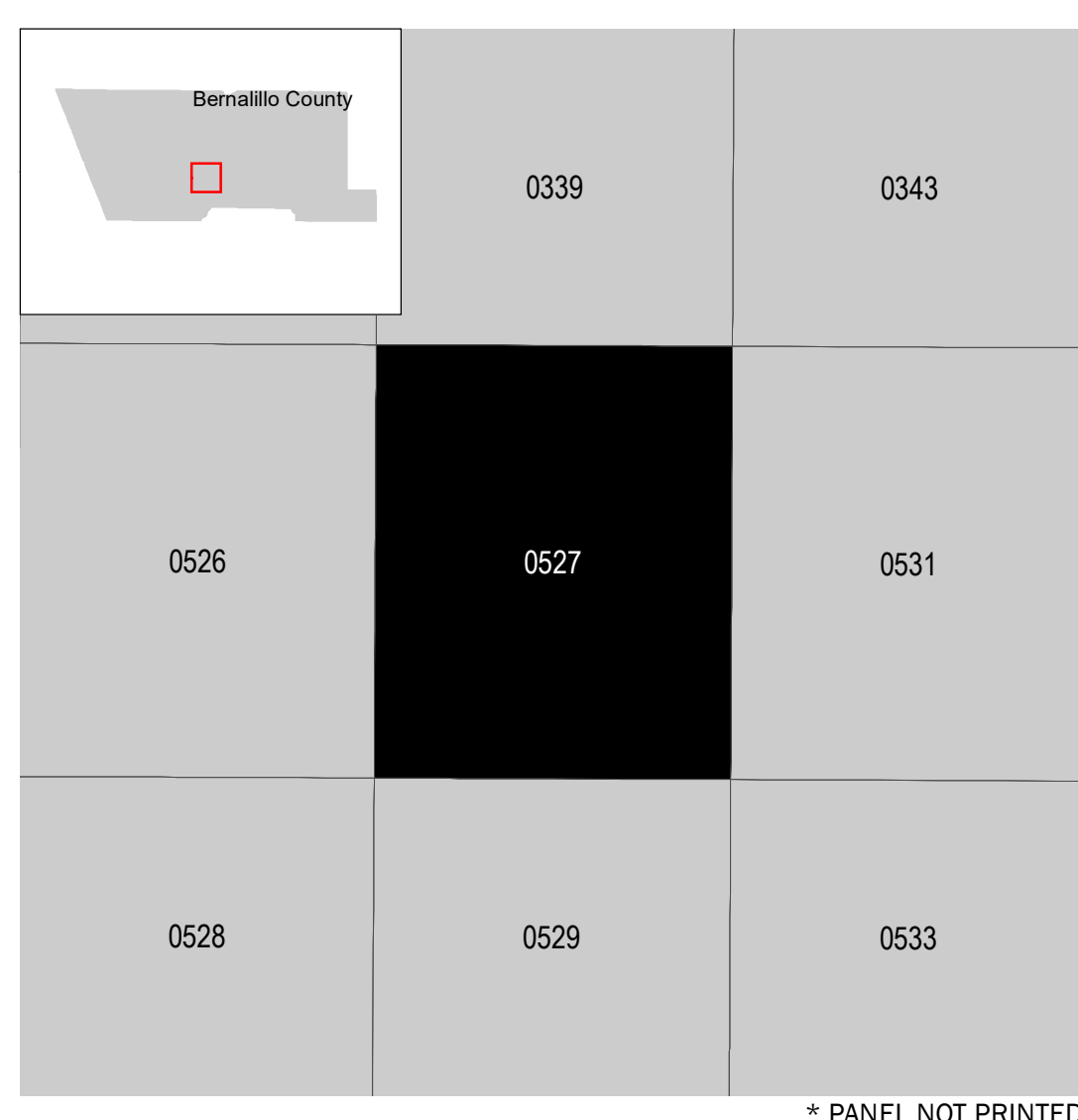
NOTE: BASEMAP IMAGERY DATED 2022 WAS OBTAINED FROM NAIP.

Accredited Levee Notes to Users: Check with your local community to obtain more information, such as the estimated level of protection provided (which may exceed the 1-percent-annual-chance level) and Emergency Action Plan, on the levee system(s) shown as providing protection for areas on this panel. To mitigate flood risk in residual risk areas, property owners and residents are encouraged to consider flood insurance and floodproofing or other protective measures. For more information on flood insurance, interested parties should visit the FEMA Website at <http://www.fema.gov/business/nfip/index.shtm>.

SCALE



PANEL LOCATOR



* PANEL NOT PRINTED

National Flood Insurance Program

NATIONAL FLOOD INSURANCE PROGRAM
 FLOOD INSURANCE RATE MAP

BERNALILLO COUNTY,
 NEW MEXICO
 and Incorporated Areas

PANEL 527 OF 825

FEMA

Panel Contains:

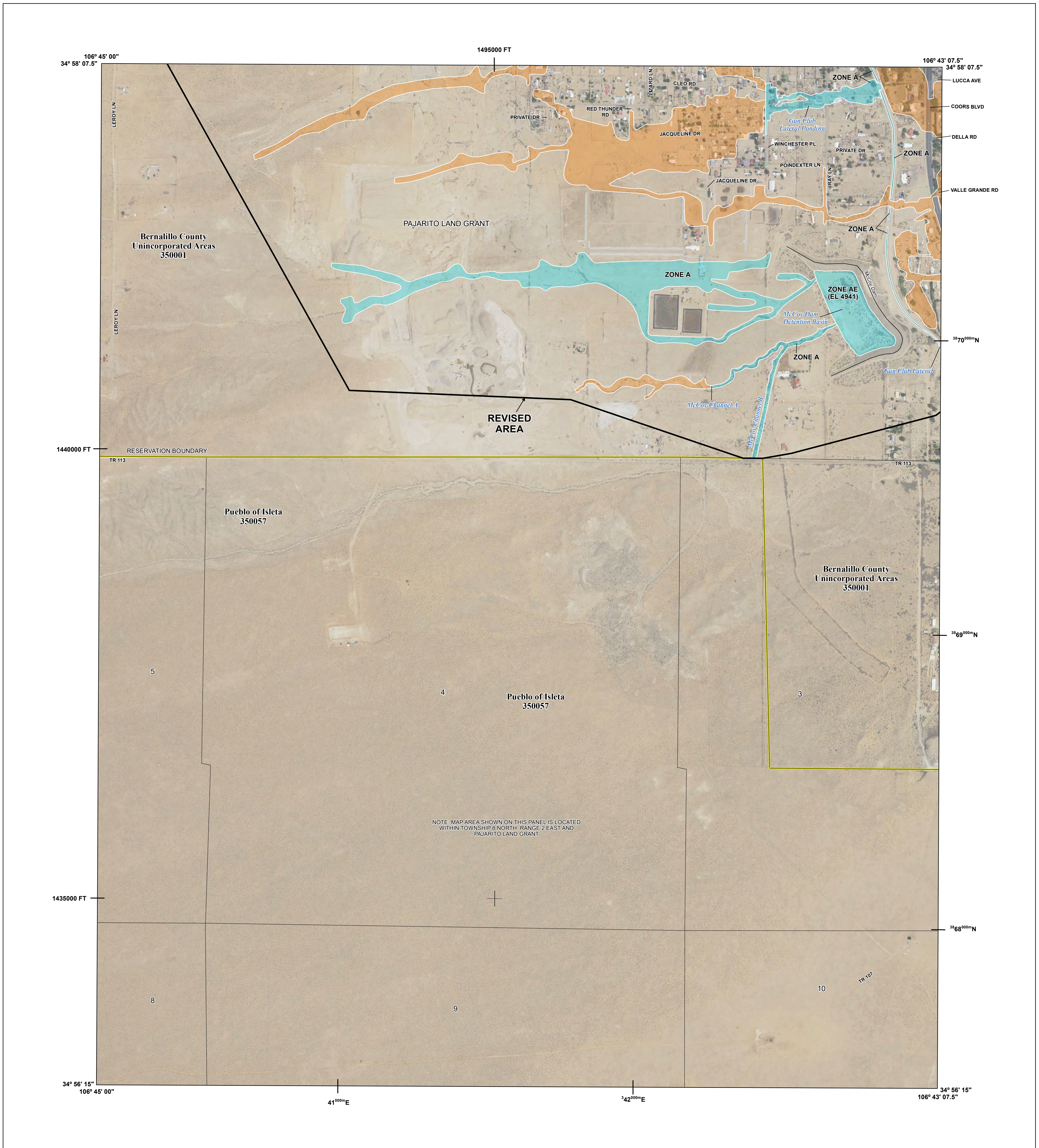
COMMUNITY	NUMBER	PANEL	SUFFIX
ALBUQUERQUE, CITY OF	350002	0527	H
BERNALILLO COUNTY, UNINCORPORATED AREAS	350001	0527	H

REVISED TO REFLECT LOMR EFFECTIVE: July 17, 2025

VERSION NUMBER
2.1.3.0

MAP NUMBER
35001C0527H

MAP REVISED
AUGUST 16, 2012



FLOOD HAZARD INFORMATION

SEE FIS REPORT FOR DETAILED LEGEND AND INDEX MAP FOR FIRM PANEL LAYOUT
THE INFORMATION DEPICTED ON THIS MAP AND SUPPORTING DOCUMENTATION ARE ALSO AVAILABLE IN DIGITAL FORMAT AT [HTTPS://MSC.FEMA.GOV](https://MSC.FEMA.GOV)

SPECIAL FLOOD HAZARD AREAS		Without Base Flood Elevation (BFE) Zone A, V, A99
		With BFE or Depth Zone AE, AO, AH, VE, AR
OTHER AREAS OF FLOOD HAZARD		Regulatory Floodway
		0.2% Annual Chance Flood Hazard, Areas of 1% annual chance flood with average depth less than one foot or with drainage areas of less than one square mile Zone X
		Future Conditions 1% Annual Chance Flood Hazard Zone X
		Area with Reduced Flood Risk due to Levee See Notes. Zone X
OTHER AREAS		Area with Flood Risk due to Levee Zone D
		Area of Minimal Flood Hazard Zone X
GENERAL STRUCTURES		Area of Undetermined Flood Hazard Zone D
		Channel, Culvert, or Storm Sewer
OTHER FEATURES		Levee, Dike, or Floodwall
		Cross Sections with 1% Annual Chance Water Surface Elevation
OTHER FEATURES		Coastal Transect
		Coastal Transect Baseline
		Profile Baseline
		Hydrographic Feature
		Base Flood Elevation Line (BFE)
		Limit of Study
		Jurisdiction Boundary

NOTES TO USERS

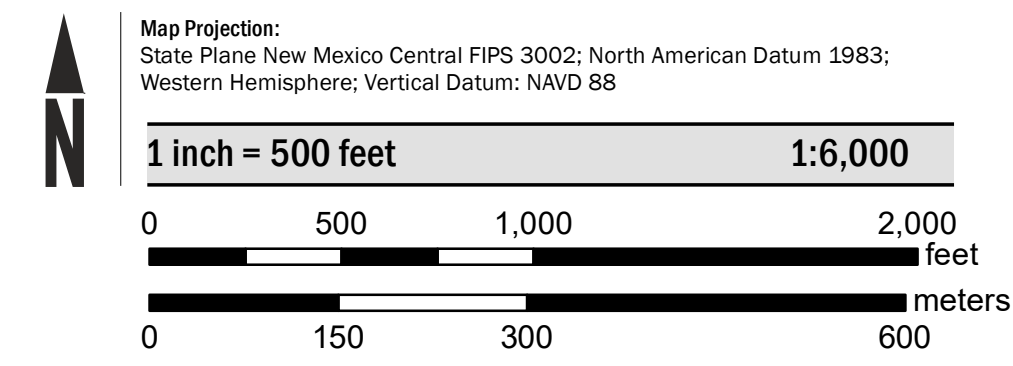
For information and questions about this Flood Insurance Rate Map (FIRM), available products associated with this FIRM, including historic versions, the current map date for each FIRM panel, how to order products, or the National Flood Insurance Program (NFIP) in general, please call the FEMA Map Information eXchange at 1-877-FEMA-MAP (1-877-336-2627) or visit the FEMA Flood Map Service Center website at msc.fema.gov. Available products may include previously issued Letters of Map Change, a Flood Insurance Study Report, and/or digital versions of this map. Many of these products can be ordered or obtained directly from the website.

Communities annexing land on adjacent FIRM panels must obtain a current copy of the adjacent panel as well as the current FIRM Index. These may be ordered directly from the Flood Map Service Center at the number listed above.

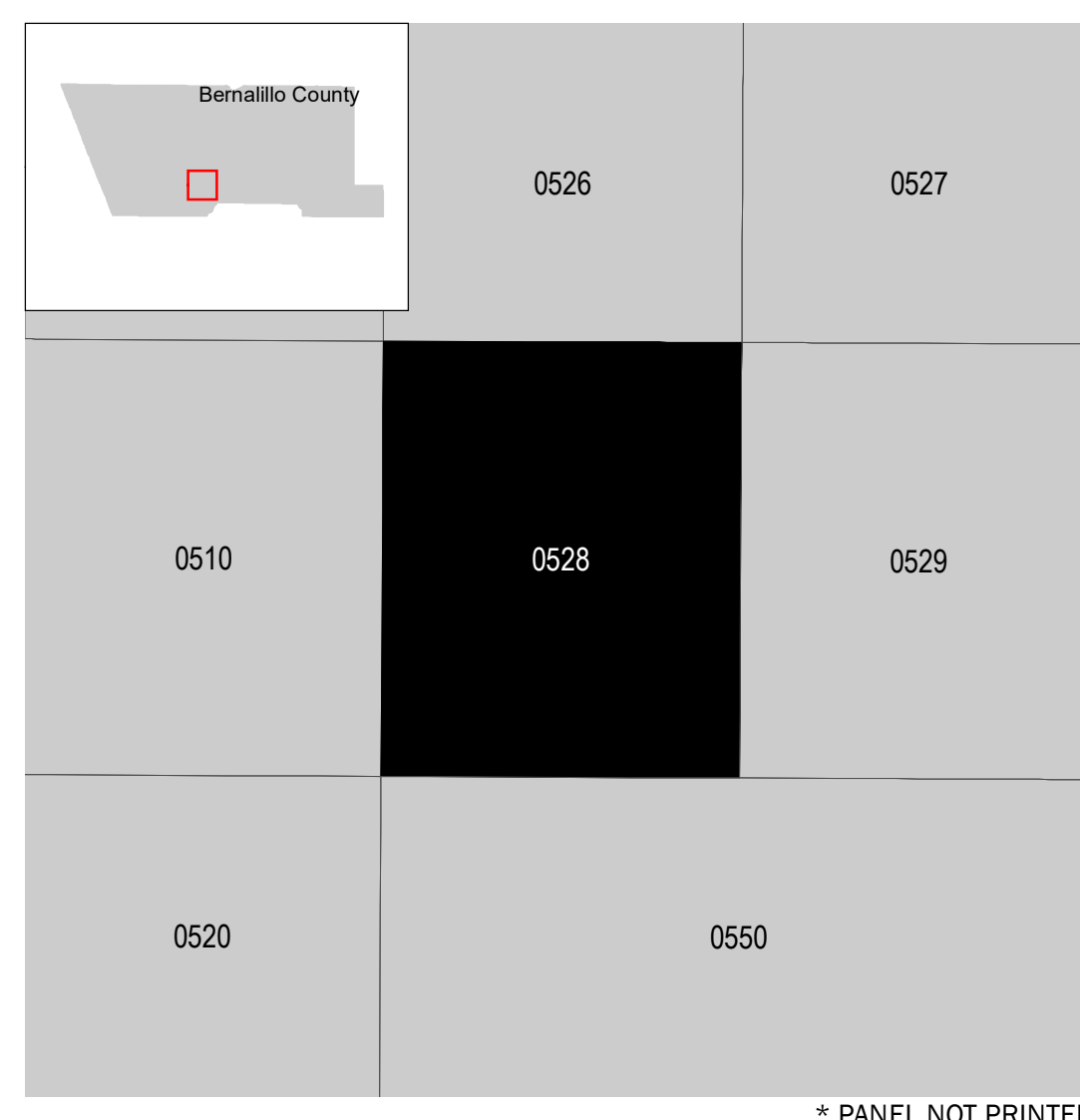
For community and countywide map dates refer to the Flood Insurance Study Report for this jurisdiction. To determine if flood insurance is available in this community, contact your insurance agent or call the National Flood Insurance Program at 1-800-638-6620.

NOTE: BASEMAP IMAGERY DATED 2022 WAS OBTAINED FROM NAIP.

SCALE



PANEL LOCATOR



* PANEL NOT PRINTED

National Flood Insurance Program

NATIONAL FLOOD INSURANCE PROGRAM
FLOOD INSURANCE RATE MAP

BERNALILLO COUNTY, NEW MEXICO
 and Incorporated Areas

PANEL 528 OF 825

Panel Contains:

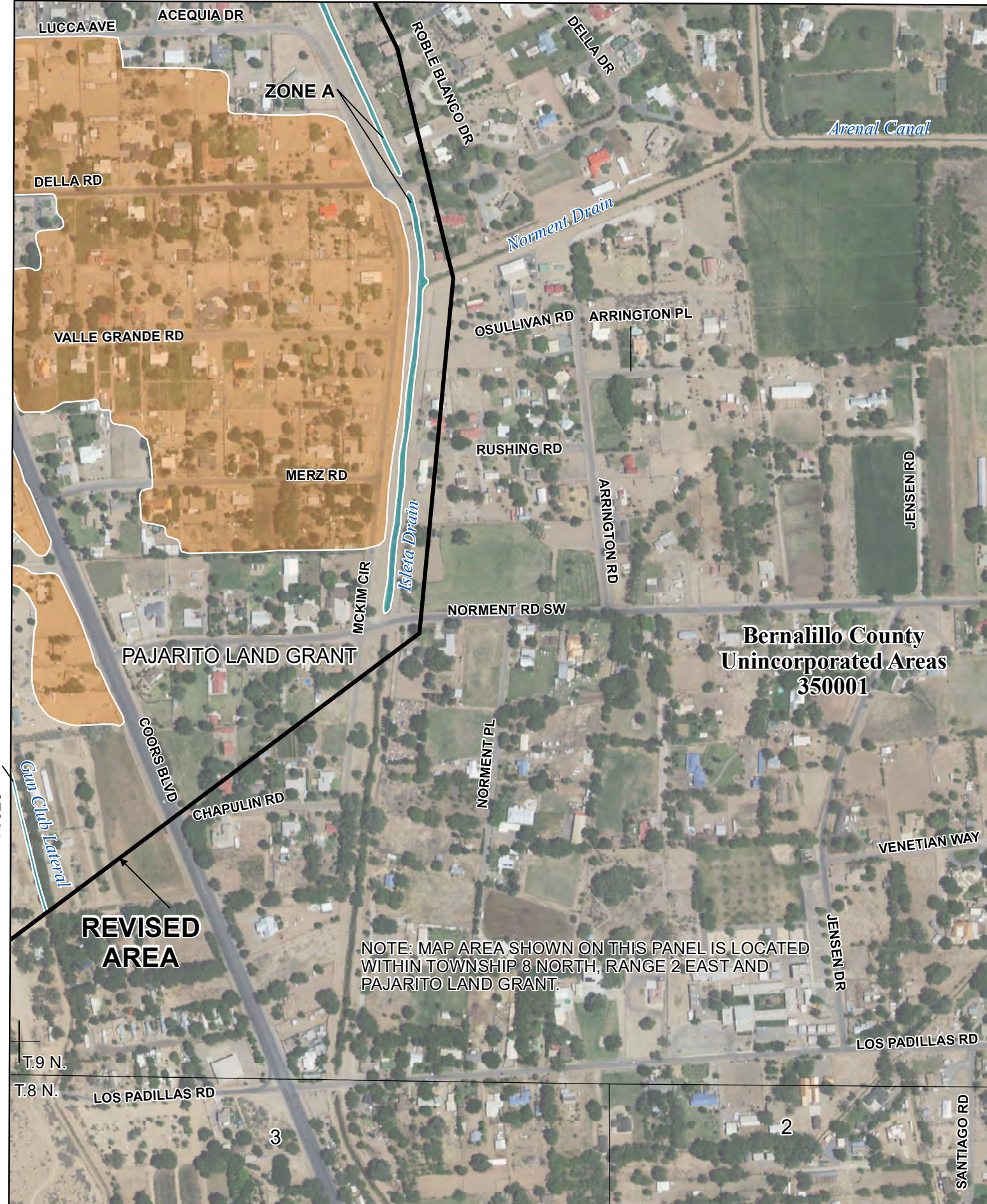
COMMUNITY	NUMBER	PANEL	SUFFIX
BERNALILLO COUNTY, UNINCORPORATED AREAS	350001	0528	H
ISLETA, PUEBLO OF	350057	0528	H

REVISED TO REFLECT LOMR EFFECTIVE: July 17, 2025

VERSION NUMBER
2.1.3.0
MAP NUMBER
35001C0528H
MAP REVISED
AUGUST 16, 2012

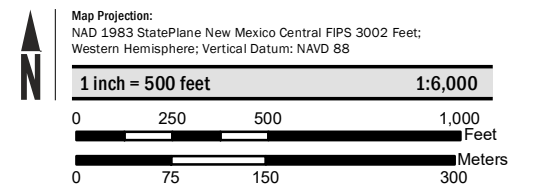
106° 43' 07.5"
34° 58' 07.5"

JOINS PANEL 0527



SPECIAL FLOOD HAZARD AREAS	
	Without Base Flood Elevation (BFE) <i>Zone A, V, A99</i>
	With BFE or Depth <i>Zone AE, AO, AH, VE, AR</i>
	Regulatory Floodway
OTHER AREAS OF FLOOD HAZARD	
	0.2% Annual Chance Flood Hazard, Areas of 1% annual chance flood with average depth less than one foot or with drainage areas of less than one square mile <i>Zone X</i>
	Future Conditions 1% Annual Chance Flood Hazard <i>Zone X</i>
	Area with Reduced Flood Risk due to Levee See Notes. <i>Zone X</i>

SCALE NOTE: BASEMAP IMAGERY DATED 2022 WAS OBTAINED FROM NAIP.



FEMA NATIONAL FLOOD INSURANCE PROGRAM
FLOOD INSURANCE RATE MAP
BERNALILLO COUNTY, NEW MEXICO
and Incorporated Areas
PANEL 529 OF 825

Panel Contains:

COMMUNITY	NUMBER	PANEL	SUFFIX
BERNALILLO COUNTY, UNINCORPORATED AREAS	350001	0529	H
ISLETA, PUEBLO OF	350057	0529	H

REVISED TO REFLECT LOMR EFFECTIVE: July 17, 2025

VERSION NUMBER
2.1.3.0
MAP NUMBER
35001C0529H
MAP REVISED
AUGUST 16, 2012

JOINS PANEL 0528

REVISED AREA

NOTE: MAP AREA SHOWN ON THIS PANEL IS LOCATED WITHIN TOWNSHIP 8 NORTH, RANGE 2 EAST AND PAJARITO LAND GRANT.

Bernalillo County
Unincorporated Areas
350001